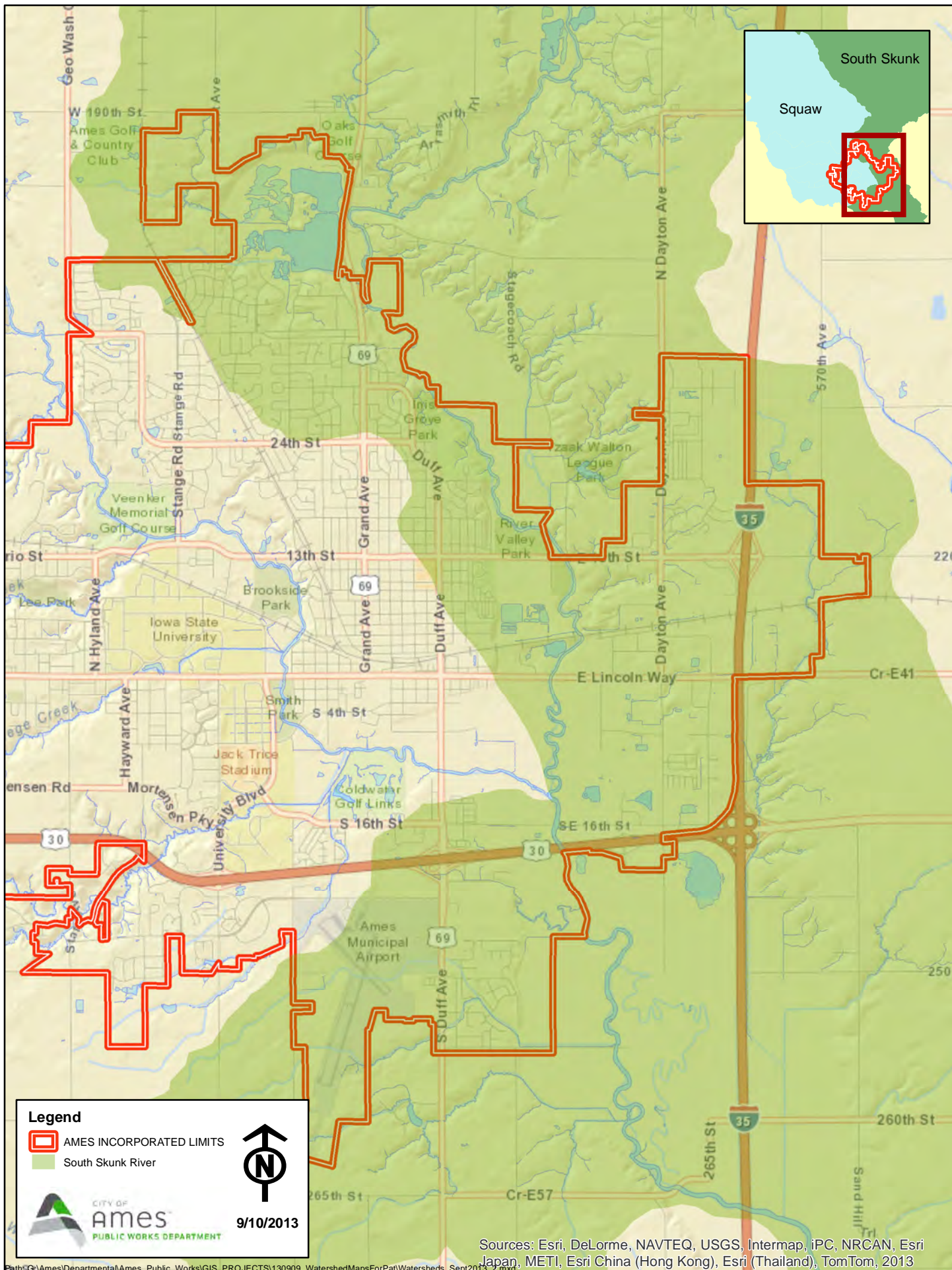


# South Skunk River Watershed



**Legend**

- AMES INCORPORATED LIMITS
- South Skunk River

**9/10/2013**

CITY OF Ames  
PUBLIC WORKS DEPARTMENT

Sources: Esri, DeLorme, NAVTEQ, USGS, Intermap, iPC, NRCAN, Esri Japan, METI, Esri China (Hong Kong), Esri (Thailand), TomTom, 2013