



CITY OF AMES

**AMES
CITIZENS**

**CONFERENCE
BOARD**

City Assessor

HOSPITAL BOARD

**Mary Greeley
Medical Center**

**MAYOR &
CITY COUNCIL**

City Manager

Legal

TRANSIT BOARD

CyRide

**LIBRARY BOARD OF
TRUSTEES**

Library

**Assistant
City Manager**

**Assistant
City Manager**

**Fleet
Services**

**Parks &
Recreation**

**Water and
Pollution
Control**

City Clerk

**Communications
and Outreach**

Electric

Finance

Fire

**Human
Resources**

Police

**Planning
& Housing**

Public Works

Administration
Maintenance Program
Replacement Program
Facilities

Administration
Ames/ISU Ice Arena
Aquatics
Cemetery
Community Center
Homewood Golf Course
Parks Maintenance
Forestry

Administration
Water Plant
Water Pollution Control Plant
Water Meter
Laboratory Services

Print Shop

Administration
Distribution
Engineering
Tech Services
Production
Energy Markets

Administration
Accounting
Customer Services
Meter Reader
Information Services
Purchasing

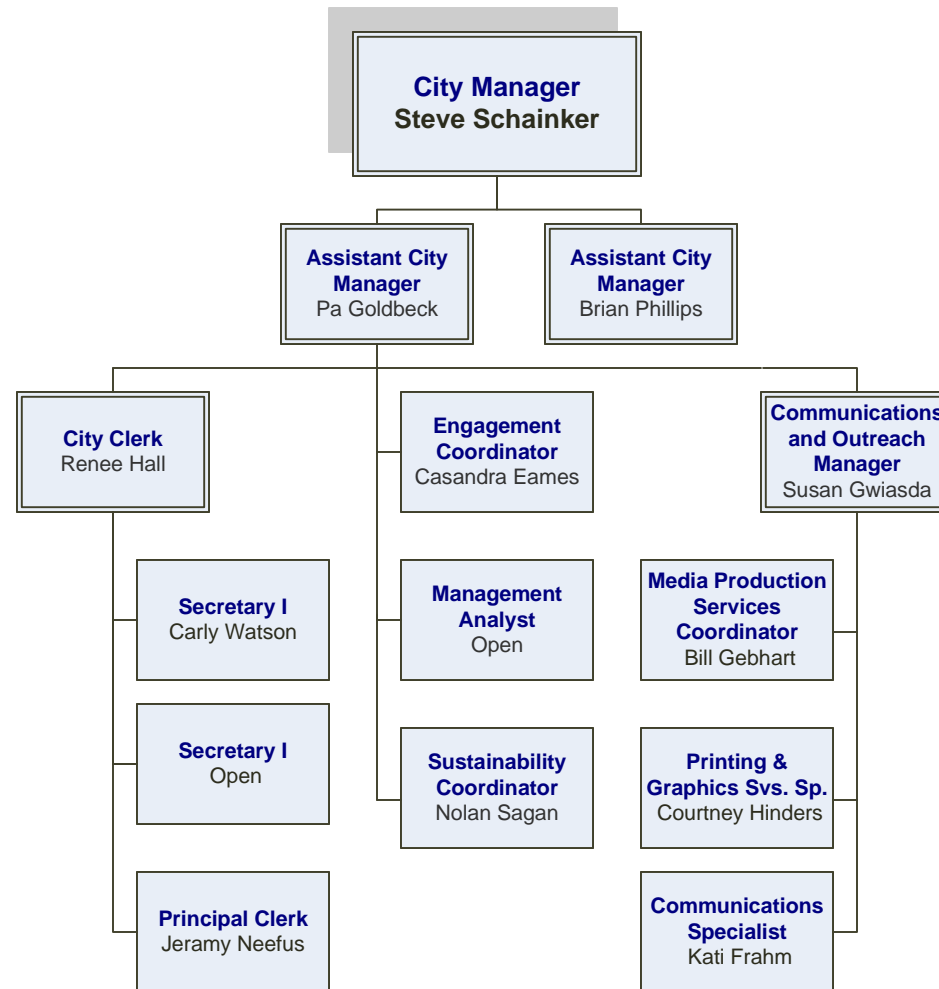
Fire Station #1
Fire Station #2
Fire Station #3
Administration
Inspections
Prevention
Sanitation
Support Services

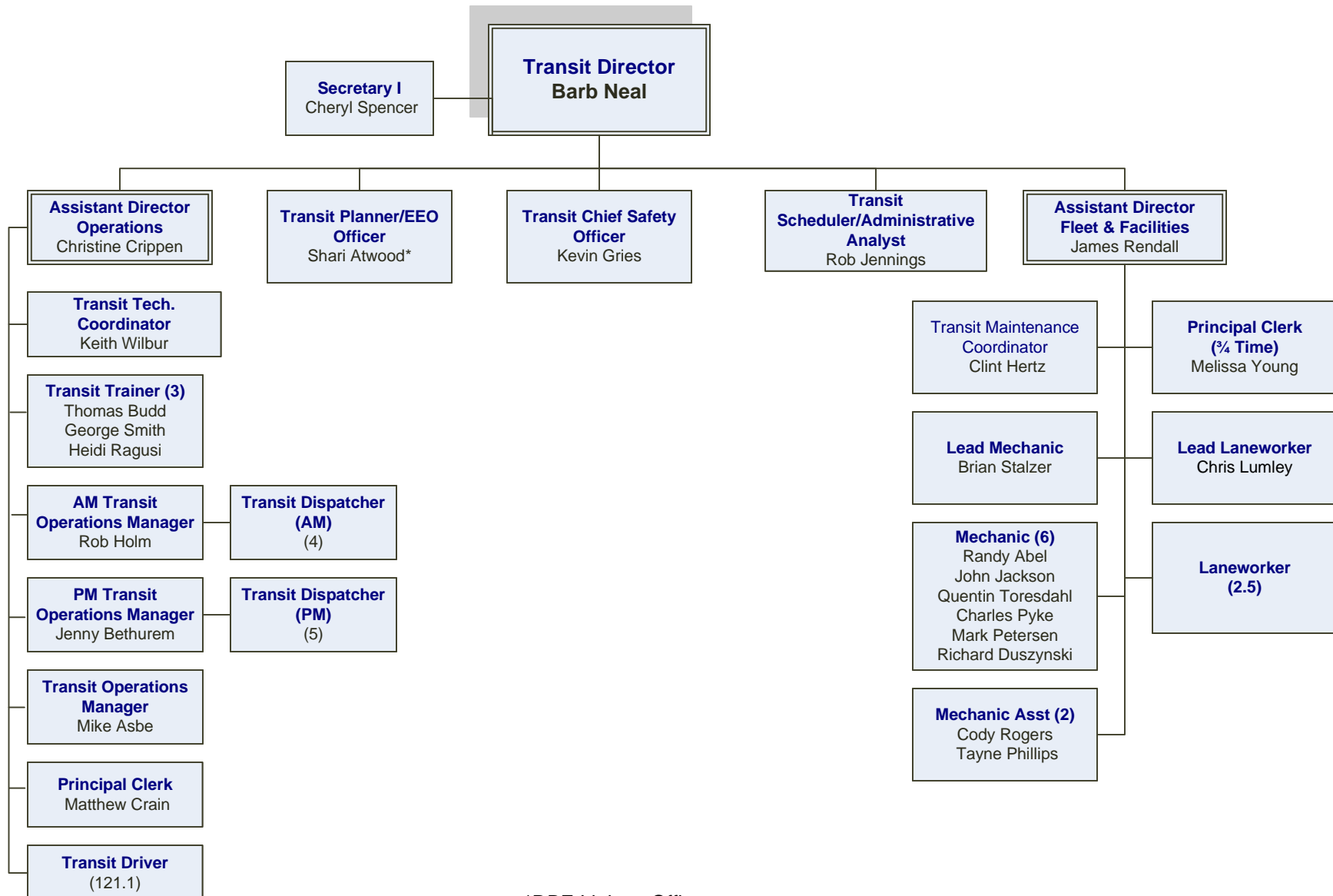
Health Promotion
Risk Management

Patrol
Criminal Investigation
Support Services
Animal Control & Shelter

Housing
Planning

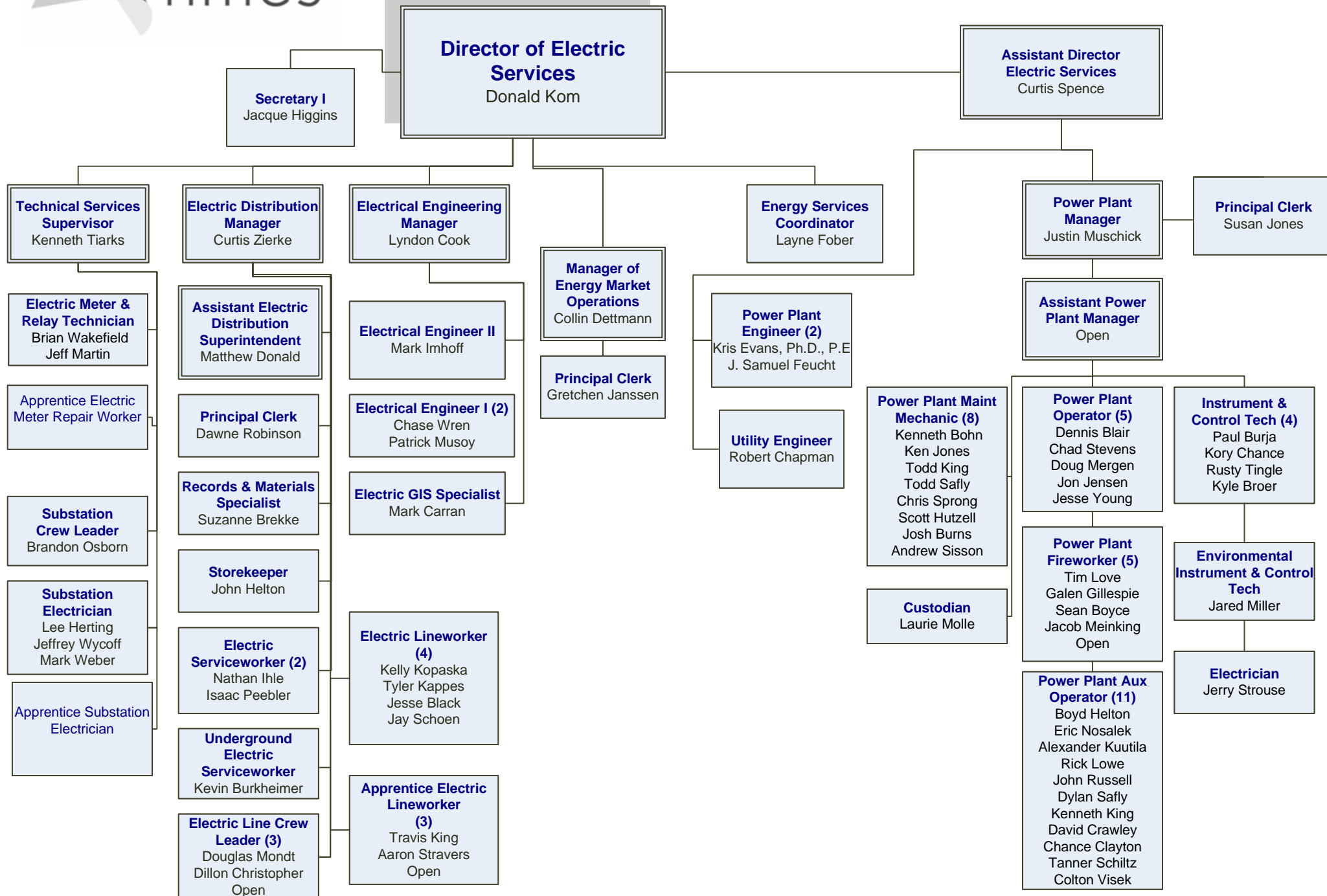
Administration
Airport
Engineering
Parking Meter Repair
Resource Recovery
Streets
Traffic
Utility Maintenance

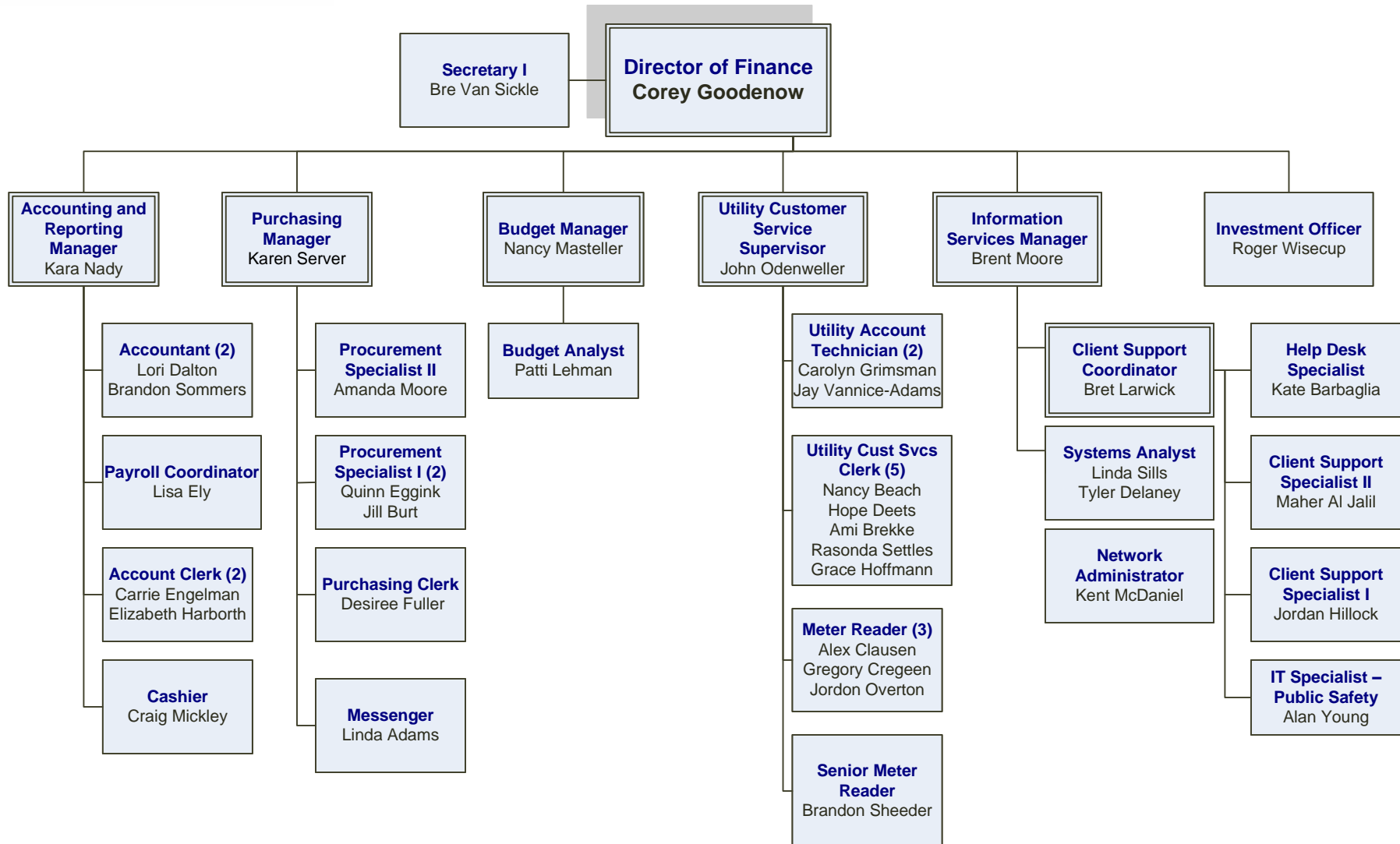


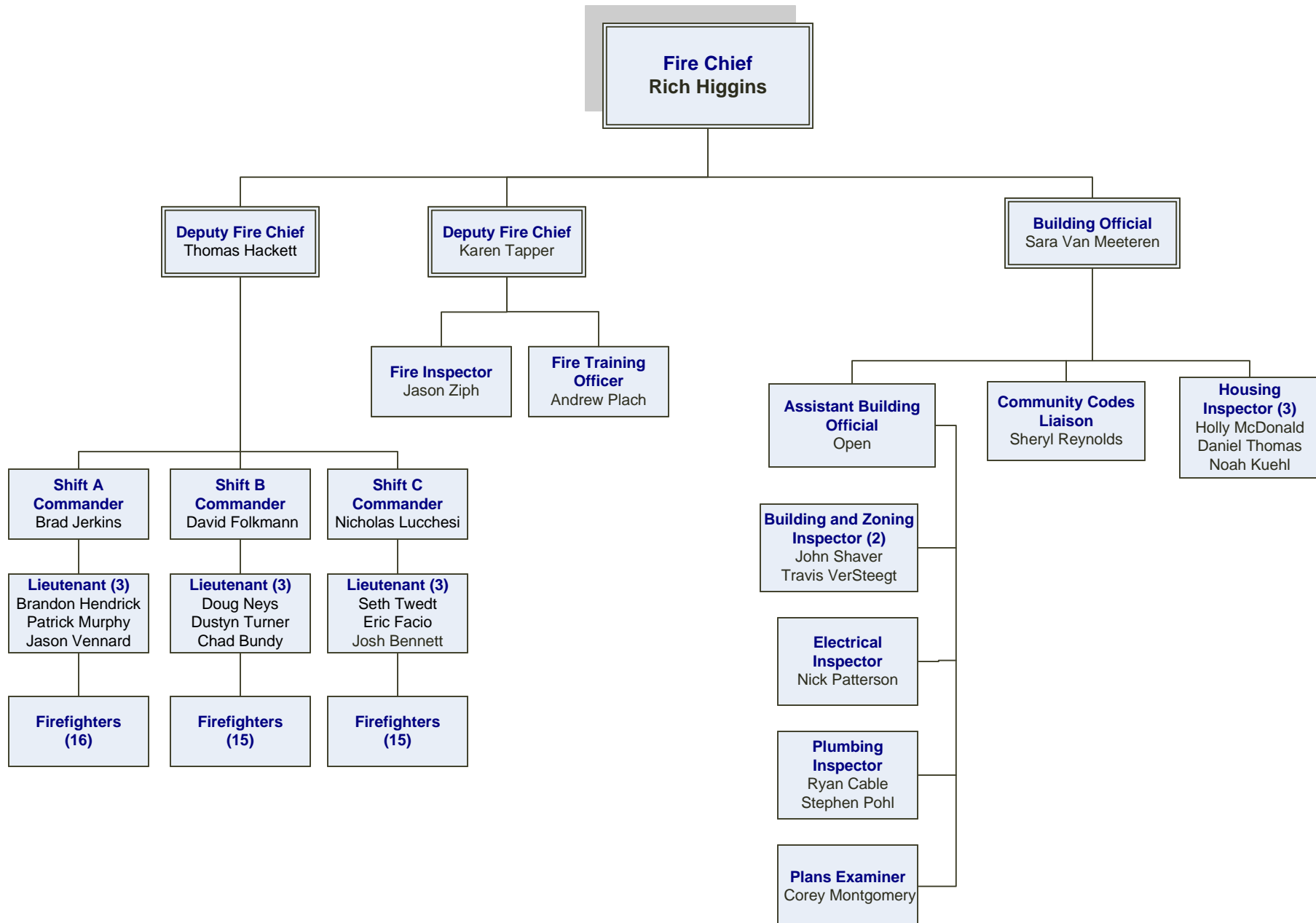


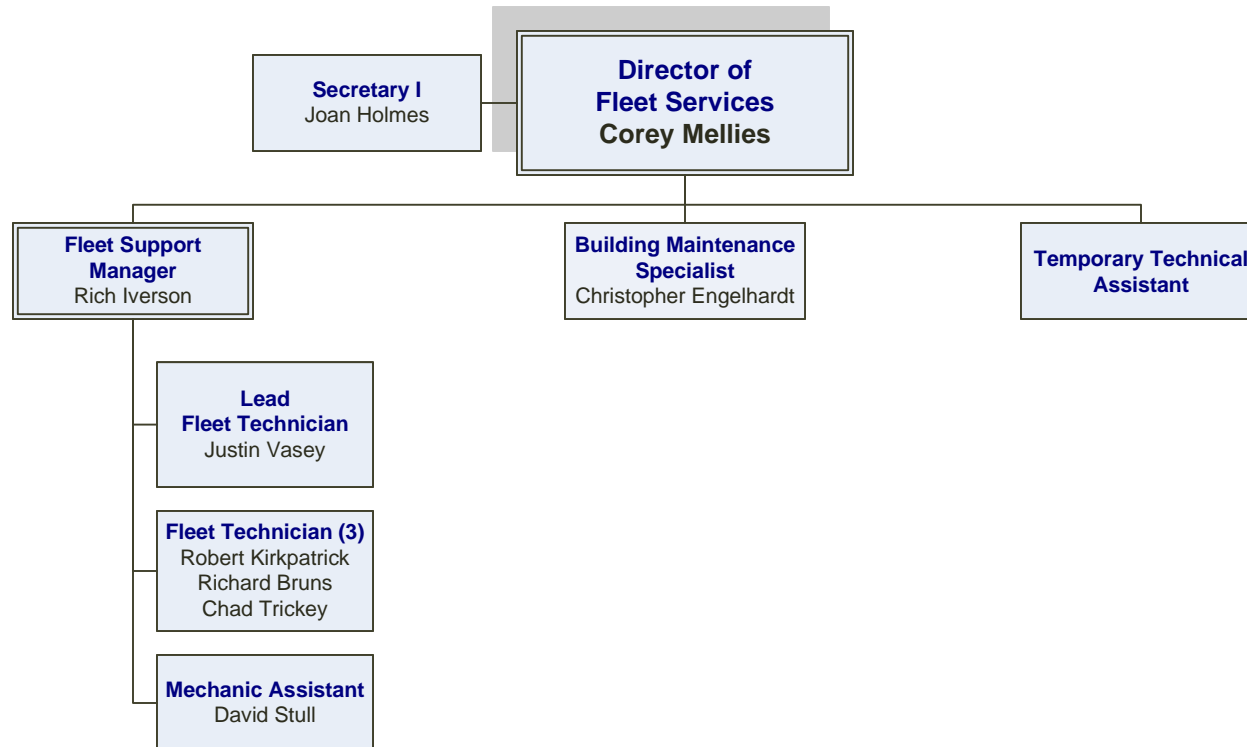
*DBE Liaison Officer

ELECTRIC SERVICES











HUMAN RESOURCES

**Director of
Human Resources**
Bethany Jorgenson

Risk Manager
Bill Walton

**Health Promotion
Coordinator**
Kacie Schumann

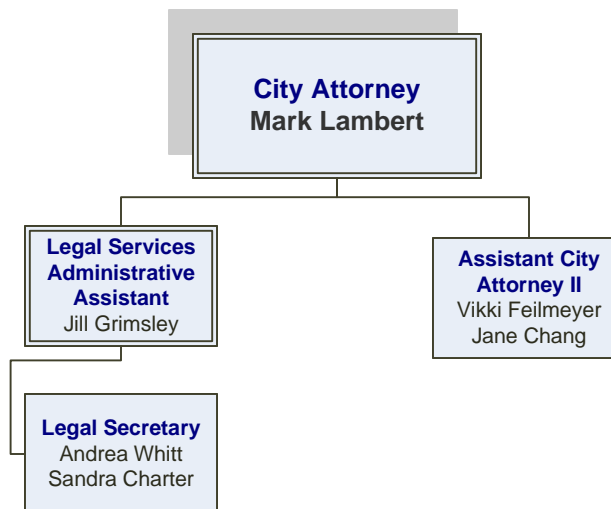
**Human Resources
Officer II**
Krista Hammer

**Human Resources
Officer I**
Lindsay Moeller
Open

**Human Resources
Specialist**
Samantha Perry

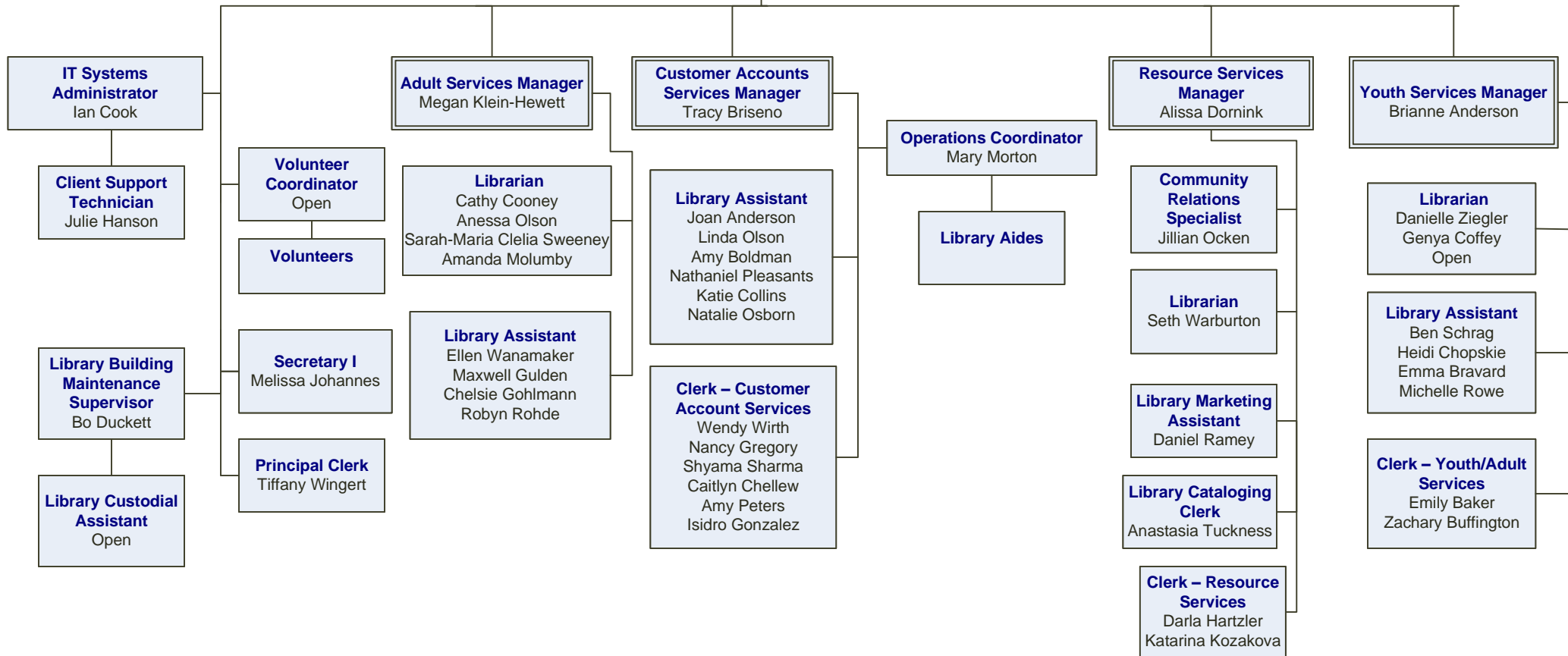
**Human Resources
Secretary I**
Vicki Hillock

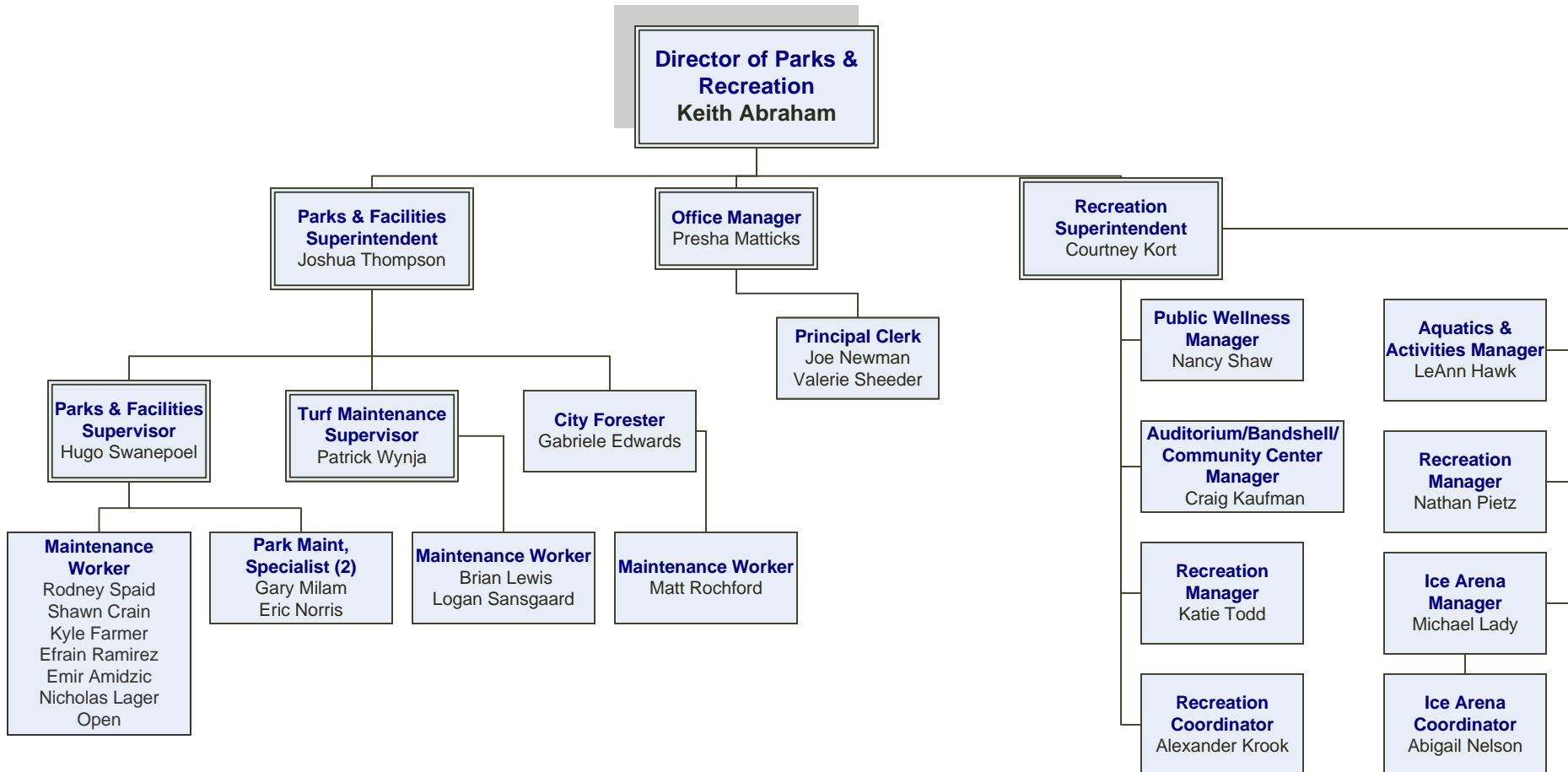
**Human Resources
Assistant**
Lyle Davenport



BOARD OF TRUSTEES

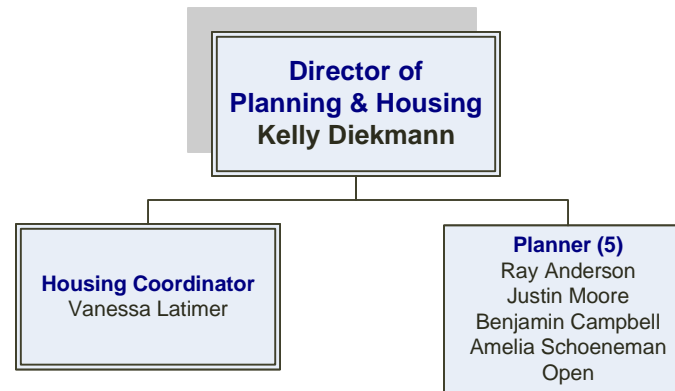
Library Director
Sheila Schofer

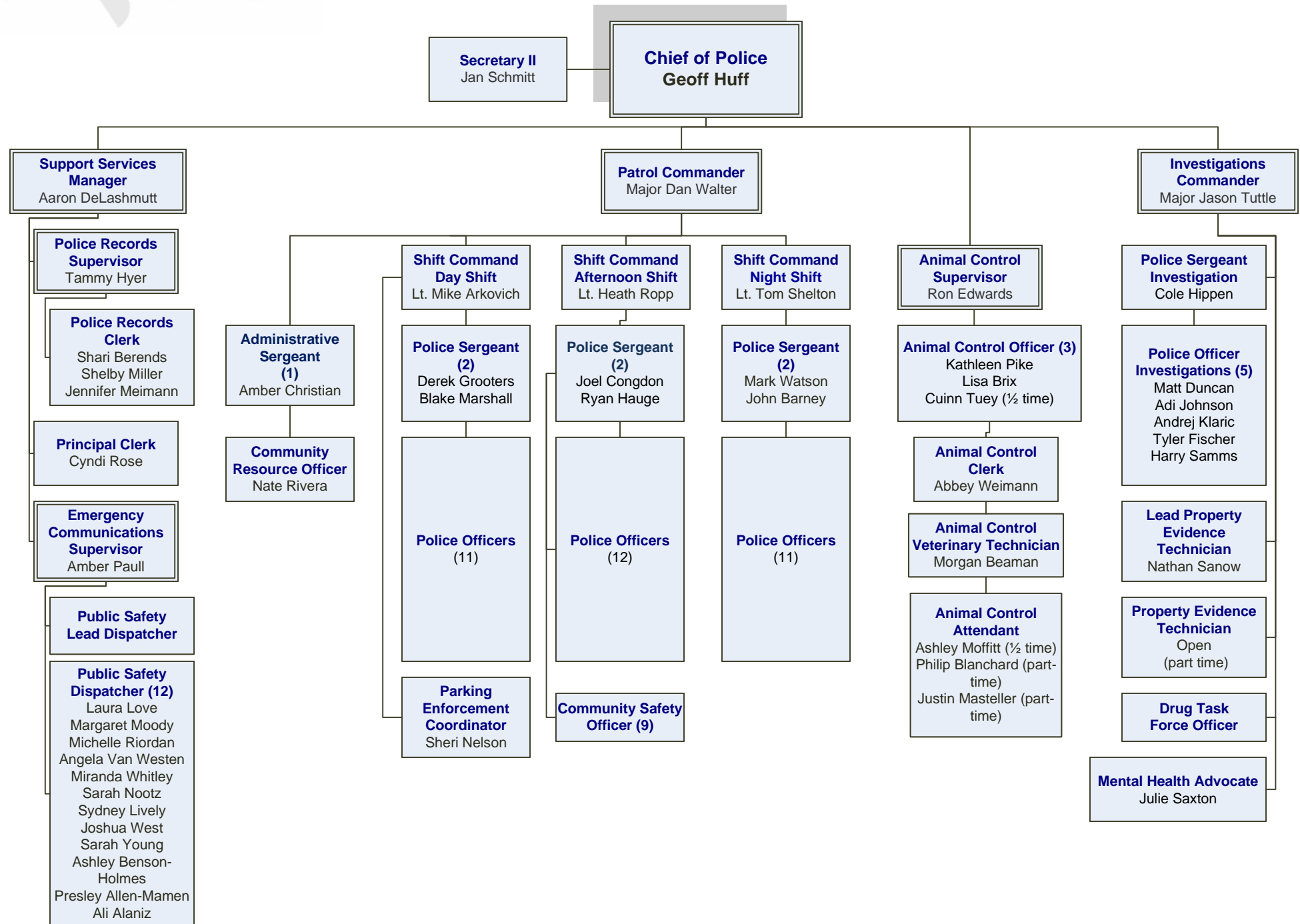


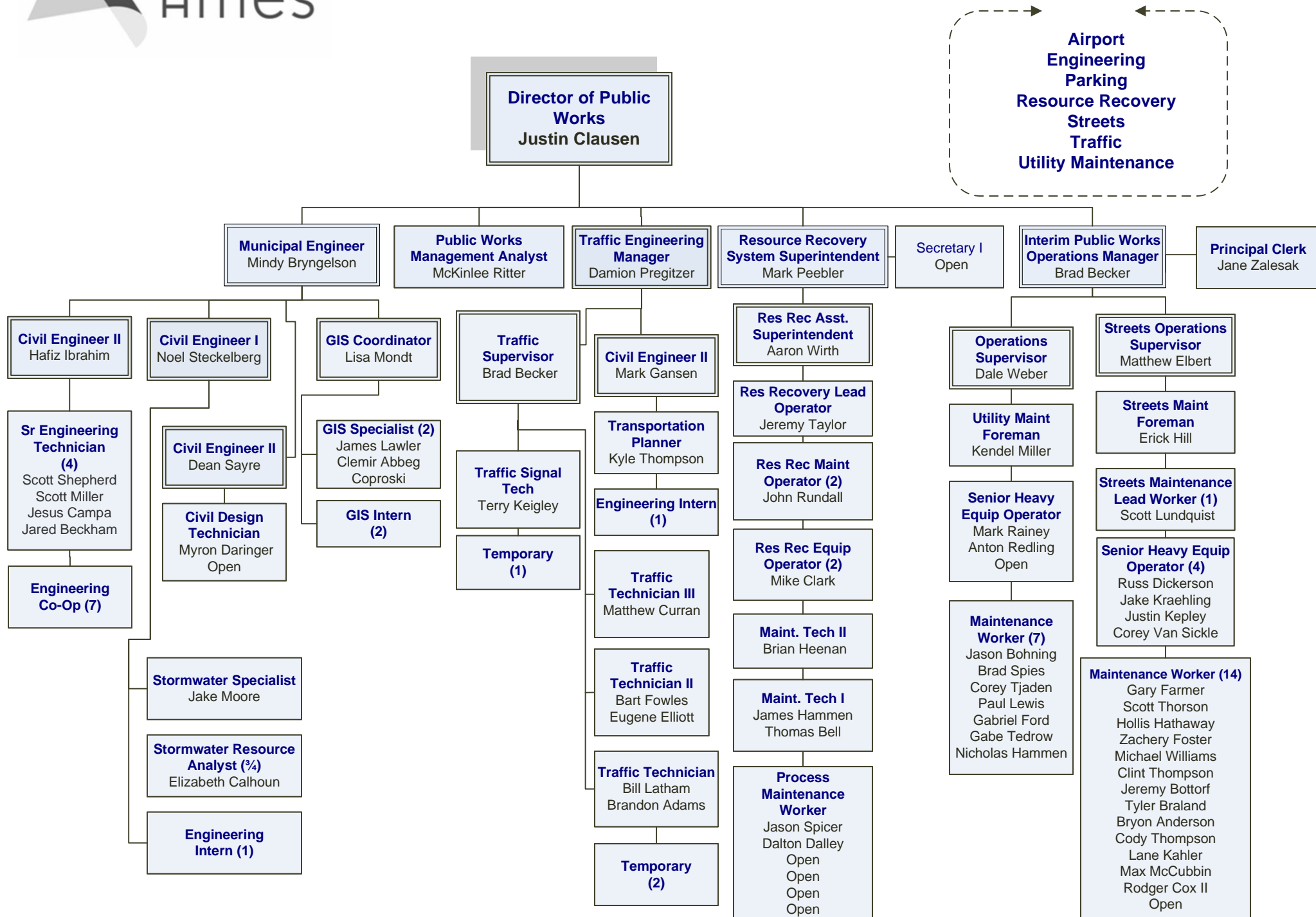




PLANNING & HOUSING









SHARED SUPPORT STAFF



**Administrative Services
Coordinator**
Ashley Gibson

Principal Clerk (4)

Eileen Carter
Natalie Rekemeyer
Laura Colebrooke
Brittany Clayton

WATER & POLLUTION CONTROL

