

Ioway Creek at Brookside Notice of Construction

Starting Date: Monday, June 16, 2025

Phase 1 construction is installation of instream rock features in two sections of the creek: between 13th Street and the north pedestrian bridge and between the south pedestrian bridge and 6th Street. This phase is expected to take one month.

Phase 2 construction is grading of the streambanks below the north pedestrian bridge. This phase is expected to take two months.

Phase 3 is construction of the east slope and the creek realignment between the pedestrian bridges. This phase is expected to take three months.

The timing of the phasing may overlap as needed to manage the movement of on-site material from one area to another.

Completion of the project is planned for December 2025.

Trail Closures:

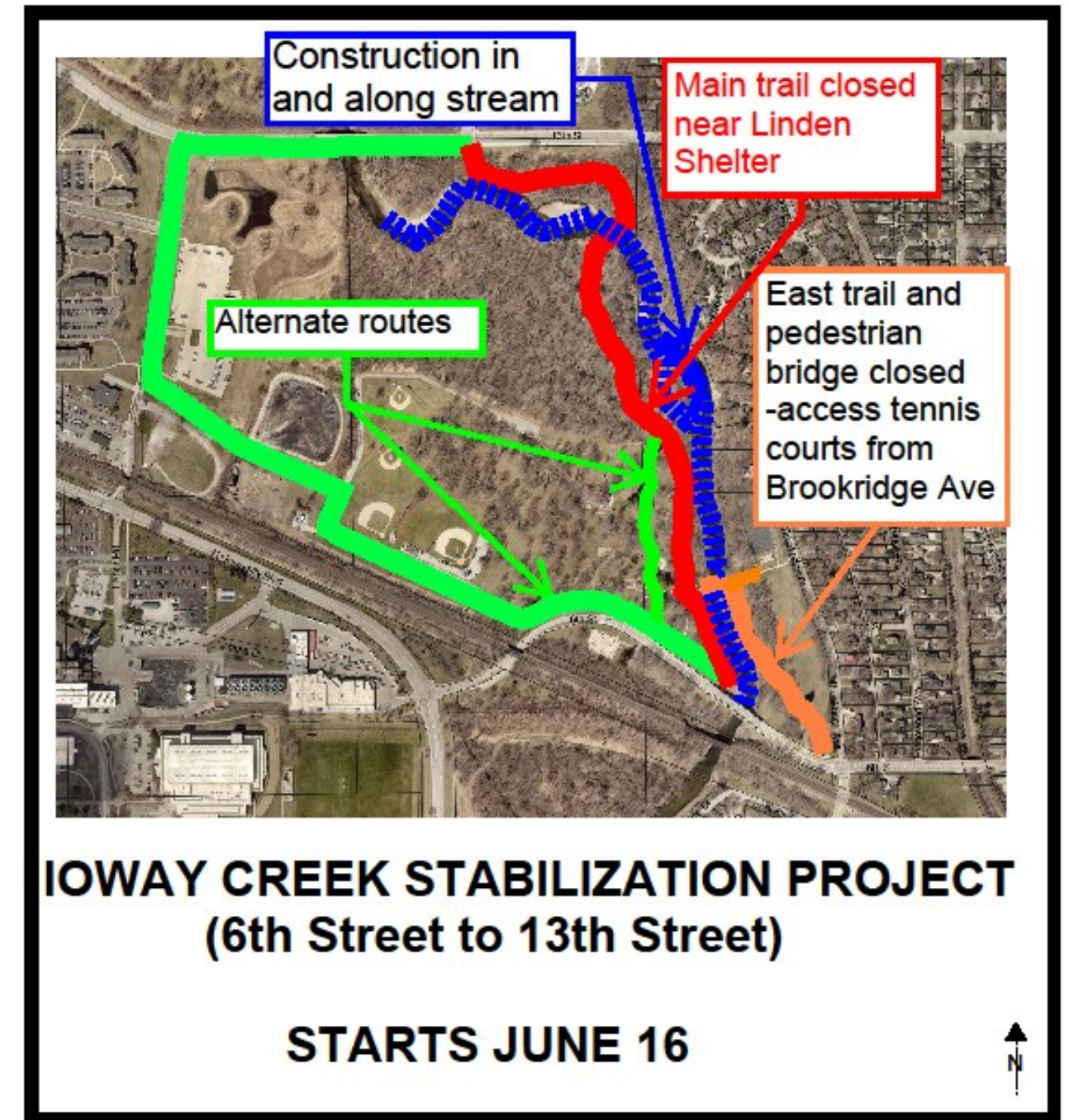
The east trail and the lower section of sidewalk from Brookridge Avenue to the south bridge will be closed for the duration of the project. Access to the tennis courts will be available from Brookridge Avenue.

The north-south trail at the Linden shelter will be closed for the duration of the project. The sidewalk to the west of the shelter is an alternate route. (See map)

The north pedestrian bridge and the entire north-south trail will be closed during construction on the instream features between the north pedestrian bridge and 13th Street. Trail users are encouraged to find an alternate route along south and west to Haber Road and north to 13th Street. (See route in green on map).

The shelters, parking lots, ballfields in the park will remain open to the public. Please be advised that there may be noise associated with the nearby construction activities in proximity to shelters and trails. Thank you for understanding and patience.

Project Details: The City of Ames has contracted with Iowa Earth Works for the stabilization of the Ioway Creek in Brookside. The project includes in-stream rock features, relocation of approximately 500 feet of the creek, streambank stabilization, vegetation establishment, and storm sewer extension.



**Public Works Department
Engineering Division**

515 Clark Ave.
Ames, Iowa 50010

515-239-5160

Ames Public Works

Contact Information

Project Engineer
Liz
515-239-5575

Project Inspector
Jared
515-203-0795

SWPPP
Jake
515-239-5287

Contractor
Iowa Earth Works
Project Manager
Joe
515-290-3438

