

United States Department of the Interior
National Park Service

National Register of Historic Places
Registration Form

This form is for use in nominating or requesting determinations for individual properties and districts. See instructions in *How to Complete the National Register of Historic Places Registration Form* (National Register Bulletin 16A). Complete each item by marking "x" on the appropriate line or by entering the information requested. If an item does not apply to the property being documented, enter "N/A" for "not applicable." For functions, architectural classification, materials, and areas of significance, enter only categories and subcategories from the instructions. Place additional entries and narrative items on continuation sheets (NPS Form 10-900a). Use a typewriter, word processor, or computer, to complete all items.

1. Name of Property

historic name BANDSHELL PARK HISTORIC DISTRICT
other names/site number City Park; City Park and Music Pavilion; Band Shell Park

2. Location

street & number Between Duff Ave., E. 5th St., E. 6th St., & Carroll Ave. N/A not for publication
city or town Ames N/A vicinity
state Iowa code IA county Story code 169 zip code 50010

3. State/Federal Agency Certification

As the designated authority under the National Historic Preservation Act, as amended, I hereby certify that this ☒ nomination
_ request for determination of eligibility) meets the documentation standards for registering properties in the National Register of
Historic Places and meets the procedural and professional requirements set forth in 36 CFR Part 60. In my opinion, the property
(☒ meets _ does not meet) the National Register criteria. I recommend that this property be considered significant (_ nationally
_ statewide ☒ locally) See continuation sheet for additional comments.)

Patricia Oster Kim
Signature of certifying official/Title

9-2-99
Date

State or Federal agency and bureau

In my opinion, the property (_ meets _ does not meet) the National Register criteria. (_ See continuation sheet for additional comments.)

Signature of certifying official/Title

Date

State or Federal agency and bureau

4. National Park Service Certification

I hereby certify that the property is :

- ☒ entered in the National Register.
- _ See continuation sheet.
- _ determined eligible for the National Register
- _ See continuation sheet
- _ determined not eligible for the National Register
- _ removed from the National Register.
- _ Other, (Explain)

Signature of Keeper

Date of Action

Edson H. Beall

10-7-99

Bandshell Park Historic District
Name of Property

Story County, Iowa
County and State

5. Classification

Ownership of Property
(Check as many lines as apply)

- ☐ private
☒ public-local
☐ public-State
☐ public-Federal

Category of Property
(Check only one line)

- ☐ building(s)
☒ district
☐ site
☐ structure
☐ object

Number of Resources within Property
(Do not include previously listed resources in the count.)

Contributing	Noncontributing	
<u>1</u>	<u>0</u>	buildings
<u>1</u>	<u>0</u>	sites
<u>2</u>	<u>0</u>	structures
<u>1</u>	<u>1</u>	objects
<u>5</u>	<u>1</u>	Total

Name of related multiple property listing
(Enter "N/A" if property is not part of a multiple property listing)

N/A

**Number of contributing resources
previously listed in the National Register**

0

6. Function or Use

Historic Functions
(Enter categories from instructions)

LANDSCAPE/park
RECREATION AND CULTURE/ music facility

Current Functions
(Enter categories from instructions)

LANDSCAPE/park
RECREATION AND CULTURE/ music facility

7. Description

Architectural Classification
(Enter categories from instructions)

MODERN MOVEMENT

Materials
(Enter categories from instructions)

foundation Concrete
walls Concrete
Stucco
roof Metal
other Glass

Narrative Description

(Describe the historic and current condition of the property on one or more continuation sheets.)

United States Department of the Interior
National Park Service

NATIONAL REGISTER OF HISTORIC PLACES
CONTINUATION SHEET

Section number 7 Page 1

CFN-259-1116

Bandshell Park Historic District, Story County, Iowa.

GENERAL DESCRIPTION

Bandshell Park is a 2.5 acre, multi-purpose, urban park accepted by the City of Ames in 1884 as a gift of railroad interests. The construction of a wood frame bandstand towards the close of the century elevated its status as an urban park and set the stage for the park's use as a center for the performing arts. A major improvement occurred in 1935 with the construction of the present-day bandshell. Today, Bandshell Park remains a highly visible reminder of Ames' musical and architectural heritage.

Bandshell Park is located directly to the east of downtown Ames. The park is rectilinear in shape. It originally measured 376' x 300' (east-west by north-south), now slightly reduced due to street widening. The park encompasses a full city block bounded on each side by streets. Duff Avenue--a traffic artery in the city--edges the property on the west, a residential district is situated to the north and the east, and the Ames Municipal Power Plant stands on the south side of the park. Many years ago, the widening of Duff Avenue decreased the size of the park slightly along its western edge.

The following detailed description of the Bandshell Park Historic District is divided into these sections:

Site
Vehicular Drive
Pedestrian Walks
Bandshell
Playground Apparatus
Bench
Other Resources
Resource Classification and Count
List of Contributing and Noncontributing Resources

The section on site describes the park as a whole. Most of the other sections describe in detail the park's specific resources and their historical evolution. The final section lists the park's resources according to National Register criteria.

SITE

Bandshell Park Historic District is located in Block 37 of the Second Addition to Ames, Iowa. Block 37 was originally platted as ten town lots and a north-south alley. This site was deeded to the City of Ames in 1884 by the C. & N. W. Land Company (a.k.a. Iowa Railroad Land Company as well as Blair Town Lot & Land Company), its proprietors.

The topography of the site slopes slightly down from the northeast to the southwest in the park. A U.S. Geological Survey bench mark is situated about one-half block to the east of the park's southern boundary and marks an elevation of 928' above sea level. The slightly sloping topography provides spectators an elevated position to view the bandshell.

United States Department of the Interior
National Park Service

NATIONAL REGISTER OF HISTORIC PLACES
CONTINUATION SHEET

Section number 7 Page 2

CFN-259-1116

Bandshell Park Historic District, Story County, Iowa.

The bandshell is situated midway along the southern boundary of the park with its stage facing the north. This location in the center of the southern boundary enables the rest of the park to serve as a seating area for audiences. (See Continuation Sheet 7-15.)

Bandshell Park Historic District is bordered on three sides by city streets: Carroll Street, 5th Street, and 6th Street. Duff Avenue forms the western edge of the park, but the western 20' of the park is excluded from the historic district for reasons discussed on Continuation Sheet 10-41. The streets themselves are also excluded from the historic district but are described here to provide more information about the site. These four streets are laid out in a grid configuration. Duff Avenue edges the park's boundary on the west. East 6th Street (formerly known as Iowa Street) edges its boundary on the north. East 6th serves as a collector street to Duff from certain portions of the surrounding residential section. Carroll Street edges the park's boundary on the east, and East 5th Street its boundary on the south. The Bandshell is situated on the south side of the park and faces north.

An intrinsic part of the site is the park's over-story tree canopy of mature and semi-mature trees, some native to the area and some specimen trees planted at various times during the park's development. (See Continuation Sheet 7-15.) The existing tree canopy consists of Black Maple, Red Oak, Hackberry, Northern Catalpa, Silver Maple, White Pine, and White Spruce. A stand of mature oak trees is situated in the northwest corner of the park. At the present time, little is known about the park's earlier tree canopy.

VEHICULAR DRIVE

Bandshell Park possesses a vehicular drive to articulate the area for transportation and to facilitate the delivery of equipment to the bandshell stage.

The vehicular drive is an historic feature of the park and dates from the 1930s, when the bandshell was constructed. The drive is U-shaped and is situated so that the bandshell is within the inner portion of the letter. One approach to the drive is accessed on East 5th Street at the west end of the bandshell. Another approach probably was accessed at the east end of the bandshell also on East 5th. This portion of the drive is now obliterated. A semi-circular segment of the vehicular drive runs in front of the bandshell proscenium and connects with the approach. The vehicular drive is constructed of poured concrete curbs with a crushed rock surface. The drive is not presently maintained as such, and grass is now reclaiming its surfaced area.

PEDESTRIAN WALKS

A network of pedestrian walks traverses the park for foot traffic. This network includes walks adjacent to two streets bordering the park--Duff Avenue and Carroll Street--and an interior walk bisecting the park diagonally. The walk bordering Duff Avenue is excluded from the nomination for reasons discussed on Continuation Sheet 10-41.

United States Department of the Interior
National Park Service

NATIONAL REGISTER OF HISTORIC PLACES
CONTINUATION SHEET

Section number 7 Page 3

CFN-259-1116

Bandshell Park Historic District, Story County, Iowa.

The walks adjacent to Duff Avenue and Carroll Street are of some age and probably date to the 1930s, when the bandshell was built. They are constructed of poured concrete. The walks are laid out to the cardinal points of the compass and run parallel and near to the streets. These walks reinforce the definition of the park's boundaries, as visually defined by the streets.

The interior walk begins in the southwestern portion of the park near the intersection of Duff Avenue and East 5th Street. The interior walk is configured like a backward letter "S". (See Continuation Sheet 7-15.) It runs diagonally to the northeast from its beginning point until it terminates near the intersection of Carroll and East 6th Streets. The interior walk was laid in the late 1980s and is constructed of concrete, scored to resemble brick pavers. Each of the faux pavers is a solid color, but the colors of the ensemble vary, giving the walk the appearance of mottled red. Although this walk is modern in construction, the layout of its course conforms to an historic pedestrian walk in the park. (Farwell T. Brown interview)

Two short pedestrian walks are situated at the rear and on each side of the bandshell. These walks provide access to that facility and East 5th Street. Although they are replacement walks of recent construction, they are of poured concrete like the original ones.

BANDSHELL

Designed by Grover M. Pratt, an architect in the Department of Architecture at Iowa State College, the Bandshell is a metal- and wood-framed building, clad with concrete and brick veneer. It was constructed in 1935 to provide a stage, rehearsal room, office, men's dressing room, women's dressing room, three corridors, rest rooms, and store rooms for the Ames Municipal Band and for its concerts. Fred Fisher of Ames served as the general contractor. J. R. Jones of Ames built the copper-clad roof. The Federal Emergency Relief Administration (FERA) program provided labor for the bandshell's excavation work.

Exterior

The bandshell consists of several parts: the stage, two side wings, and a rear wing. (See Continuation Sheet 7-17.)

The stage area of the bandshell possesses an irregularly-shaped footprint. The front of the stage measures 50' and the rear of the stage measures 18'. The side walls run diagonally to connect the front and back. The bandshell is covered with a half-domed roof, formed by structural steel and clad with a copper roof constructed with one inch standing seams. The specifications for the roof called for 16 ounce sheet metal. The radius of the stage platform to the ceiling under the roof is 26' at its highest point. The roof forms a proscenium arch on the north elevation of the bandshell. The copper roof has oxidized over the years and now is green in color. The walls of the stage area are framed with 2x4 inch studs and faced with mottle-colored, red brick veneer.

United States Department of the Interior
National Park Service

NATIONAL REGISTER OF HISTORIC PLACES
CONTINUATION SHEET

Section number 7 Page 4

CFN-259-1116

Bandshell Park Historic District, Story County, Iowa.

The proscenium of the stage is flanked on each side by wings. Constructed of mottled-colored, red brick veneer over stud walls, these 1-story wings are about 16' in height. Their footprint measures about 12' x 12'. A narrow door onto the stage is located in each of the side wings. One window is also located in each of the side wings. These windows feature a bronze grill, shaped in the stylized form of a harp. These windows possess cast concrete sills and lintels. Cast concrete, now neatly clad with brown-colored metal, also forms a coping around the top of the walls of the side wings. Also included in the side wings are two corridors running diagonally along the sides of the stage. These corridors provide interior accessibility throughout the building.

The rear wing is constructed of 2x4 inch stud walls clad with mottled-colored, red brick veneer. The rear wing is about 16' high. A series of three sets of paired windows are situated on the south elevation. A series of three metal windows situated near grade provides light to the basement, some featuring glass block. The east elevation possesses three openings, including one window and two doors. The west elevation also possesses a similar design. The windows are 6/6 double-hung sash. A parapet surrounds the roof, which is flat.

The bandshell rests on footings and a foundation of poured concrete. Its basement features, on the north elevation, a 9' wide light well. This light well is covered with a metal grille. It provides natural light to a series of five windows of opaque glass block situated below grade. These windows help illuminate the practice room.

During its planning and at the time of its construction, a few changes were made to the bandshell design. For example, the original plans called for a 32' long semi-circular area for footlights in front of the stage. This feature was not implemented. The floor of the stage was originally designed in an arrangement of 4 stepped levels, each 5' higher than the other. These built-in risers were not implemented.

Interior

The platform of the stage forms the largest space on the main floor. It measures 52' across the front and 18' across the rear. The ceiling above the stage is a half-dome in shape and clad with plaster affixed to ribbed wire lathe over steel beams. A series of light troughs are situated in this ceiling. They house incandescent light bulbs to illuminate the stage. The floor of the stage is wood. Men's and women's dressing rooms are located behind the stage. Store rooms are located on either side of the stage with interior corridors connecting all of these rooms. A stairwell is located in the southwest corner of the main floor, and a second stairwell is located in the southeast corner. These stairwells provide access to the basement of the building, as well as to the main floor, which is situated about four feet above grade.

The practice room forms the largest space in the basement. Its size generally conforms to that of the stage platform above it. The other rooms in the basement also generally conform in size to those rooms on the main floor immediately above them. The floors in the basement are concrete. (See Continuation Sheet 7-18.) A wood cabinet in the practice room stands along the south wall.

United States Department of the Interior
National Park Service

**NATIONAL REGISTER OF HISTORIC PLACES
CONTINUATION SHEET**

Section number 7 Page 5

CFN-259-1116

Bandshell Park Historic District, Story County, Iowa.

In 1996, some alterations were made to the Bandshell, designed by Haila Engineering Group, Ltd. of Boone, Iowa. A new roof was installed over the rear wing, and flashing was installed on the copper roof. Drainage tile and a sump pump were installed to alleviate water seepage into the basement. The men's and women's restrooms were relocated from the basement to the first floor. This included the replacement of the original floor of the rear wing with a poured concrete floor. Steel I-beams were installed for floor joists. The bandshell windows were replaced with metal, double-hung sash. These windows are mostly situated at the rear of the building and are not visually distracting. The water-damaged acoustical tile ceiling in the practice room was removed and not replaced. Most of the interior alterations were needed for handicap-accessibility purposes. (Nancy Carroll interview)

PLAYGROUND APPARATUS

Bandshell Park possess a variety of playground apparatus. Although this apparatus provides recreational facilities for children visiting the park, it does not possess historic value because it is of modern construction. The following list identifies this apparatus.

PLAYGROUND APPARATUS AT BANDSHELL PARK

Slide
Semi-circular jungle jim
Swings
Climbing steps and platforms

Most of this playground apparatus is constructed of wooden posts and beams.

Because the construction of the playground apparatus postdates the period of significance for the park, this equipment is counted as a noncontributing resource.

BENCH

One bench, situated in the interior of the park, features poured concrete sides supporting wooden slates for back- and seat-rests. This bench is very similar in design to those appearing in Owen Baty's 1935 watercolor drawing of the bandshell. (See Continuation Page 7-19.) This similarity suggests that this bench dates from that period of time.

OTHER RESOURCES

Bandshell Park possesses other resources situated outside the historic district and not described above. They include benches, planters, artwork, and signage. These resources are excluded from the historic district for reasons explained on Continuation Sheet 10-41. They are described here for additional information about the park.

United States Department of the Interior
National Park Service

**NATIONAL REGISTER OF HISTORIC PLACES
CONTINUATION SHEET**

Section number 7 Page 6

CFN-259-1116

Bandshell Park Historic District, Story County, Iowa.

Modern wooden benches are present in the park. They cluster in its southwest corner where the park's interior pedestrian walk intersects with the pedestrian walks along Duff Avenue and East 5th Street.

The planters are of precast concrete, cylindrical in shape, and grouped among the benches described above. These pieces of street furniture combine to form a landscaped area for passive recreation.

A free-standing, metal sculpture, mounted on two uncut rocks, is situated in the park near Duff Avenue and about midway between East 5th and 6th Streets. This sculpture is modern.

A wooden sign, about 6' x 5' in size, provides signage for Bandshell Park. It is located on the park's west side adjacent to Duff Avenue. The sign stands about seven feet tall and reads "Bandshell Park/City of Ames/Parks & Recreation Dept." It features a graphic design of the bandshell painted to resemble a rainbow arch.

Wildlife

Wildlife provides another intrinsic element to Bandshell Park. The park provides natural habitat for squirrels, rabbits, and birds. Although these resources are not included here as countable resources, their presence provides an amenity to the park.

RESOURCE CLASSIFICATION AND COUNT

Bandshell Park Historic District possesses one site, two structures, one building, and two objects for a total of six resources. This section discusses the resources within the Bandshell Park Historic District according to National Register criteria and provides an inventory of them.

SITE

Bandshell Park Historic District possesses a number of natural and man-made elements, which together form a landscape. These elements include those discussed above. This landscape, taken as a whole and including its plantings, is counted as one site and is evaluated as contributing to the historic district for reasons discussed in Section 8 of this nomination.

STRUCTURE

Bandshell Park Historic District possesses one vehicular drive. This drive provides for the delivery of equipment to the bandshell, dates from the 1930s, and is counted as one contributing resource because of its historic function and design.

United States Department of the Interior
National Park Service

NATIONAL REGISTER OF HISTORIC PLACES
CONTINUATION SHEET

Section number 7 Page 7

CFN-259-1116

Bandshell Park Historic District, Story County, Iowa.

Bandshell Park Historic District possesses a network of pedestrian walks. These walks articulate the site for patron access and recreation. They include a long walk, constructed of red-colored, faux-brick pavers, running from the northeast corner of the park to the southwest corner of the park. Also included in this network is a poured concrete pedestrian walk running parallel to Carroll Street. This network is counted as one contributing resource.

BUILDING

Bandshell Park Historic District possesses one building--the Bandshell itself. This building is counted as contributing to the historic district for the reasons discussed in Section 8 of this nomination.

OBJECT

Bandshell Park Historic District possesses two objects, one contributing and one noncontributing. An inventory of them follows:

The park possesses a poured concrete bench, counted as one contributing resource because of its age and design.

The playground apparatus is counted as noncontributing. Its installation postdates the district's period of significance and stands far outside the National Register's 50-year cut-off date.

A number of picnic tables and additional benches are situated throughout the park. They are not included in this resource count because they are not fixed to the ground.

The inventory on the following page lists the resources in Bandshell Historic District as contributing or noncontributing according to National Register criteria.

United States Department of the Interior
National Park Service

NATIONAL REGISTER OF HISTORIC PLACES
CONTINUATION SHEET

Section number 7 Page 8

CFN-259-1116

Bandshell Park Historic District, Story County, Iowa.

LIST OF CONTRIBUTING AND NONCONTRIBUTING RESOURCES

Under "Eligibility" below, "C" indicates a contributing resource
and "N" indicates a noncontributing resource to the district under the criterion listed.

Resource Name	Classification	Eligibility	
		Criterion A	Criterion C
Site	Site	C	C
Vehicular Drive	Structure	C	C
Pedestrian Walks	Structure	C	C
Bandshell	Building	C	C
Playground Apparatus	Object	N	N
Concrete Bench	Object	C	C

United States Department of the Interior
National Park Service

NATIONAL REGISTER OF HISTORIC PLACES
CONTINUATION SHEET

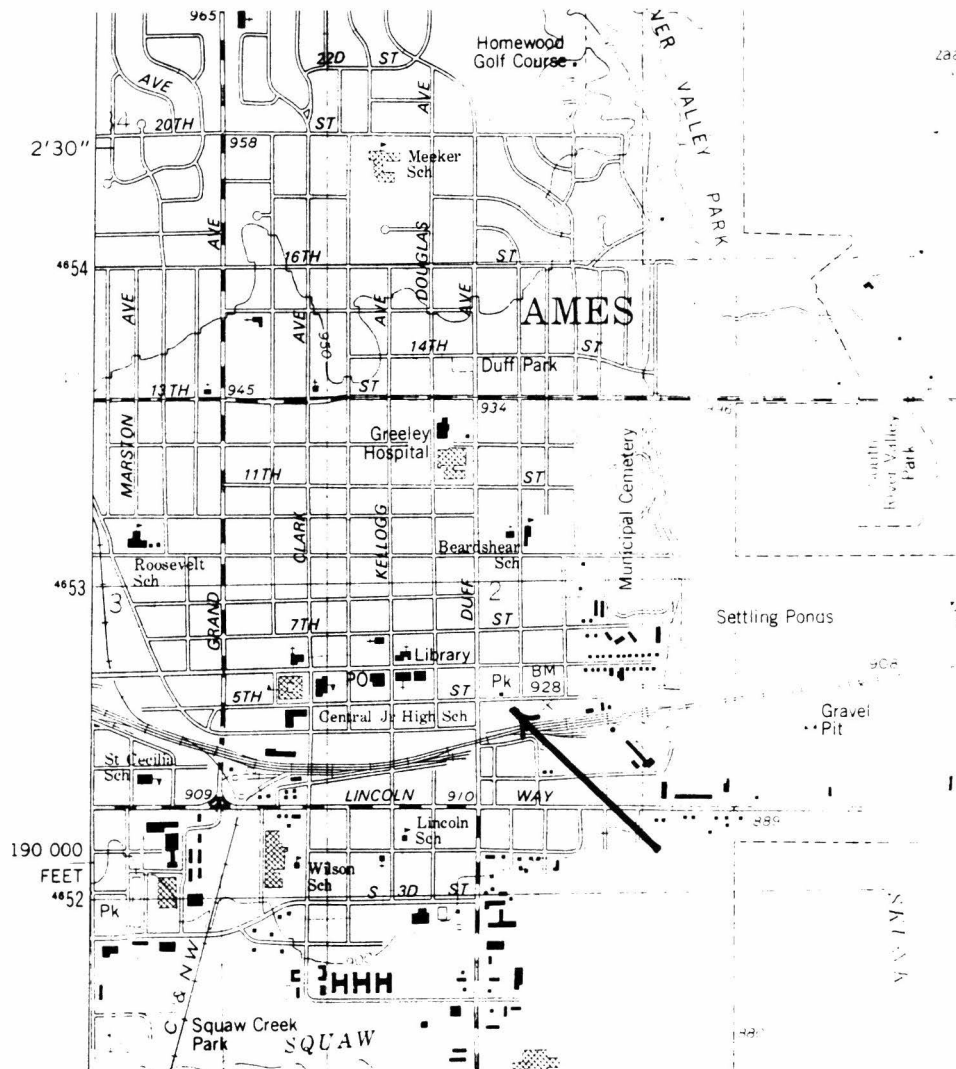
Section number 7 Page 9

CFN-259-1116

Bandshell Park Historic District, Story County, Iowa.

SITE MAP

ARROW LOCATES PROPERTY



Source: U.S.G.S. Map (7.5 Minute Series), Ames East Quadrangle, 1975.

United States Department of the Interior
National Park Service

NATIONAL REGISTER OF HISTORIC PLACES CONTINUATION SHEET

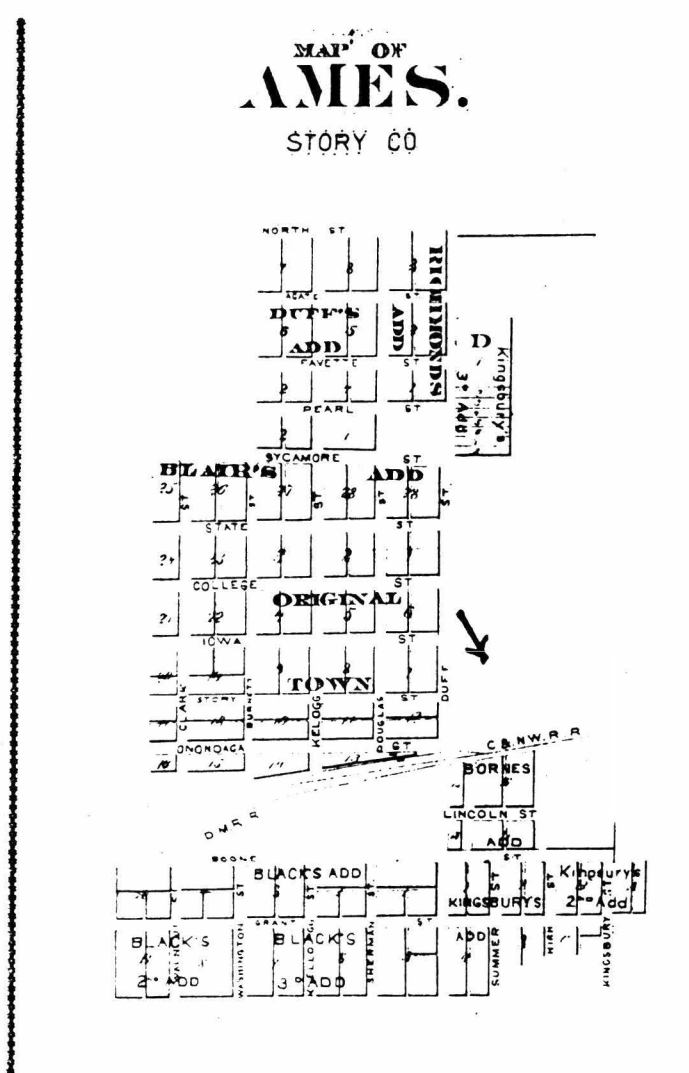
Section number 7 Page 10

CFN-259-1116

Bandshell Park Historic District, Story County, Iowa.

AMES IN 1875

ARROW LOCATES SITE OF BANDSHELL PARK



This map illustrates how Ames at this time was mostly unplatted north of the railroad and east of Duff Avenue.

Source: *Andreas Atlas of Iowa.*

United States Department of the Interior
National Park Service

NATIONAL REGISTER OF HISTORIC PLACES CONTINUATION SHEET

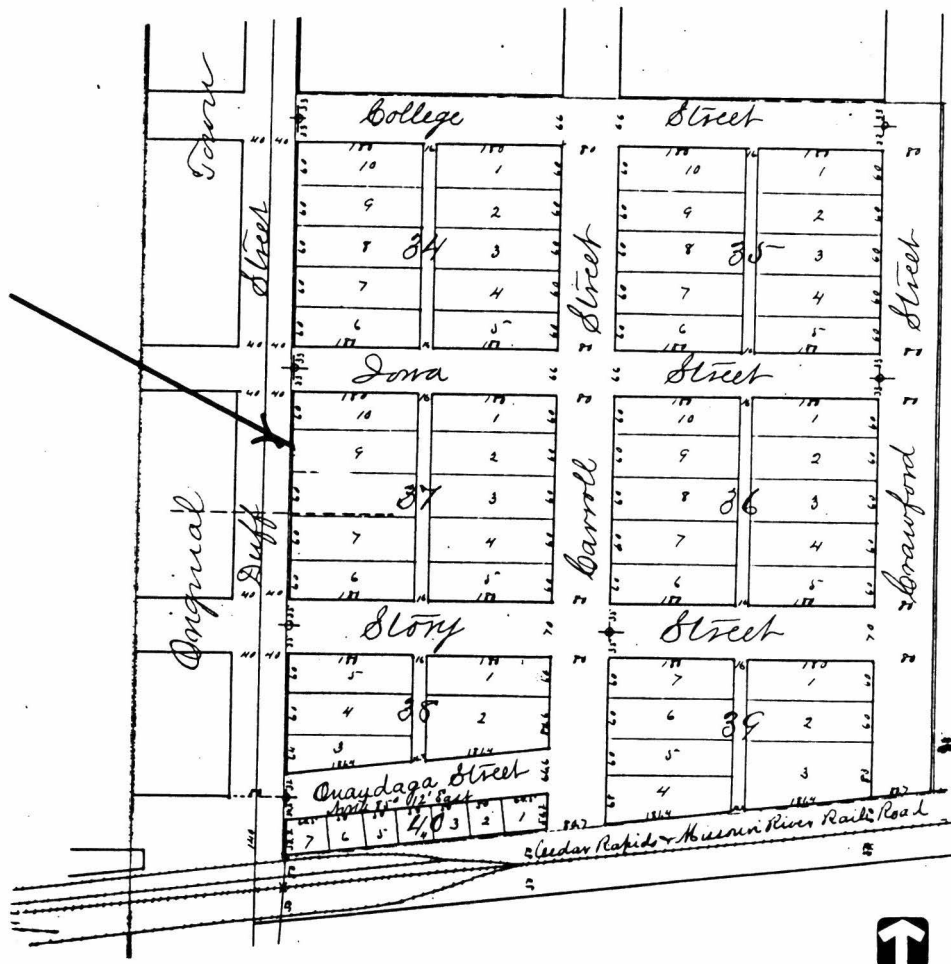
Section number 7 Page 11

CFN-259-1116

Bandshell Park Historic District, Story County, Iowa.

PLAT OF SECOND ADDITION

1880



This plat pictures Block 37--the site of Bandshell Park--no differently than other city blocks in the plat. Several years later, Block 37 became the public land now known as Bandshell Park. Story Street is now named East 5th Street, Iowa Street is East 6th, and College Street is East 7th.

Source: Plat Record Books, Story County Recorder's Office.

United States Department of the Interior
National Park Service

NATIONAL REGISTER OF HISTORIC PLACES
CONTINUATION SHEET

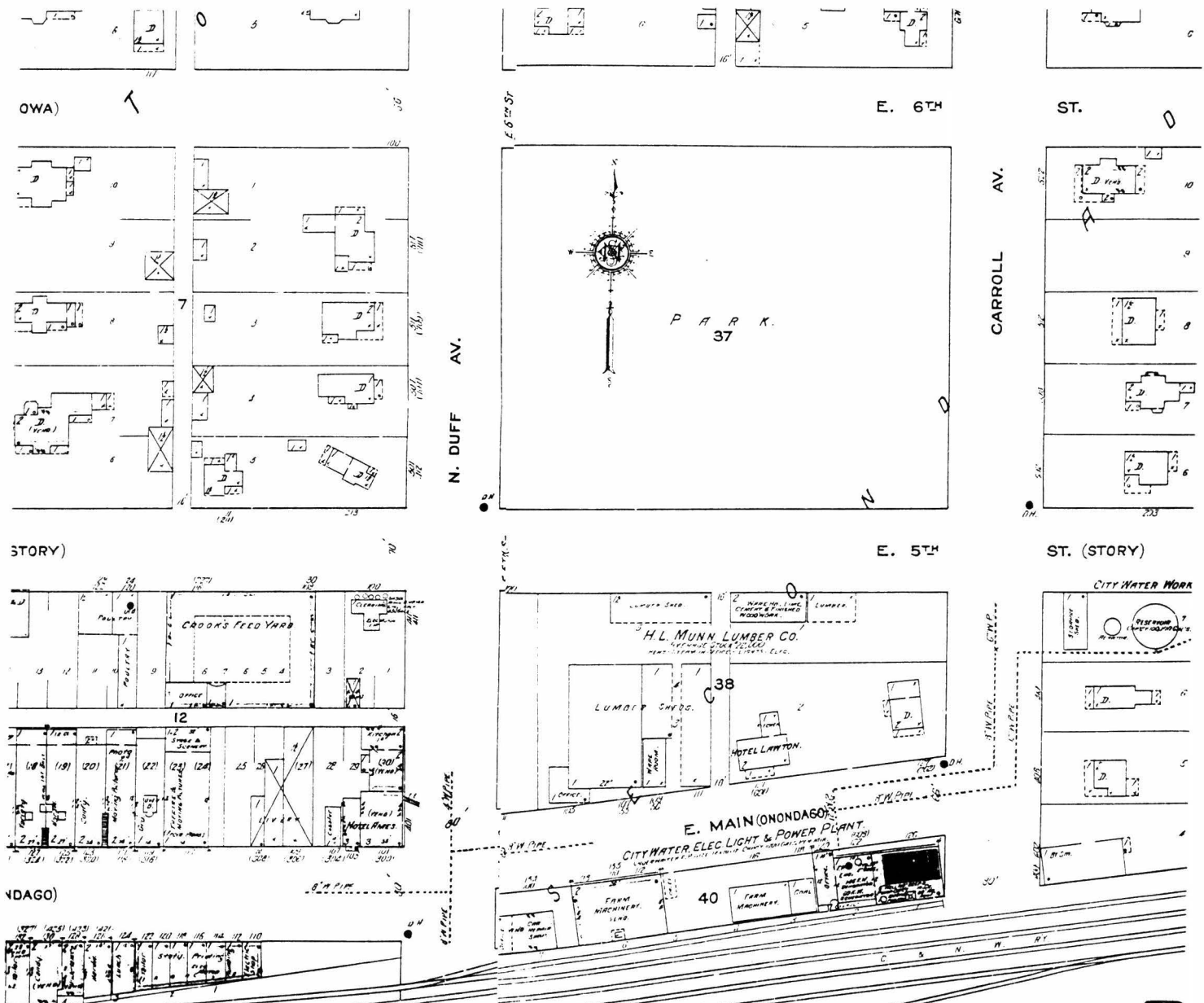
Section number 7 Page 12

CFN-259-1116

Bandshell Park Historic District, Story County, Iowa.

FIRE INSURANCE MAP

1911



Source: Sanborn Fire Insurance Map 1911, composite of pages 7 and 8.



United States Department of the Interior
National Park Service

NATIONAL REGISTER OF HISTORIC PLACES
CONTINUATION SHEET

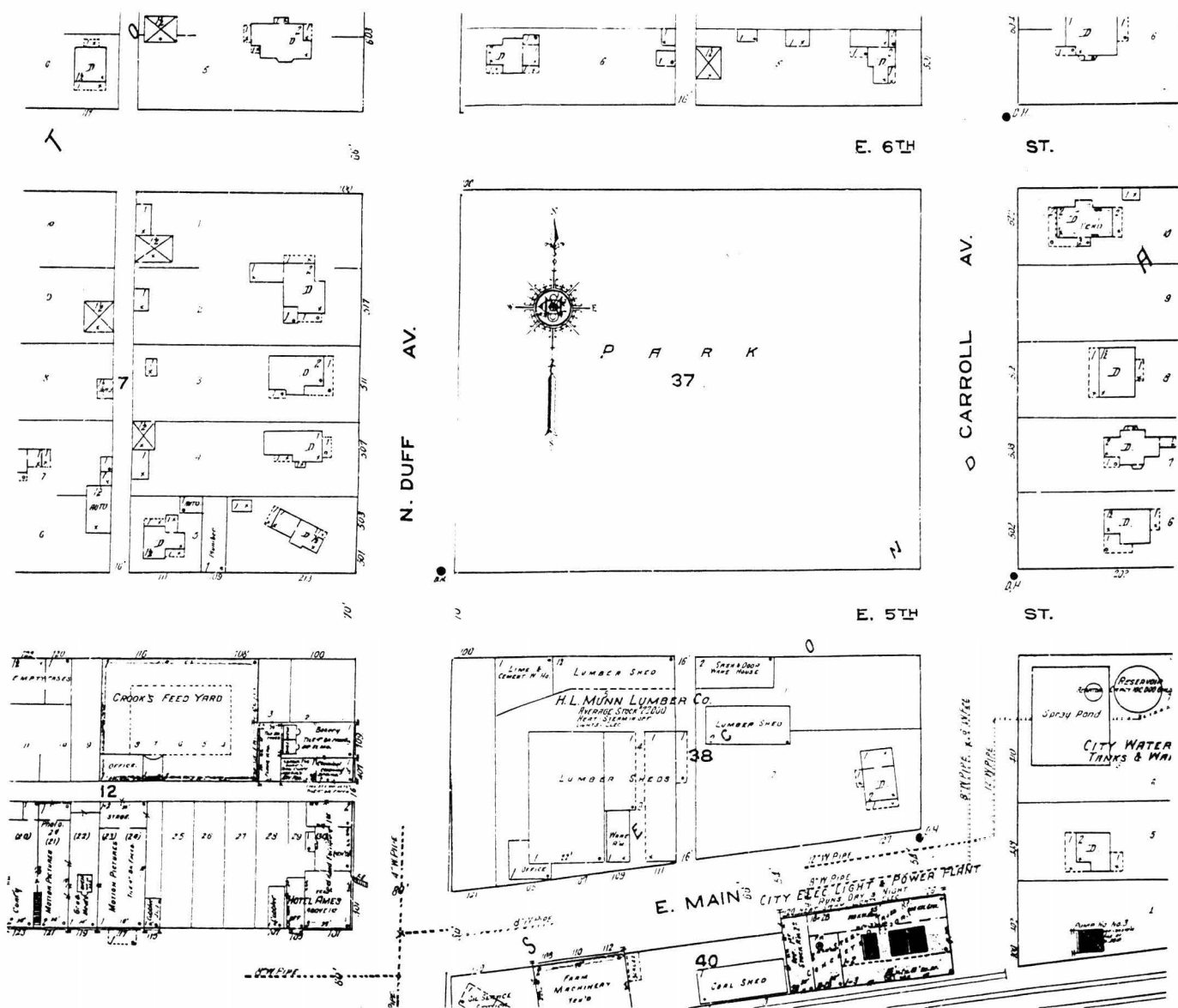
Section number 7 Page 13

CFN-259-1116

Bandshell Park Historic District, Story County, Iowa.

FIRE INSURANCE MAP

1920



Source: Sanborn Fire Insurance Map 1920, composite of pages 3 and 4.



United States Department of the Interior
National Park Service

NATIONAL REGISTER OF HISTORIC PLACES
CONTINUATION SHEET

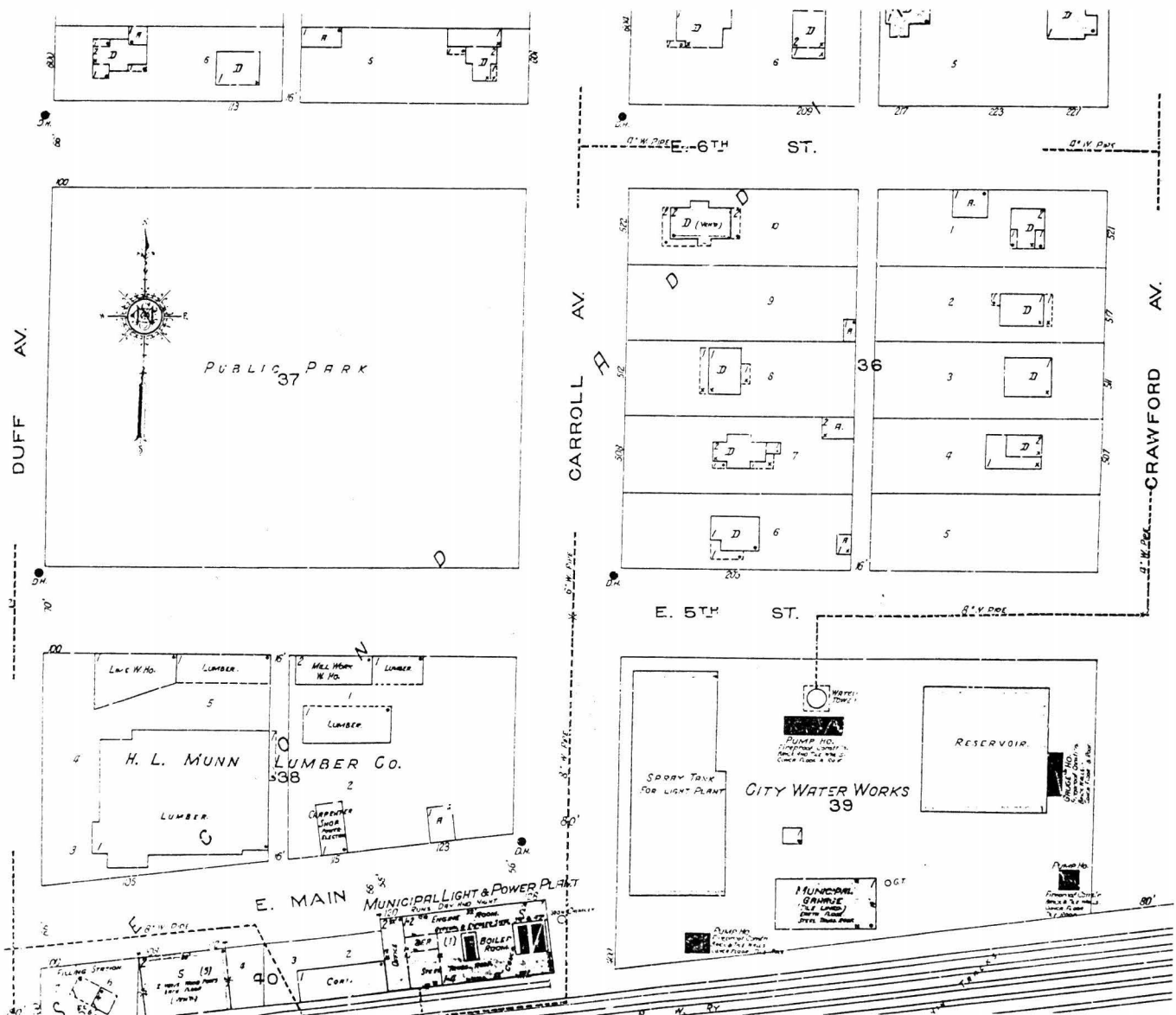
Section number 7 Page 14

CFN-259-1116

Bandshell Park Historic District, Story County, Iowa.

FIRE INSURANCE MAP

1926



United States Department of the Interior
National Park Service

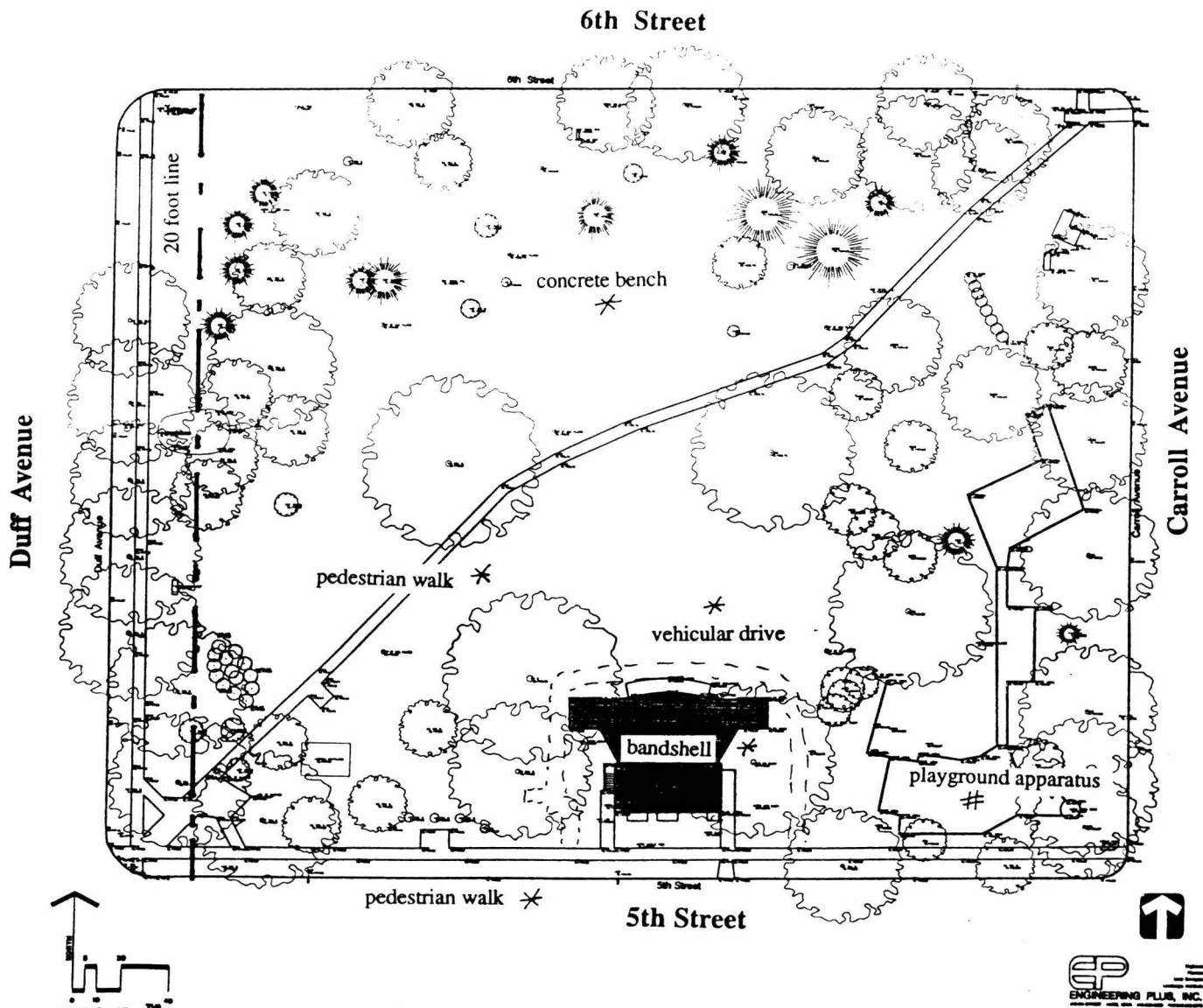
NATIONAL REGISTER OF HISTORIC PLACES CONTINUATION SHEET

Section number 7 Page 15

CFN-259-1116

Bandshell Park Historic District, Story County, Iowa.

BANDSHELL PARK HISTORIC DISTRICT BOUNDARIES



Contributing resources are shown with an asterisk (*) and noncontributing resources are shown with a pound sign (#).

Source: Engineer Plus, Inc., Ames, Iowa, 1999.

United States Department of the Interior
National Park Service

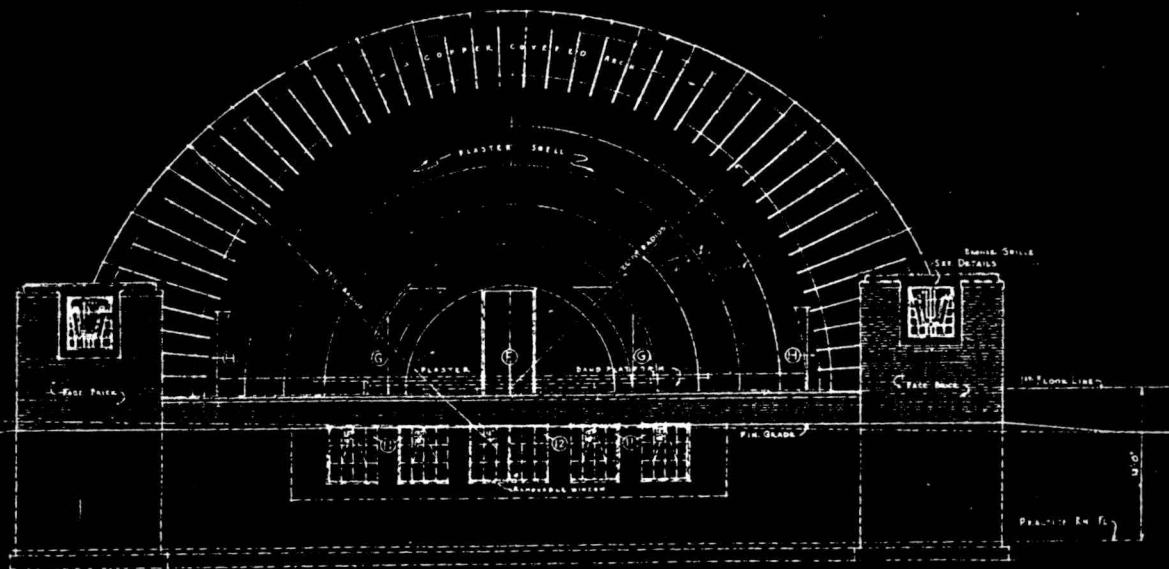
NATIONAL REGISTER OF HISTORIC PLACES CONTINUATION SHEET

Section number 7 Page 16

CFN-259-1116

Bandshell Park Historic District, Story County, Iowa.

NORTH ELEVATION OF BANDSHELL



FRONT ELEVATION.
SCALE 1/4" = 1'-0"

A MUSIC PAVILION FOR THE CITY OF AMES IA - GROVER M. PRATT ARCHITECT - - AMES IOWA -		
Job No. 100.	R. A. CAUGHEY - ENGINEER AMES IOWA	Sheet 3.
FRONT ELEVATION		

Source: Grover M. Pratt, Architect.

United States Department of the Interior
National Park Service

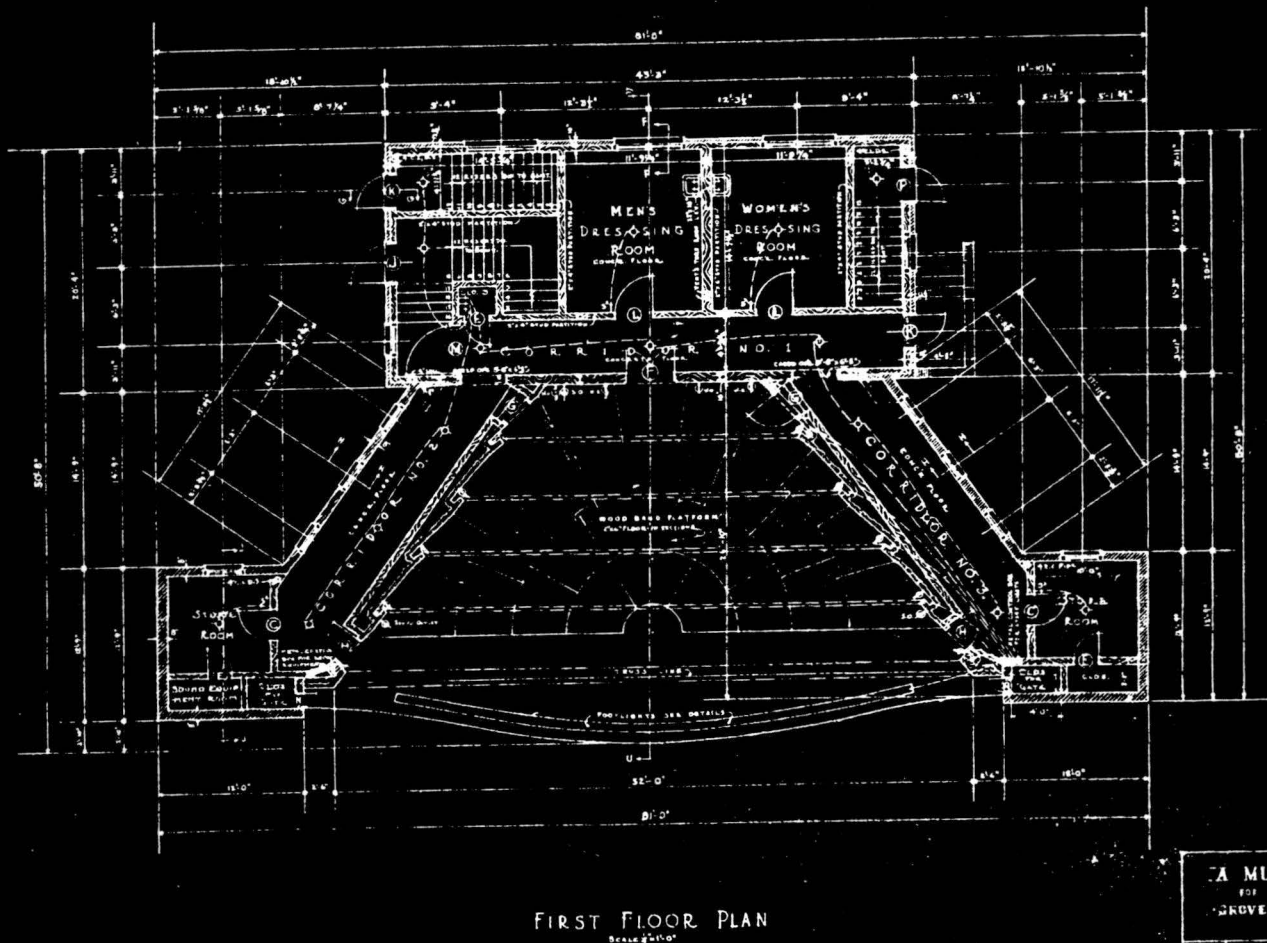
NATIONAL REGISTER OF HISTORIC PLACES CONTINUATION SHEET

Section number 7 Page 17

CFN-259-1116

Bandshell Park Historic District, Story County, Iowa.

FIRST FLOOR PLAN OF BANDSHELL



FIRST FLOOR PLAN
Scale 1/8" = 1'-0"

A MUSIC PAVILION
FOR THE CITY OF AMES, IA.
GROVER M. PRATT, ARCHITECT
AMES, IOWA

100
R. CAUDNEY, ENGINEER
AMES, IOWA
FIRST FLOOR PLAN
2

Source: Grover M. Pratt, Architect.



United States Department of the Interior
National Park Service

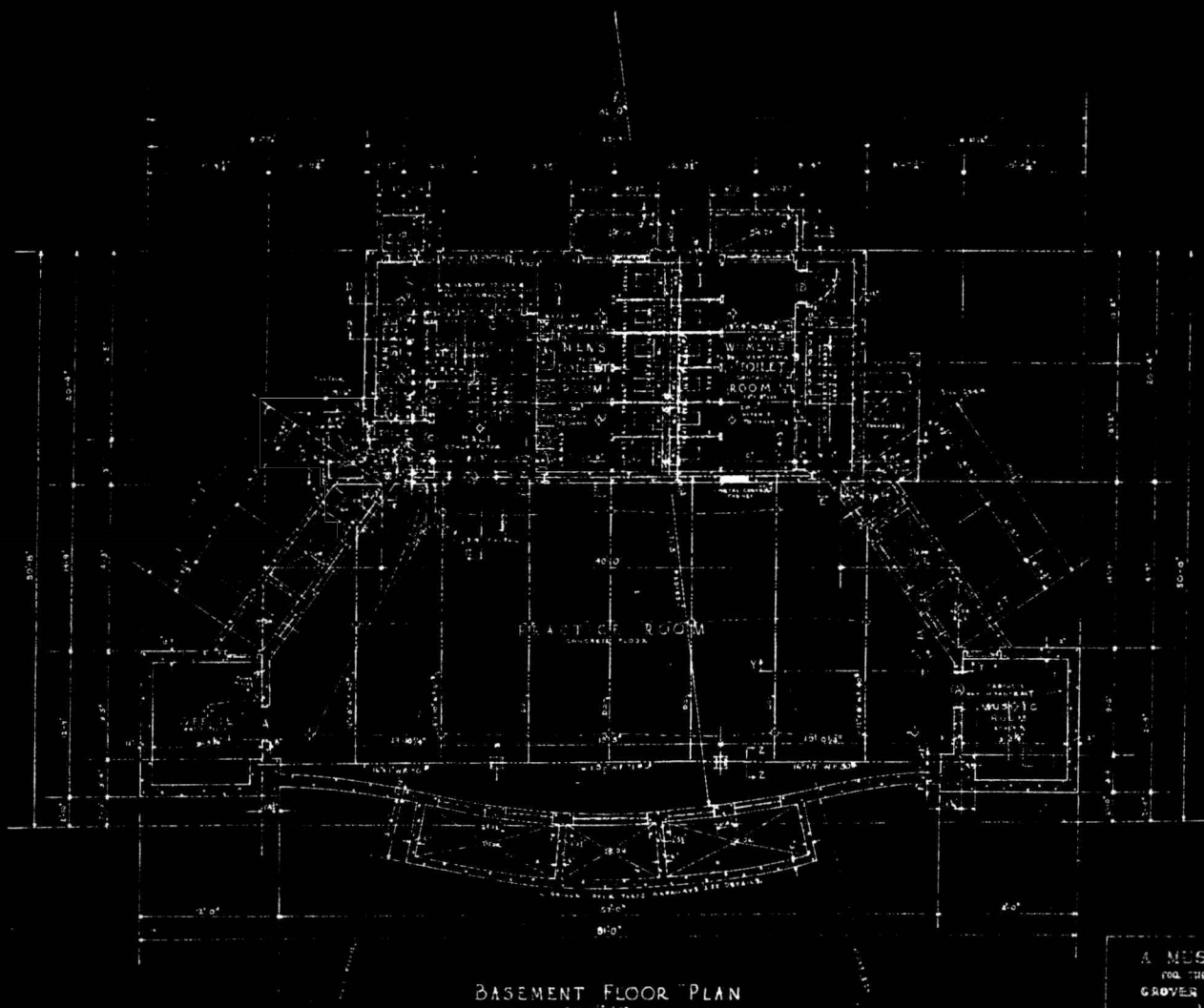
NATIONAL REGISTER OF HISTORIC PLACES CONTINUATION SHEET

Section number 7 Page 18

CFN-259-1116

Bandshell Park Historic District, Story County, Iowa.

BASEMENT FLOOR PLAN OF BANDSHELL



A MUSIC PAVILION
FOR THE CITY OF AMES, IA
GROVER M. PRATT ARCHITECT
AMES, IOWA

Job No. 100
B. A. CAUGHEY, ENGINEER
AMES, IOWA
BASEMENT FLOOR PLAN 1

Source: Grover M. Pratt, Architect.



United States Department of the Interior
National Park Service

NATIONAL REGISTER OF HISTORIC PLACES CONTINUATION SHEET

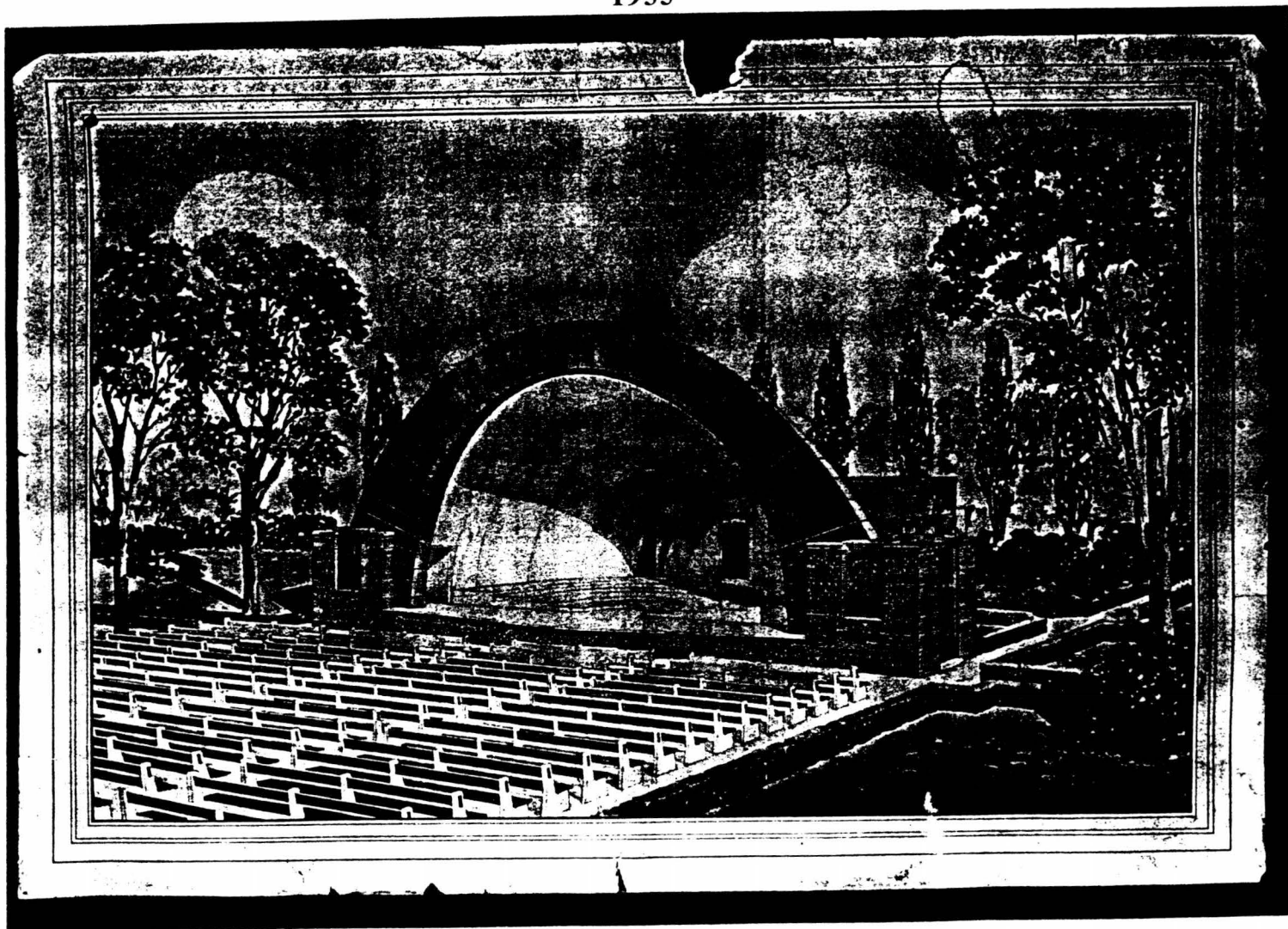
Section number 7 Page 19

CFN-259-1116

Bandshell Park Historic District, Story County, Iowa.

DRAWING BY OWEN BATY

1935



This watercolor concept plan looks to the southeast and was probably prepared as a tool to promote the bandshell's construction. Although most of the building's features were implemented, many of the site amenities--including the permanent seating, aisles between the benches, and box hedges--were not. This drawing was found recently in the attic of a house near where Grover M. Pratt lived. Owen Baty was probably one of his students.

Source: Archives of Ames Public Library.

Bandshell Park Historic District
Name of Property

Story County, Iowa
County and State

8. Statement of Significance

Applicable National Register Criteria

(Mark "x" on one or more lines for the criteria qualifying the property for National Register listing)

☒ **A** Property is associated with events that have made a significant contribution to the broad patterns of our history.

☐ **B** Property is associated with the lives of persons significant in our past.

☒ **C** Property embodies the distinctive characteristics of a type, period, or method of construction or represents the work of a master, or possesses high artistic values, or represents a significant and distinguishable entity whose components lack individual distinction.

☐ **D** Property has yielded, or is likely to yield, information important in prehistory or history.

Criteria Considerations

(Mark "x" on all the lines that apply)

Property is:

☐ **A** owned by a religious institution or used for religious purposes.

☐ **B** removed from its original location.

☐ **C** a birthplace or grave.

☐ **D** a cemetery.

☐ **E** a reconstructed building, object, or structure.

☐ **F** a commemorative property.

☐ **G** less than 50 years of age or achieved significance within the past 50 years.

Areas of Significance

(Enter categories from instructions)

ENTERTAINMENT/RECREATION

ARCHITECTURE

Period of Significance

1935-1949

Significant Dates

1935

Significant Person

(Complete if Criterion B is marked above)

N/A

Cultural Affiliation

Architect/Builder

Pratt, Grover M.

See Continuation Sheet 8-20.

Narrative Statement of Significance - (Explain the significance of the property on one or more continuation sheets)

9. Major Bibliography References

Bibliography

(Cite the books, articles and other sources used in preparing this form on one or more continuation sheets.)

Previous documentation on file (NPS):

- ☐ previous determination of individual listing (36 CFR 67) has been requested
- ☐ previously listed in the National Register
- ☐ previously determined eligible by the National Record
- ☐ designated a National Historic Landmark
- ☐ recorded by American Buildings Survey #
- ☐ recorded by Historic American Engineering Record #

Primary location of additional data:

- ☒ State Historical Preservation Office
- ☐ Other State agency
- ☐ Federal agency
- ☐ Local government
- ☐ University
- ☐ Other

Name of repository

United States Department of the Interior
National Park Service

NATIONAL REGISTER OF HISTORIC PLACES
CONTINUATION SHEET

Section number 8 Page 20

CFN-259-1116

Bandshell Park Historic District, Story County, Iowa.

ARCHITECT/BUILDER

R. A. Caughey
Fred Fisher
J. R. Jones
F.E.R.A. Workers

SUMMARY OF SIGNIFICANCE

Bandshell Park Historic District is significant, under National Register Criterion A, as a municipal park improved in the 1930s as an outdoor music facility. Specifically, the construction of a bandshell in the park in 1935 illustrates how Ames broadened cultural activities in the community by providing outdoor facilities for the performing arts and public entertainment.

Bandshell Park Historic District is significant, under National Register Criterion C, for its architecture. The bandshell building calls attention to the skills of several firms and individuals who designed and built it. They include Grover M. Pratt, a registered architect, member of the faculty of the Architectural Engineering Department of Iowa State College, and designer of the bandshell; R. A. Caughey, an engineer who partnered with Pratt for the bandshell's design; contractor-builder Fred Fisher of Ames, who served as that building's general contractor; J. R. Jones, who roofed the bandshell with copper; and Federal Emergency Relief Administration (FERA) workers, who excavated the site for the basement. The bandshell also illustrates the influence of Art Deco styling on its design.

The period of significance for Bandshell Park Historic District, under Criterion A, is 1935 to 1949, the historic period when the bandshell affected the cultural and entertainment life of the community. The period of significance, under Criterion C, is the year 1935, the time when it was constructed. The year 1935 is a significant date for the same reason.

BACKGROUND

Origins of Bandshell Park

Founded in 1864 by real estate interests associated with the Cedar Rapids & Missouri River Rail Road, Ames grew and prospered as a market and shipping center. The town's selection as the home of the Iowa State Agricultural College provided a major boost to its growth. Still, the original town plat lacked certain amenities. As described in a 1992 cultural resources survey:

The original town plat lacked any public open space, and no public lands were given over to community use. There was no public square, as in most towns founded with local government purposes in mind. (Page1992:II-30)

United States Department of the Interior
National Park Service

NATIONAL REGISTER OF HISTORIC PLACES
CONTINUATION SHEET

Section number 8 Page 21

CFN-259-1116

Bandshell Park Historic District, Story County, Iowa.

In the decades following the Civil War, a number of additions expanded Ames. They included:

EARLY ADDITIONS TO AMES

<u>Name of Addition</u>	<u>Date of Plat</u>
Borne's Addition	1866
Kingsbury's 1st Addition	1867
Kingsbury's 2nd Addition	1867
Blair's Addition	1868
Black's Addition	1868
Black's 2nd Addition	1868
Kingsbury's 3rd Addition	1869
Duff's Addition	1869
Black's 3rd Addition	1869
Richmond's Addition	1872
Second Addition	1880

(Story County Recorder's Office)

In spite of this expansion, none of these plats included any parkland. Although the population of Ames had reached 1,153 by 1880, the community still lacked a public park. An 1875 map of Ames shows its configuration at about that time. (See Continuation Sheet 7-10.)

The deficiency was addressed in 1884, at which time the Chicago & Northwestern Land Company deeded a city block for use as parkland. Already in 1882, the Blair Town Lot & Land Company had laid out the Second Plat in Ames, the location of that block. The plat included seven city blocks, numbered in sequence to follow the city blocks as numbered in the original town plat. (See Continuation Sheet 7-11.) Four of the Second Addition's blocks were of regular configuration. They each contained 10 building lots oriented to the east and west with north-south alleys dividing the blocks into two subsections. These blocks were numbered 34, 35, 36, and 37. The remaining three blocks were of irregular configuration. This irregularly stemmed from the diagonal course of the railroad tracks, which bounded the plat on the south. At the time of this platting, Block 37--the site of Bandshell Park--was laid out no differently than the other blocks in the plat. Apparently, a park was not included in the thinking of Blair Town Lot and Land Company at that time.

As a parcel of real estate, the Second Addition was conveniently located diagonally northeast of the Ames central business district and intended as a residential section of the community. Its attraction as an amenity is witnessed by the construction of notable Victorian residences nearby. These single-family dwellings include the Dr. William B. Niles House at 223 East 6th Street.

United States Department of the Interior
National Park Service

NATIONAL REGISTER OF HISTORIC PLACES
CONTINUATION SHEET

Section number 8 Page 22

CFN-259-1116

Bandshell Park Historic District, Story County, Iowa.

As mentioned above, about two years after the Second Plat was laid out, the Chicago & Northwestern Land Company deeded Block 37 to the City of Ames. In announcing this municipal acquisition, one local newspaper reported that:

The City Council has accepted from the C. & N. W. Land Co. a block of ground east of Mr. McDowell's, comprising a trifle over three acres, with all the conditions imposed by the company, for a City Park and have appropriated \$100 to improve it. We think we can safely express the gratitude of every man, woman and child in Ames, for this invaluable donation; and we are sure our citizens will sustain the council in making any appropriation of money that is required to fit the park for the purpose intended as quickly as possible. Let us have an Arbor Day for our new City Park: and systematically beautify and adorn it, and make of it one of the most enticing pleasure resorts in the county. (*Ames Intelligencer* June 7, 1884:3)

The name of the park's donor was variously identified at the time. According to the quote above, it was the Chicago & Northwestern Land Company. According to the city council minutes, it was the Blair Town Lot & Land Company. Because of John I. Blair's principal role in both companies, little distinction evidently was drawn between these names.

Two weeks later, the city council took further action as imposed by the gift:

Resolved that one Hundred (\$100.00) Dollars be and the same is hereby appropriated out of the General fund to be used in the improvements of a public park provided Block Thirty-seven (37), Blair's 2nd Addn. to Ames can be procured for Park purposes of the Blair T.L. & L. Co. without cost to the town and the Mayor and Recorder are hereby empowered to receive conveyance of said land to the Town for Park purposes only, conditional that a sufficient sum shall be appropriate and expended [illegible] to suitably improve and maintain a park.

Motion made & S. that this Resolution be adopted as read. (*Ames City Council Minutes*, Book 1, p. 106)

The vote was unanimous.

For many years, Ames residents referred to this park as "city park." Following the construction of the bandshell in 1935, people gradually began to refer to it as "Bandshell Park." By the 1960s, the use of this name had become ubiquitous.

United States Department of the Interior
National Park Service

NATIONAL REGISTER OF HISTORIC PLACES
CONTINUATION SHEET

Section number 8 Page 23

CFN-259-1116

Bandshell Park Historic District, Story County, Iowa.

Other Early Parks in Ames

Prior to the public acquisition of parks in Ames, private efforts had taken the lead to enhance the community with places of natural beauty. The Ames Cemetery Association provides the earliest example. Laid out in 1878 from a master plan designed by A. N. Carpenter, landscape architect of Galesburg, Illinois, the Ames Cemetery was a privately owned and operated facility administered by the association. Still, the fact that this cemetery was located on the edge of the community and served as burial grounds meant that it did not fulfill the role of a municipal park as we know it today.

The subsequent history of the Ames Cemetery illustrates the growing cooperation between private administration and local government in local park matters. In April 1882, the privately owned and operated Ames Cemetery Association came under the responsibilities of city government, and a one mill tax was proposed for its support. (Ames Council Minutes) Already in the 1870s, discussions had taken place regarding the administration of the cemetery. In 1874, for example, a request was made of the Corporation Council to determine what, if any, power the city council had over the trustees of the cemetery. (*Ibid.*) In 1884 a sidewalk was built from Douglas east to the cemetery. This improvement was sponsored by subscription. (*Ibid.*)

The Ames Cemetery was subsequently enlarged over the years. In June 1917, for example, the Building & Park Committee purchased nine acres of land from the George Henry Maxwell estate at the price of \$500 per acre to enlarge the cemetery. (*Ibid.*)

Further attempts to enlarge the cemetery took place in the 1920s. In 1928, for example, the Maxwell Park Association and the City of Ames negotiated for the sale of a parcel of land. This acquisition was subsequently vetoed by the mayor, who stated that it violated municipal ordinance. Problems had arisen concerning its boundaries. Attempts continued to enlarge the cemetery, and in 1929 the city acquired additional land for it. (*Ibid.*)

For many years, the Chicago and Northwestern Railroad owned and maintained a park on its depot grounds. Known as the "C.&N.W. Park," it was laid out with curvilinear walks and improved with trees, bedding plants, and shrubs. One of the floral beds featured the word "Ames" and the insignia of the Chicago and Northwestern Railroad picked out in yellow flowers. Numerous post cards survive from the early years of the Twentieth Century that picture this park as a popular beauty spot in Ames.

Early Improvements to City Park

Already in 1884, the Ames Town Council had voted to improve City Park with an appropriation of \$100.00. (Brown 1993:197) This had followed on the heels of a gift of land to the city. In accepting this gift, the city had agreed to maintain the park. The \$100.00 appropriation can be interpreted as a step to fulfill this obligation. In 1886 the Ames City Council approved a motion to "put a fence around the public park." (*Ames City Council Minutes*)

United States Department of the Interior
National Park Service

NATIONAL REGISTER OF HISTORIC PLACES
CONTINUATION SHEET

Section number 8 Page 24

CFN-259-1116

Bandshell Park Historic District, Story County, Iowa.

Still, improvements to the park moved slowly. Throughout the remainder of the Nineteenth Century and into the first decades of the Twentieth, other public works projects usually took precedence over park improvements. When they occurred, park improvements were usually in response to agitation by private groups and individuals. In 1908, for example, the city council agreed to sponsor a program of tree trimming, following agitation by the Civic Improvement Society, as organized by concerned women in Ames. The council agreed to pay for pruning trees in the city park. (*Ibid.*)

The dirth of park improvements and maintenance during the early Twentieth Century can be understood, in part, by the heavy involvement of local government in other improvements in the community. Council minutes and newspaper reports are filled with reports of reforms sponsored by the city. These issues included establishing fire limits, health regulations, infrastructure improvements, sanitary sewers, hard surfacing of streets, construction of sidewalks, and animal control. Park issues lacked priority.

Park Administration

The establishment of a board for parks in Ames, separate and distinct from the city council, required many decades; and, while that history is presently sketchy, the public vote in 1926 to establish an independent local park board provides a bench-mark for local success. The success of this referendum was significant for Bandshell Park because it soon would stimulate even greater agitation for the construction of a new bandshell.

This evolution of growing independence in Ames' park administration follows in broad outline that of many other towns and cities throughout Iowa during the same period of time. Toward the end of the Nineteenth Century, public agitation in Iowa prompted legislation by the General Assembly of Iowa to address municipal park matters. In 1884 the General Assembly authorized "cities acting under special charters and cities and incorporated towns" to elect park commissioners to "manage, improve, and supervise" municipal parks in their jurisdictions and levy special taxes to raise money for these purposes. (Iowa Acts 1884:Chapter 151) In 1892, two further bills extended the powers of park commissioners in first class cities with populations greater than 35,000. (Iowa Acts 1892:Chapters 1 & 2) Des Moines and Sioux City were the only cities of this size at that time. (For an example of how the city of Des Moines was affected by this legislation, see William C. Page's *Intensive Level Historical/Architectural Survey and Evaluation of Greenwood Park and Des Moines Art Center*, pages 1-8 through 1-12.) Public agitation for park commissions and acquisition continued. In 1907, these acts were repealed, and new legislation made the election of park commissioners mandatory in cities over 40,000 in population and optional in all other cities and towns if approved by the voters. (Iowa Acts 1907:Chapter 42)

How did these events affect the local scene in Ames? Various "park committees" of the city council had provided some leadership for indeterminate periods of time during the late Nineteenth and early Twentieth Centuries. The facts on the following page, gleaned from city council minutes, outline this evolution:

United States Department of the Interior
National Park Service

NATIONAL REGISTER OF HISTORIC PLACES
CONTINUATION SHEET

Section number 8 Page 25

CFN-259-1116

Bandshell Park Historic District, Story County, Iowa.

- In 1888 a "Public Grounds & Buildings Committee" was established for city government.
- In 1890, a parks committee is mentioned in council minutes. It appears that little became of this committee because slight mention is made of it in official records.
- Early in the year 1900, the "first" Park Committee of the Council was appointed under Mayor Thomas Thompson.
- In June 1914, the Park Committee of the Council was allowed \$250 per year to provide maintenance for the newly acquire Brookside Park. The city had received the title to this land, without charge, from J. L. Stevens, C. G. Rowe, R. H. McCarthy, and C. G. Lee.

Source: Meads' "Notations from Ames City Council Minutes."

While this succession of committees advised on park matters, the city council usually had a final say, often through its power of purse strings. Sometimes a committee could be used to deflect controversial issues. In 1918, for example, the city council referred to a committee the matter of a possible leasing of the City Park. (*Ibid.*:Book 5, p. 134) Other matters, such as that of park seats in 1919, were also referred to the Park Committee. (*Ibid.*:Book 5, p. 225)

How were park improvements and maintenance funded during this period of time? Already in 1884, the city council had authorized \$100.00 for the improvement of City Park. During the park's early years, its budget was underwritten by a variety of sources. For example in 1916, the money derived from the sale of the local pest house went into the Park Fund. (*Ibid.*:1917) Appropriations for the municipal band and their concerts were paid from the Park Fund. Other improvements--like park curbs and gutters--were also paid from the fund. These facts show that the local budget for park improvements and maintenance--like the park committees--were somewhat *ad hoc* in nature.

Finally, in 1926, the Ames City Council approved Ordinance No. 365 to establish a park commission. Presented to the voters and approved by them at a general city election on March 29, 1926, this ordinance called for a three member commission, elected at large for six year terms. (*Ibid.*:March 1, 1926) Official minutes of the city council often refer to this body as the "Park Board." Its first members included L. B. Spinney, J. Galen Tilden, and C. R. Jones.

The administration of local park matters was later augmented by the establishment of a Playground Commission. Operating by the 1940s, this commission conferred regularly with the park board and city council in matters related to recreation. A collateral matter in park administration occurred in 1951, when the control of the City Band was placed directly under the authority of the City Manager. (*Ibid.*:Book 11, p. 303)

United States Department of the Interior
National Park Service

NATIONAL REGISTER OF HISTORIC PLACES
CONTINUATION SHEET

Section number 8 Page 26

CFN-259-1116

Bandshell Park Historic District, Story County, Iowa.

Further information about later park administration is available from the minutes of the Ames City Council. These matters were not pursued because that time stands outside the period of significance for this nomination.

A matter unrelated directly to park administration but of direct concern to it is the patronage of Bandshell Park by the homeless. This has occurred, off-and-on, for at least a century. In 1911, for example, a local newspaper reporter presented the following opinion about the park:

THE CITY PARK

A record was made of those who used the shady city park during the hot afternoons since the last issue of this paper. The average attendance was 5-1/2 a day the writer being one of the five and a half. Of these 5-1/2 people 1-1/2 were Ames people. The writer being the one a day. The average number of Ames people excluding the writer would be 1/2 a day. The remaining average of four a day were tramps. The park should not be a tramp headquarters but it is. How about fixing it up. (*The Ames Times*, July 6, 1911)

Not content to view problems from the sidelines, the Ames City Council had addressed this same issue at previous times. In 1896, for example, the council moved, through Ordinance 110, to provide "food and employment for tramps." (*Ames City Council Minutes*) The presence of homeless people characterized urban life throughout the nation during the late Nineteenth Century. Railroad connections to Ames brought their presence into the community. Homelessness in America reappeared as a national problem during the 1980s. Today, the homeless are again noticeable in Bandshell Park.

CULTURAL LIFE

The construction of the Bandshell in 1935 illustrates how Ames broadened cultural activities in the community by providing modern outdoor facilities for the performing arts and public entertainment.

The Ames community has a long musical history. In 1877 the Ames Cornet Band was organized. (Brown 1993:197) Prior to the construction of the present bandshell in 1935, various sites in Ames were used for band concerts and band practice. During the early Twentieth Century, for example, the Ames band practiced on the second floor of City Hall. (*Ames Council Minutes*) The site of the band concerts varied during the early years of the Twentieth Century. In 1918, for example, the band gave concerts, by permission of the city council, at a site between 5th and Main on either side of Douglas or Kellogg Streets. (*Ames City Council Minutes*)

The popularity of municipal band concerts in the City Park increased following World War I. By the 1920s, the city band and the city council were regularly contracting with each other to provide public concerts. In 1926, for example, the council contracted with the band for a concert each Wednesday

United States Department of the Interior
National Park Service

NATIONAL REGISTER OF HISTORIC PLACES
CONTINUATION SHEET

Section number 8 Page 27

CFN-259-1116

Bandshell Park Historic District, Story County, Iowa.

night. The band was paid \$115 per month, and a band tax was fixed to finance a 20-24 piece assemble. (*Ibid.*) By 1930, the City of Ames authorized financial support for both a municipal band and a "juvenile band." (*Ibid.*:Book 7, p. 80) By 1933, R. D. Day, the new municipal band director, had organized a Junior Band in Ames to perform in summer concerts without pay. (*Ibid.*) In spite of the growing professionalism of the municipal band, its facilities were inadequate. A bandstand stood near the center of the City Park. Actually, it was little more than an "antiquated platform. . . entirely inadequate in size." (*Ames City Council Minutes*, April 16, 1934)

In 1934, under the band leadership of M. C. Severson and local civic groups, public agitation pressed for a new facility. A bandshell design a larger stage, and a practice room for the band were included in these recommendations. On April 16, 1934, a resolution, urging the construction of such a facility and signed by 31 members of the band, was presented to the Ames City Council. The Ames Woman's Club Chorus and Ames Labor Council quickly added their support. Other groups joined in, including the Ames Kiwanis Club, Ames Rotary Club, Ames Park Board, American Legion, Ames Chamber of Commerce and the music division of the Faculty Woman's Club. (Brown 1993:145)

This public agitation led to action by the Ames City Council. On November 13, 1934, the council selected Grover M. Pratt as the architect for the new bandshell. The council approved a budget of between \$10,000 and \$12,000. (*Ibid.*) The council approved final plans for construction in December 1934 and, in the Spring of 1935, issued invitations to bid on it. Ben Cole and Fred Fischer, local Ames building contractors, both submitted bids as general contractors. The council selected Fischer's low bid of \$22,880. Cole's bid was only \$1,100 higher. J. R. Jones received the contract for the copper roof. (*Ames City Council Minutes*)

Construction began in the Spring of 1935. Volunteer workers supplied some of the excavation labor. The project was completed that summer. Its total costs--\$39,072-- substantially exceeded its initial cost estimates. The city council agreed to this final cost, given the quality of the structure and certain improvements instigated during its construction. (Brown 1993:146)

The dedication of the Bandshell in 1935 confirmed its utility as a facility for the performing arts. About 10,000 people attended this event, spanning several days in June of 1935. (*Ibid.*) Concurrent with its dedication, the Eighth Annual Iowa Bandmasters Convention convened in Ames. At that time, nationally-recognized band director Dr. A. A. Harding of the University of Illinois, praised the bandshell's acoustics and facilities, stating that "the Ames Band Shell, and all of the associated accommodations, including rehearsal room, dressing rooms, library and office rooms, is the finest structure of its kind in the United States." (Brochure)

Since this time, the Bandshell has continued to contribute to the cultural life of the community. The municipal band has provided free public band concerts to the community to the present day, and the Bandshell continues to serve as the home for these concerts.

United States Department of the Interior
National Park Service

NATIONAL REGISTER OF HISTORIC PLACES
CONTINUATION SHEET

Section number 8 Page 28

CFN-259-1116

Bandshell Park Historic District, Story County, Iowa.

ARCHITECTURE

Bandshell Park Historic District is significant, under National Register Criterion C, because it calls attention to the influence of Art Deco styling. Completed in 1935, the bandshell stands as an outstanding example of Art Deco architecture in Ames. This facility is significant because of its site selection and because it calls attention to the career of Grover M. Pratt, the local architect, who designed it.

Design

The Ames Bandshell illustrates the influence of Art Deco styling on its design. As the largest built resource in the Bandshell Park Historic District, the Ames Bandshell dominates the site and serves as its focal point. This quality lends a mid-Twentieth Century feeling to the park, which belies its late Nineteenth Century establishment.

As S. Frederick Starr points out in *American Bandstands*, the bandstand as a property type dates from the mid-Nineteenth Century. The finale of bandstand construction in America occurred between 1920 and 1940. But this finale was more a whimper than a rousing march. By that time, bandstands had become passé for much of American culture, and, indeed, some of the nation's best bandstands had been razed.

Like so many of the best American bandstands, however, this one [at Pioneer Park in Lewiston, Idaho] had fallen to the wrecker's ball by 1936. (*Ibid.*:26)

The preservation of bandstands in America, according to Starr, is limited:

Thousands of bandstands were erected in America's towns and cities. Only a few remain today. (*Ibid.* 10)

If we are to believe this statement--coupled with Starr's assessment of the declining interest in bandstand construction during the 1930s--should we not suppose that the Ames Bandshell stands within this context as a significant resource for Iowa and perhaps the nation? The statements by nationally-acclaimed band leader Dr. A. A. Harding (quoted above) support this point of view. Further research is encouraged to corroborate or refute this supposition.

United States Department of the Interior
National Park Service

NATIONAL REGISTER OF HISTORIC PLACES
CONTINUATION SHEET

Section number 8 Page 29

CFN-259-1116

Bandshell Park Historic District, Story County, Iowa.

Site Selection

The architecture of the Ames Bandshell is significant for its site selection. Situated on the southern boundary of the park and midway between its east and west sides, this site provided many amenities hitherto lacking in the park.

The new site opened up a wide area for audience seating, extending a democratic feeling to the bandshell and promoting informality and sociability among the park's patrons. One scholar has noted that this is not always the case:

Bandstands with square plans had the disadvantage of urging the audience into only one quadrant of the surrounding area, thus reducing informality and sociability. (*Ibid.*:12)

In point of fact, such a situation existed in Ames prior to the construction of the bandshell. The facility it replaced stood more toward the center of the park, and the musicians faced to the east. As a result, most of the audience sat and faced to the west.

The new site for the bandshell also improved the audience's sight-lines. Seated on the lawn to the north of the bandshell, viewers benefited by the slope of the land to the north to see over the heads of those sitting in front of them to the south. The new site for the bandshell also improved the audience's vision of the stage. People no longer had to squint into the setting sun. They now viewed the stage looking to the south.

Grover M. Pratt

The Bandshell Park Historic District calls attention to Grover M. Pratt, a local architect and member of the faculty of the Department of Architectural Engineering at Iowa State College. Pratt was born about 1888. He received his B. S. degree from Syracuse University in 1911. From 1925 to 1936, he taught at Iowa State in the Department of Architectural Engineering, first as an instructor, then as an assistant professor. He continued teaching briefly at the school as an assistant professor in the Engineering Drawing Department. In 1928, Pratt was registered to practice architecture in Iowa, a license which terminated in 1941. About 1938, Pratt relocated to East Lansing, Michigan, where he taught at Michigan State University. Pratt was still living in East Lansing in 1948. (Shank:127)

In 1934, Pratt was selected by the Ames City Council to prepare the designs for a new bandshell for the park. Pratt was well known within the Ames business community and a member of the local Kiwanis club. (Brown interview 1999) His participation in civic activities may have encouraged the council to select him. Although Pratt's service on the faculty of Iowa State College attests to his technical ability as an architect, few of his actual designs in Ames have been identified to date. Probably his teaching demands consumed much of his time.

United States Department of the Interior
National Park Service

NATIONAL REGISTER OF HISTORIC PLACES
CONTINUATION SHEET

Section number 8 Page 30

CFN-259-1116

Bandshell Park Historic District, Story County, Iowa.

Following the construction of the bandshell, public criticism arose concerning the costs of its construction. Change orders, approved by the city council, had substantially increased its costs. According to one local historian:

Grover Pratt, the architect, was unhappy with the criticism. Perhaps the experience played a part in his decision some months later to accept an architectural teaching position at Michigan State University in East Lansing, Michigan. I saw him once when in East Lansing, but the subject was not mentioned. (Brown 1993:146)

Those criticisms notwithstanding, Pratt's plan for the bandshell illustrates an innovative acoustical and visually pleasing design. The facility's complex and tightly organized floor plans show Pratt's careful regard to functional efficiency. Within limited space, Pratt integrated restrooms, dressing rooms, offices, storage areas, a large stage, a practice room, and interconnecting halls, doors, and stairwells. These spaces are carefully articulated to accommodate all the comings-and-going of the musicians without being seen by the concert audience.

R. A. Caughey

Little is present known about the career of R. A. Caughey. A resident of Ames and undoubtedly associated with Iowa State, Caughey's engineering plan for the bandshell employs a very substantial skeleton of steel I-beams for its structural system. This skeleton includes a series of semi-circular arches of decreasing radii to form the superstructure of the bandshell's roof. Another set of two, larger I-beams provides additional reinforcement. One of them is situated in the hallway on the east side of the stage, and one is situated in the hallway on the west side of the stage. These two I-beams run diagonally up from the floor and connect with each of the semi-circular arches.

Acoustical Engineering

The Ames bandshell features a conical shape. Bandshells can take many different forms, including ellipsoid, spherical, parabolic, and flat. Which provides the best acoustics for an audience? In a 1945 series of articles entitled "The Acoustics of Music Shells," architect Henry L. Kamphoefner discussed this question. According to him:

Although several articles have been written describing the proper acoustical form for the reflective surfaces, no careful research or full analysis of the problem has been carried out. (Kamphoefner:93)

United States Department of the Interior
National Park Service

NATIONAL REGISTER OF HISTORIC PLACES
CONTINUATION SHEET

Section number 8 Page 31

CFN-259-1116

Bandshell Park Historic District, Story County, Iowa.

Following a discussion of early examples of sound shells, Kamphoefner examined each of the shapes listed above. As a conclusion to his investigation, Kamphoefner recommended a form with a flat rear wall plus an inclined ceiling for small audiences because of its simplicity and economy. (Kamphoefner:97) He also recommended the conical shell for large audiences, citing the Hollywood Bowl as an example. (*Ibid.*:99)

Kamphoefner cited several examples of conical-shaped facilities in Iowa, including the Grandview Park Bandshell in Sioux City (built 1935), the Peterson Memorial Pavilion in Davenport, and the Fort Dodge Pavilion at Fort Dodge (built 1935-1938).

The work contained in Kamphoefner's articles was sponsored by a fellowship from the American Institute of Architects. He was born in Des Moines, Iowa, and practiced architecture privately in Sioux City from 1932-1936. (Bowers:1) Kamphoefner designed the Sioux City and Fort Dodge facilities noted above and was undoubtedly aware of the Ames Bandshell. Unfortunately, his articles make no mention of it, although he visited at least 27 facilities across the nation and discussed at length four Iowa examples, including Sioux City, Davenport, Fort Dodge, and Ackley.

It is difficult to assess the acoustics of the Ames Bandshell because of the lack of scholarly comparisons of it with other facilities across the state and nation. As more is learned about historic bandshell acoustics, this information should be used to evaluate the Ames facility.

HISTORIC NAME

The selection of the historic name for this resource--"Bandshell Park Historic District"--reflects an historical evolution. Farwell T. Brown recalls that during his boyhood in the 1920s and early 1930s, most people referred to it as "City Park." (Brown 1993:145) The construction of the bandshell in 1935 changed this usage. The name "bandshell" came to denote the entire park through a form of speech known as synecdoche--the name of a part becoming that of the whole. This usage remains current to the present day and prompted the selection of Bandshell Park Historic District as the proper name for the resource. "City Park" is included in this nomination as another name for the resource.

Similar reasoning accounts for the selection of the name "bandshell" to denote the park's most prominent feature. Although Grover M. Pratt referred to the facility as a "music pavilion" (also included in this nomination as another name for the resource), official minutes of the Ames City Council and popular usage have historically used the name "bandshell" to describe it.

REPRESENTATION IN OTHER CULTURAL RESOURCES SURVEYS

In 1992, the City of Ames, Iowa, sponsored an historical and architectural reconnaissance survey of Ames within the corporation's limits as of 1943. Prepared by William C. Page of the Dunbar/Jones Partnership, this survey discussed "Planning, Parks, Recreation, and Beautification" as one topic within the historic context of "Civic" (Page 1992:55-57). That report also identified Bandshell Park as

United States Department of the Interior
National Park Service

**NATIONAL REGISTER OF HISTORIC PLACES
CONTINUATION SHEET**

Section number 8 Page 32

CFN-259-1116

Bandshell Park Historic District, Story County, Iowa.

a significant resource eligible for nomination to the National Register (*Ibid.*:Iowa Site Inventory Form 5-2).

Although three cultural resources studies to date have addressed public parks as an historic context in Iowa, none has mentioned Bandshell Park. Kenneth C. Acree's work in 1987 touched upon the largest urban parks in the state. Joyce McKay's study of the Civilian Conservation Corps in Iowa focused primarily on that program's work within state-owned resources. Bandshell Park stands outside the context discussed in Rebecca Conard's *Conservation Movement in Iowa: 1857-1942*.

In short, the historic context of municipal parks in Iowa is ripe for comprehensive study. Some large, municipal parks--such as Crapo Park in Burlington (NRHP); Riverview Park, Eagle Point Park, and Springdale Cemetery in Clinton; the Brucemore Estate in Cedar Rapids; and Eagle Point Park in Dubuque; as well as municipal parks in Davenport, Mason City, and Des Moines--have attracted some scholarly interest. By and large, however, municipal parks in Iowa's towns have received scant attention.

POTENTIAL FOR ARCHAEOLOGY

The potential for historic archaeological appears to be low, although evidence of the prior bandstands on this site might be discovered. The potential for pre-historic archaeology was not evaluated in this nomination.

RECOMMENDATIONS FOR FURTHER RESEARCH AND REGISTRATION

The Bandshell Park Historic District stands at the east edge of a civic corridor in Ames. The blocks between 5th and 6th Streets serve as the connecting link in this corridor and possess a series of public and private resources. This corridor extends from Bandshell Park on the east to Clark Street on the west. These resources include the former Ames High School, U.S. Post Office, the Ames Carnegie Library, First Methodist Church, and International Order of Odd Fellows Hall. Several other churches are situated adjacent to this corridor on the north. Taken together, these public and semi-public institutions form an impressive linear corridor edging the spine of the Ames central business district along Main Street to the south. Within this context, excellent potential exists for the nomination of the Ames Civic Corridor Historic District to the National Register of Historic Places. (Page 1992:60) The Bandshell Park Historic District would provide an important contributing resource to that nomination.

Future research will help flesh out the careers of Grover M. Pratt and R. A. Caughey (at the present time, their contributions to the local scene unfortunately remain largely forgotten). Also, as more is learned about American bandshells, this information should be used to assess the significance of the Ames facility within a national context.

United States Department of the Interior
National Park Service

NATIONAL REGISTER OF HISTORIC PLACES
CONTINUATION SHEET

Section number 8 Page 33

CFN-259-1116

Bandshell Park Historic District, Story County, Iowa.

ACKNOWLEDGMENTS

Frank "Ted" Tedesco and Members of the Ames City Council.
Scott Hippen and Member of the Ames Historic Preservation Commission.
Helene Adams and Members of the Bandshell Restoration Fund.
Ray D. Anderson, Planner, Department of Planning and Housing, City of Ames.
Farwell T. Brown, City Historian, City of Ames.
Nancy Carroll, Director, Park and Recreation Department, City of Ames.
Engineering Plus, Inc.: Randy Lueth, AIA, and Paul Popelka, AIA.
Janet Klaas, Reference Librarian, Ames Public Library.

United States Department of the Interior
National Park Service

NATIONAL REGISTER OF HISTORIC PLACES
CONTINUATION SHEET

Section number 9 Page 34

CFN-259-1116

Bandshell Park Historic District, Story County, Iowa.

BIBLIOGRAPHY

PRIMARY SOURCES

Ames City Council Minutes
Various

City accepts land from C. & N. W. Land Company for city park.
1884, June 21, Book 1, p. 106.

Band given use of Council Chamber.
1916, Book 4, p. 631

Park curb and gutter paid from Park Fund.
1916, Book 5, p. 55.

Pest house sale price in Park Fund.
1917, Book 5, p. 90.

Band boys granted use of Douglass and Kellogg Ave.
1917, Book 5, p. 134.

Park grounds of city on Main and Duff, matter of lease referred to committee.
1918, Book 5, p. 163.

Band appropriation from Park Fund.
1918, Book 5, p. 166.

Park Fund to band boys.
1919, Book 5, p. 166.

Park seats referred to Park Committee.
1919, Book 5, p. 225.

Park shrubbery authorized purchased.
1924, May 5, Book 6, p. 101.

Chautauqua to be secured as City Park (Brookside Park).
1925, Book 6, p. 162.

Chautauqua to be secured as City Park (Brookside Park).
1925, April 20, Book 6, p. 167.

United States Department of the Interior
National Park Service

NATIONAL REGISTER OF HISTORIC PLACES
CONTINUATION SHEET

Section number 9 Page 35

CFN-259-1116

Bandshell Park Historic District, Story County, Iowa.

Chautauqua to be secured as City Park (Brookside Park).
1925, April 27, Book 6, p. 171.

Chautauqua to be secured as City Park (Brookside Park).
1925, May, Book 6, p. 174.

Approving arrangements for use of City Park.
1928, Book 6, p. 390.

Park Board filed annual financial statement.
1928, May 7, Book 6, p. 391.

Band contract referred to Committee.
1929, Book 6, p. 511.

Band contract for 1929 to be entered into.
1929, Book 6, p. 523.

Band appropriation for Municipal & juvenile band.
1930, Book 7, p. 80.

Band committee to confer with band for leader.
1931, Book 7, p. 189.

Council expresses preference for band leader on account of lack of agreement between
members.
1931, August 20, Book 7, p. 189.

Band contract approved and ordered signed.
1931, April 27, Book 7, p. 194.

Band communications to council referred to Park Board.
1931, July 16, Book 7, p. 206.

Matter of band membership rules, etc. referred to Committee.
1933, March 6, Book 7, p. 308.

Band shell communication and committee appointed.
1934, April 16, Book 7, p. 422.

Band shell communications filed.
1934, April 23, Book 7, p. 423

Band shell petition endorsing same filed.
1934, May 7, Book 7, p. 427.

United States Department of the Interior
National Park Service

**NATIONAL REGISTER OF HISTORIC PLACES
CONTINUATION SHEET**

Section number 9 Page 36

CFN-259-1116

Bandshell Park Historic District, Story County, Iowa.

Band shell matter referred to later meeting.
1934, May 7, Book 7, p. 429.

Band communication concerning tax levy filed.
1934, July 16, Book 7, p. 455.

Band shell communication endorsing building. Special committee appointed.
1934, Nov. 5, Book 7, p. 495.

Mayor authorized to sign a contract with Grover M. Pratt to act as architect.
1934, Nov. 13, Book 7, p. 500.

Preliminary specifications presented by architect approved.
1934, Nov. 13, Book 7, p. 500.

Plans presented by architect approved with minor changes.
1934, Dec. 12, Book 7, p. 515.

Present committee on Project be continued. To present to council plans and
methods of construction of this project. Motion withdrawn.
1934, Dec. 17, Book 7, p. 515.

F.E.R.A. and relief labor to proceed on excavation and foundation of Band shell. Bids to be
secured on first floor, plumbing and heating.
1934, Dec. 17, Book 7, p. 515.

Bids for erection and furnishing of steel.
1935, Mar. 4, Book 7, p. 531.

Bids of Ben Cole and Son (\$23,985.00, extra concrete per cu. yd in place \$20.00); Fred
Fischer (\$22,880.00, extra concrete per cu. yd in place \$16.00).
1935, Mar. 18, Book 7, 546.

Bid of Fred Fischer accepted.
1935, Mar. 18, Book 7, p. 548.

Fred Fischer contract and bond.
1935, April 1, Book 7, p. 552a.

Park Board Financial Report, April 1, 1934-April 1, 1935.
1935, May 6, Book 7, p. 570.

Matter of purchasing chairs for Band Shell.
1935, May 20, Book 7, p. 573.

United States Department of the Interior
National Park Service

NATIONAL REGISTER OF HISTORIC PLACES
CONTINUATION SHEET

Section number 9 Page 37

CFN-259-1116

Bandshell Park Historic District, Story County, Iowa.

Committee to be formed and meet with Park Board concerning
control of New Music Pavillion.
1935, June 17, Book 7, p. 576.

Park Board, Report of future plans presented.
1940, Book 9, p. 153.

Park Board *Annual Report*.
1942, Book 9, p.436.

Band report: received and placed on file. Mayor & Clerk to write expressing council
appreciation on administration & report.
1943, Book 9, p. 490.

Band annual report received and placed on file, Clerk instructed to write letter of
commendation and appreciation.
1943, Book 9, p. 568.

Park Board, Letter from re calling joint meeting of Park Board, City Planning Board,
Playground Commission & Council.
1947, Book 10, p. 251.

Park Board, Mayor authorized to call meeting of with Council, City Planning Board, and
Playground Commission.
1947, Book 10, p. 251.

Band fund: legality of payment of part of janitor service for band shell questioned by R.
Decker for Ames Civic Action League; referred to City Attorney.
1949, Book 10, p. 515.

Band fund: Legality of payment of part of janitor service for band shell from upheld by
City Attorney's opinion; practice to be continued.
1949, Book 10, p. 517

City Councilman Winfrey brought up matter of City Band. City Band placed under
direction and control of City Manager.
1951, Book 11, p. 303.

Ames Intelligencer

1884 Article announcing acceptance of City Park from C. & N. W. Land Company
by Ames City Council. June 7, 1884.

Andreas, A. T.

1875 *Illustrated Historical Atlas of the State of Iowa*. Andreas Atlas Company,
Chicago.

United States Department of the Interior
National Park Service

**NATIONAL REGISTER OF HISTORIC PLACES
CONTINUATION SHEET**

Section number 9 Page 38

CFN-259-1116

Bandshell Park Historic District, Story County, Iowa.

Architectural Forum

1935 "Sioux City Bandshell." In "Forum of Events." *Architectural Forum*, Vol. 62 #2, February 1935, p. 39.

Kamphoefner, Henry L.

1945 "The Acoustics of Music Shells." Two articles in *Pencil Points*, Vol. 26 #3, September 1945, pp. 91-97 and Vol. 26 #4, October 1945, pp. 98-102.

Meads, Gladys, editor

Various Notations from Ames City Council minutes compiled by Gladys Meads and are contained in a pamphlet bound within a scrapbook she prepared, now on file at the Ames Public Library.

Pratt, Grover M.

1935 "A Music Pavilion for the City of Ames, Iowa."

These drawings, in the possession of the Park and Recreation Department of the City of Ames, include the following:

Basement Floor Plan
First Floor Plan
Front Elevation
Side Elevations
Rear Elevation
Cross Section
Wall Sections
Window Details
Door & Cabinet Details
Miscellaneous
Stair Sections
Stair Details

SECONDARY SOURCES

Acree, Kenneth C.

1987 *Iowa Conservation/Parks Movements Historic Context Report: 1890-1940*.
Copy on file at the Historical Society of Iowa.

Bowers, Martha H.

1979 "Four Buildings by Henry Kamphoefner." Report on file at the State Historical Society of Iowa; Des Moines, Iowa.

United States Department of the Interior
National Park Service

NATIONAL REGISTER OF HISTORIC PLACES
CONTINUATION SHEET

Section number 9 Page 39

CFN-259-1116

Bandshell Park Historic District, Story County, Iowa.

Brown, Farwell T.

1993 *Ames: The Early Years in Word and Picture--From Marsh to Modern City*.
Heuss Printing, Inc.; Ames, Iowa.

Brochure

1996 "A Campaign [brochure] for the Restoration of The Ames Bandshell." Ames,
Iowa, privately printed.

Conard, Rebecca

1991 "The Conservation Movement in Iowa, 1857-1942"; Multiple Property
Documentation Form for the National Register of Historic Places. Copy on
file at the Historical Society of Iowa.

Conard, Rebecca

1997 *Places of Quiet Beauty, Parks, Preserves, and Environmentalism*. University
of Iowa Press, Iowa City, Iowa.

Goudy, Willis, and Sandra Burke

1994 *Iowa's Counties, 1994*. Census Services, Department of Sociology, Iowa
State University, Ames, Iowa.

McKay, Joyce

1991 "Civilian Conservation Corps Properties in Iowa State Parks: 1933-42";
Multiple Property Documentation Form for the National Register of Historic
Places. Copy on file at the Historical Society of Iowa.

Meads, Gladys

N.d. *Gladys Meads Scrapbook*. This document, curated at the Ames Public
Library, contains many photographs and other historic images of local history
in Ames.

Naumann, Molly Myers

1993 "Estes Park Band Shell." National Register of Historic Places nomination on
file at the State Historical Society of Iowa; Des Moines, Iowa.

Page, William C.

1990 "Intensive Level Historical/Architectural Survey and Evaluation of
Greenwood Park and Des Moines Art Center"; Report prepared for and on file
at the Des Moines Art Center and State Historical Society of Iowa.

United States Department of the Interior
National Park Service

**NATIONAL REGISTER OF HISTORIC PLACES
CONTINUATION SHEET**

Section number 9 Page 40

CFN-259-1116

Bandshell Park Historic District, Story County, Iowa.

Page, William C.

1992 "Historical and Architectural Resources of Ames, Iowa, including an Intensive Survey of the Central Business District." Three volumes. Report prepared for the Department of Planning and Housing of the City of Ames and on file at the State Historical Society of Iowa.

Shank, Wesley, I.

1999 *Iowa's Architects, A Biographical Dictionary*. University of Iowa Press; Iowa City, Iowa.

Starr, S. Frederick

c. 1987 "Bandstands & American Urbanism." *The Oberlin Book of Bandstands*. Preservation Press; Washington, D. C.

HISTORIC IMAGES

Bandshell Drawing

1935 Archives of the Ames Public Library, Ames, Iowa. Watercolor drawing of Ames bandshell, signed Owen Baty. View looks to southeast. Original measures about 10.5 x 7.25 inches (including margins).

Site Plan, Bandshell Park

1998 Prepared by Engineering Plus, Inc., Ames, Iowa.

FIRE INSURANCE MAPS

Sanborn Map Company, New York, NY. Maps of Ames, Iowa, 1911, 1920, and 1926.

ORAL HISTORY

Brown, Farwell T.

1999 Informant interview with William C. Page, March 18, 1999.

Bandsell Park Historic District
Name of Property

Story County, Iowa
County and State

10. Geographical Data

Acreage of Property 2.5 acre +/-

UTM References

(Place additional UTM references on a continuation sheet.)

1	1 5	4 4 9 7 2 0	4 5 5 2 14 8 0
---	-----	-------------	----------------

Zone Easting Northing

2	1 5	4 4 9 7 2 0	4 6 5 2 6 0 0
---	-----	-------------	---------------

Zone Easting Northing

3	1 5	4 4 9 4 8 0	4 6 5 2 6 0 0
---	-----	-------------	---------------

Zone Easting Northing

4	1 5	4 4 9 6 1 5	4 6 5 2 4 8 0
---	-----	-------------	---------------

Verbal Boundary Description

(Describe the boundaries of the property on a continuation sheet)

Boundary Justification

(Explain why the boundaries were selected on a continuation sheet)

11. Form Prepared By

name/title William C. Page, Public Historian; Joanne R. Page, Project Associate
organization City of Ames, Iowa date April 16, 1999
street & number 520 East Sheridan Avenue (Page) telephone 515-243-5740; FAX 515-243-7285
city or town Des Moines state Iowa zip code 50313-5017

Additional Documentation

Submit the following items with the completed form:

Continuation Sheets

Maps

A **USGS map** (7.5 or 15 minute series) indicating the property's location.

A **Sketch map** for historic districts and properties having large acreage or numerous resources.

Photographs - Representative **black and white photographs** of the property.

Additional items - (Check with the SHPO or FPO for any additional items)

Property Owner

(Complete this item at the request of SHPO or FPO.)

name City of Ames, Iowa
street & number 515 Clark telephone 515-239-5125
city or town Ames state Iowa zip code 50010

Paperwork Reduction Act Statement: This information is being collected for applications to the National Register of Historic Places to nominate properties for listing or determine eligibility for listing, to list properties, and to amend existing listings. Response to this request is required to obtain a benefit in accordance with the National Historic Preservation act, as amended (16 U.S.C. 470 et seq.).

Estimated Burden Statement: Public reporting burden for this form is estimated to average 18.1 hours per response including time for reviewing instructions, gathering and maintaining data, and completing and reviewing the form. Direct comments regarding this burden

United States Department of the Interior
National Park Service

NATIONAL REGISTER OF HISTORIC PLACES
CONTINUATION SHEET

Section number 10 Page 41

CFN-259-1116

Bandshell Park Historic District, Story County, Iowa.

GEOGRAPHICAL DATA

Verbal Boundary Description

Block 37 in the Second Addition to the City of Ames, Iowa, excluding the west twenty feet adjacent to Duff Avenue from 5th Street to 6th Street.

Boundary Justification

The National Register boundary contains all land associated historically with this resource except for the west twenty feet, noted above, which is part of a future widening project for Duff Avenue.

The nominated area retains the integrity of the area surrounding the Bandshell--the centerpiece of the district--and provides a sufficient setting for it.

United States Department of the Interior
National Park Service

NATIONAL REGISTER OF HISTORIC PLACES
CONTINUATION SHEET

Section number 10 Page 42

CFN-259-1116

Bandshell Park Historic District, Story County, Iowa.

LIST OF PHOTOGRAPHS

1. Bandshell Park Historic District
Ames, IA
Bandshell
Duff Avenue between East 5th & 6th Streets
Looking southeast
William C. Page, Photographer
November 24, 1998
2. Bandshell Park Historic District
Ames, IA
Bandshell, detail of proscenium and stage
Duff Avenue between East 5th & 6th Streets
Looking southeast
William C. Page, Photographer
November 24, 1998
3. Bandshell Park Historic District
Ames, IA
Bandshell
Duff Avenue between East 5th & 6th Streets
Looking northwest
William C. Page, Photographer
November 24, 1998
4. Bandshell Park Historic District
Ames, IA
Bandshell
Duff Avenue between East 5th & 6th Streets
Looking northeast
William C. Page, Photographer
November 24, 1998

United States Department of the Interior
National Park Service

NATIONAL REGISTER OF HISTORIC PLACES
CONTINUATION SHEET

Section number 10 Page 43

CFN-259-1116

Bandshell Park Historic District, Story County, Iowa.

5. Bandshell Park Historic District
Ames, IA
Parkland
Duff Avenue between East 5th & 6th Streets
Looking northeast
William C. Page, Photographer
November 24, 1998
6. Bandshell Park Historic District
Ames, IA
Pedestrian walk along Duff Avenue
Duff Avenue between East 5th & 6th Streets
Looking north
William C. Page, Photographer
November 24, 1998
7. Bandshell Park Historic District
Ames, IA
Entrance to park at southwest corner
Duff Avenue between East 5th & 6th Streets
Looking northeast
William C. Page, Photographer
November 24, 1998

UNITED STATES DEPARTMENT OF THE INTERIOR
NATIONAL PARK SERVICE

NATIONAL REGISTER OF HISTORIC PLACES
EVALUATION/RETURN SHEET

REQUESTED ACTION: NOMINATION

PROPERTY Bandshell Park Historic District
NAME:

MULTIPLE
NAME:

STATE & COUNTY: IOWA, Story

DATE RECEIVED: 9/09/99 DATE OF PENDING LIST: 9/21/99
DATE OF 16TH DAY: 10/07/99 DATE OF 45TH DAY: 10/24/99
DATE OF WEEKLY LIST:

REFERENCE NUMBER: 99001238

REASONS FOR REVIEW:

APPEAL: N DATA PROBLEM: N LANDSCAPE: N LESS THAN 50 YEARS: N
OTHER: N PDIL: N PERIOD: N PROGRAM UNAPPROVED: N
REQUEST: N SAMPLE: N SLR DRAFT: N NATIONAL: N

COMMENT WAIVER: N

☒ ACCEPT ☐ RETURN ☐ REJECT 10/7/99 DATE

ABSTRACT/SUMMARY COMMENTS:

Entered in the
National Register

RECOM./CRITERIA _____

REVIEWER _____ DISCIPLINE _____

TELEPHONE _____ DATE _____

DOCUMENTATION see attached comments Y/N see attached SLR Y/N