



July 30, 2025

TO WHOM IT MAY CONCERN:

This is to inform you that on **Wednesday, August 6, 2025**, the City of Ames Planning and Zoning Commission will consider the request of Friedrich Land Development to approve a Rezone with Master Plan for property located at 3220 Cameron School Road from Agricultural (A) to Suburban Residential Medium Density (FS-RM) and Convenience General Service (CGS). A location map showing the location of the property is attached for your information.

Since you are the owner of property within 400 feet of the proposed zoning change, you are invited to attend the Planning and Zoning Commission meeting on **Wednesday, August 6, 2025, at 7:00 p.m., in the Council Chambers** located on the second floor of Ames City Hall at 515 Clark Avenue. If you plan to attend, please enter the building through the main building entrance. As it is difficult to contact all interested persons, we respectfully ask you to inform others in your area.

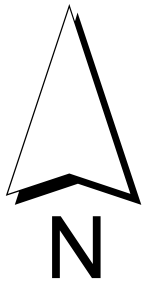
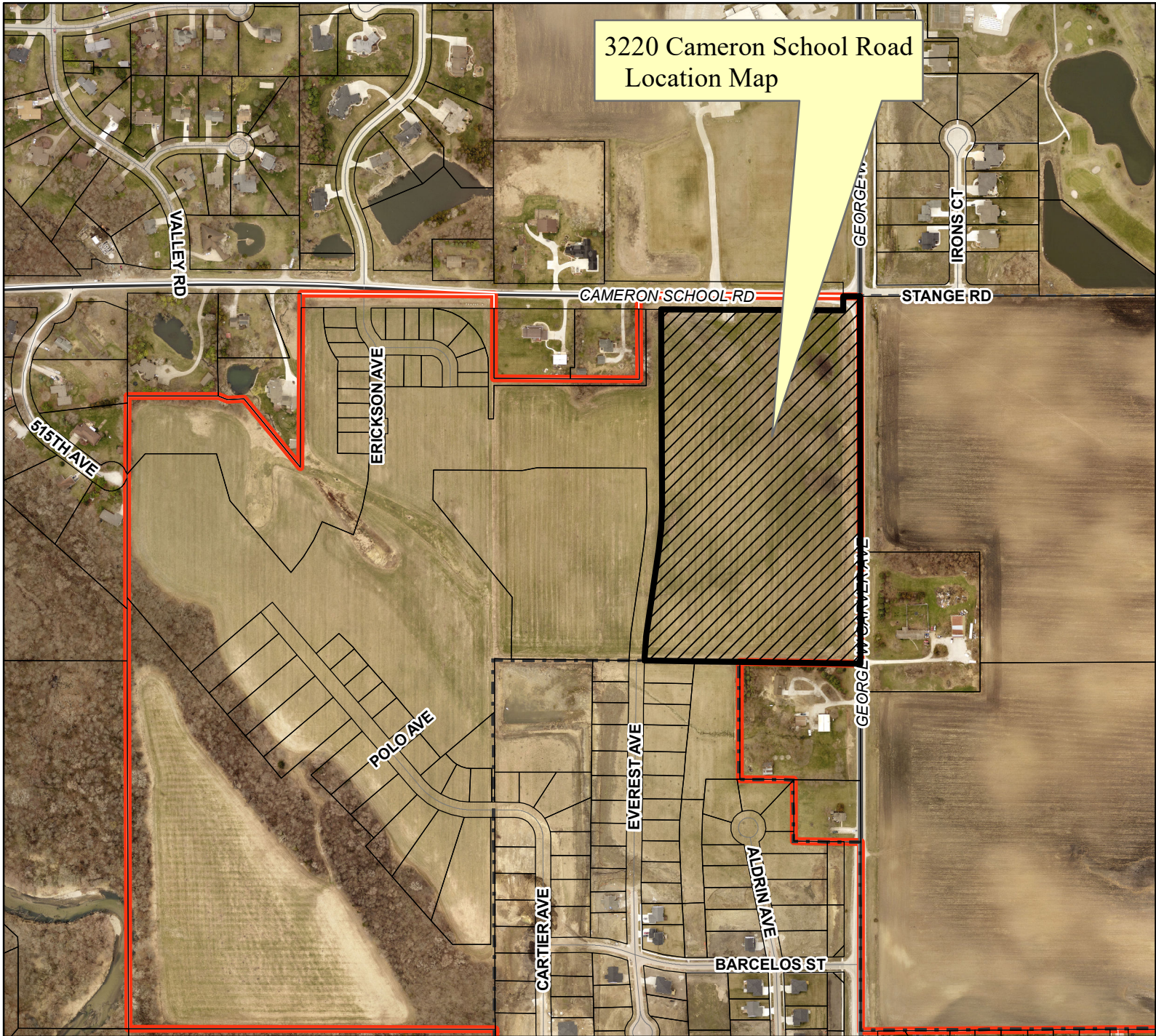
The staff report for this Rezone with Master Plan request will be available on the City's website after 5:00 p.m. on Friday, August 1, 2025 at www.cityofames.org/planning.

If you have any questions or comments prior to the meeting, or if you cannot attend the meeting and wish to make your opinion known, please call the Planning and Housing Department at 515-239-5400 for more information or provide an email to planning@cityofames.org for consideration by the Planning and Zoning Commission.

Sincerely,


Justin Moore
Planner

JM/ec



3220 Cameron School Road Location Map

Legend

-  PARCELS
- STREET LABELS - ALL @ 50000FT
- Private
- - - - ISU Road
- City Road
- County Secondary
- County Hwy
- State Hwy
- US Hwy
- US Interstate Hwy