

CITY OF AMES

**AMES
CITIZENS**

**CONFERENCE
BOARD**

City Assessor

HOSPITAL BOARD

Mary Greeley
Medical Center

**MAYOR &
CITY COUNCIL**

City Manager

Legal

TRANSIT BOARD

CyRide

**LIBRARY BOARD OF
TRUSTEES**

Library

Assistant
City Manager

Assistant
City Manager

**Fleet
Services**

Administration
Maintenance
Program
Replacement
Program
Facilities

**Parks &
Recreation**

Administration
Ames/ISU
Ice Arena
Aquatics
Cemetery
Community
Center
Homewood
Golf Course
Parks
Maintenance
Forestry

**Water and
Pollution
Control**

Administration
Water Plant
Water Pollution
Control Plant
Water Meter
Laboratory
Services

City Clerk

**Communications
and Outreach**

Print Shop

Electric

Administration
Distribution
Engineering
Tech Services
Production
Energy Markets

Finance

Administration
Accounting
Customer
Services
Meter Reader
Information
Services
Purchasing

Fire

Fire
Station #1
Fire
Station #2
Fire
Station #3
Administration
Inspections
Prevention
Sanitation
Support
Services

**Human
Resources**

Health
Promotion
Risk
Management

Police

Patrol
Criminal
Investigation
Support
Services
Animal
Control &
Shelter

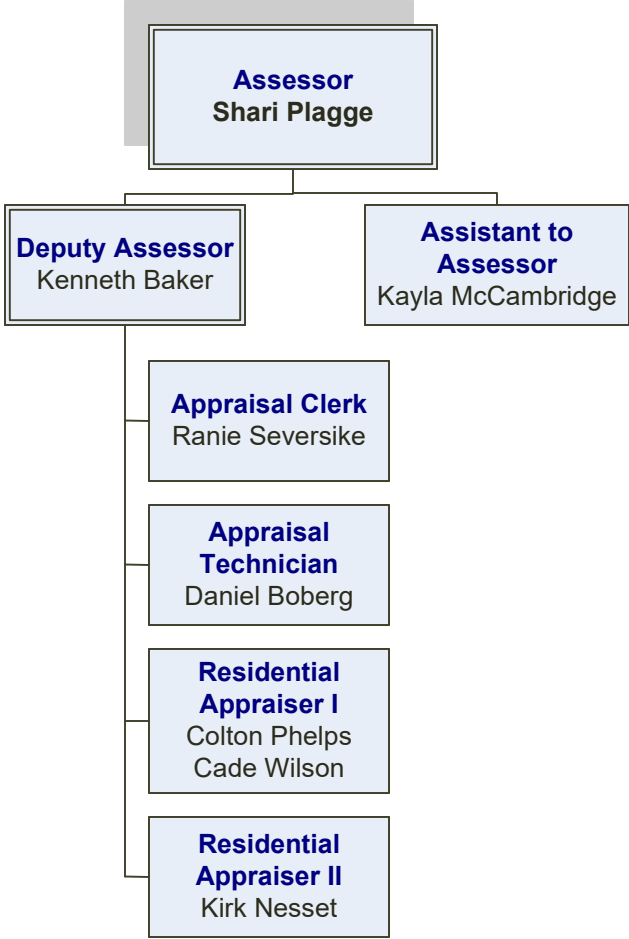
**Planning
& Housing**

Housing
Planning

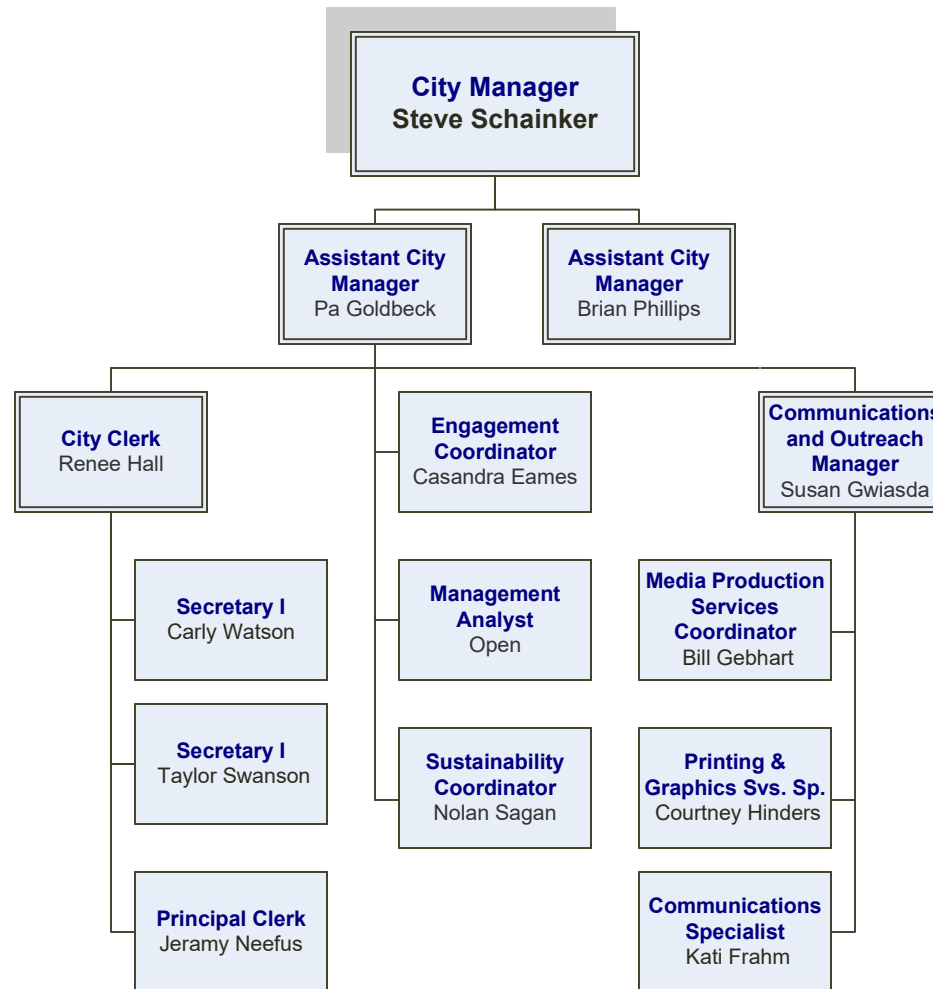
Public Works

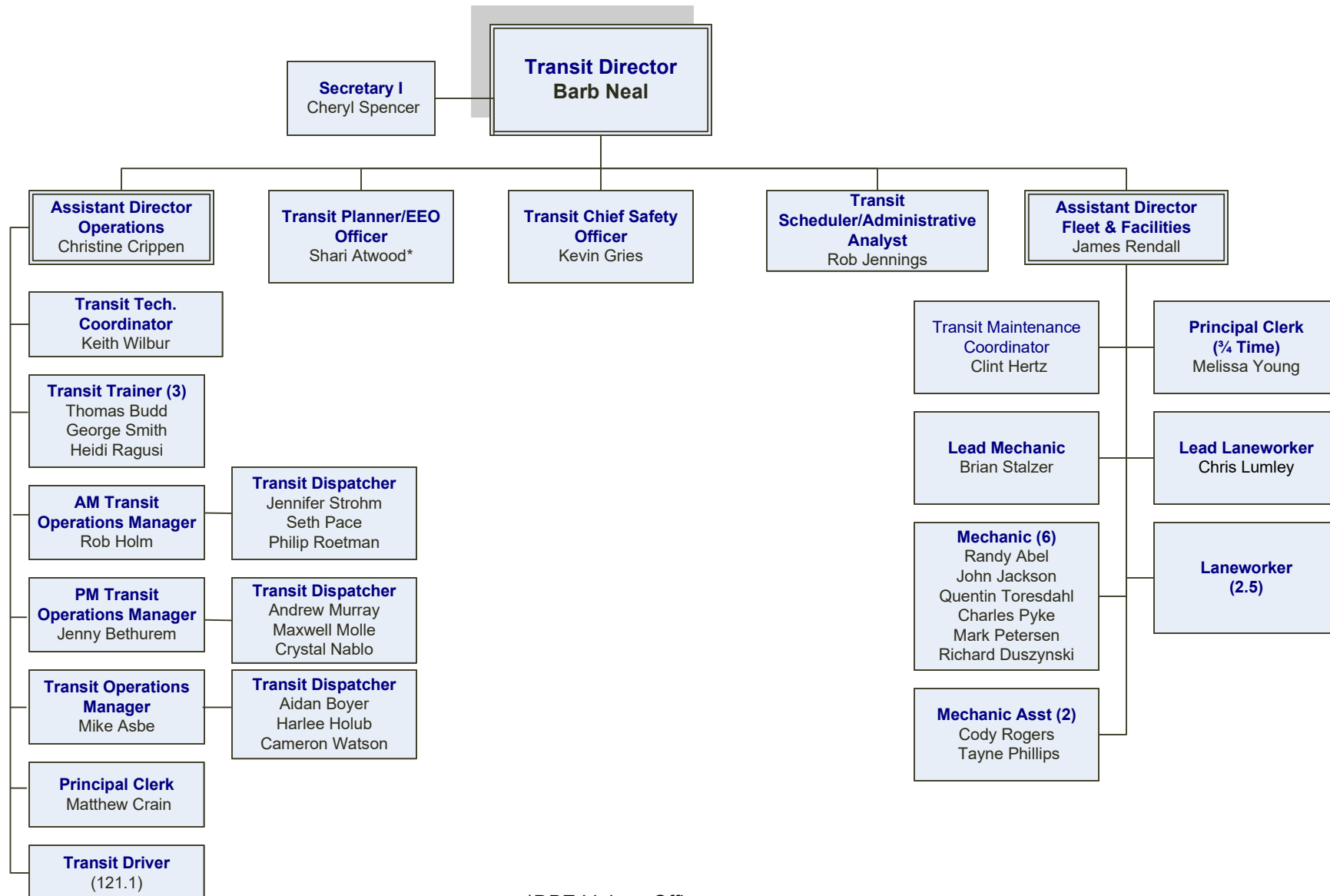
Administration
Airport
Engineering
Parking Meter
Repair
Resource
Recovery
Streets
Traffic
Utility
Maintenance

CITY ASSESSOR



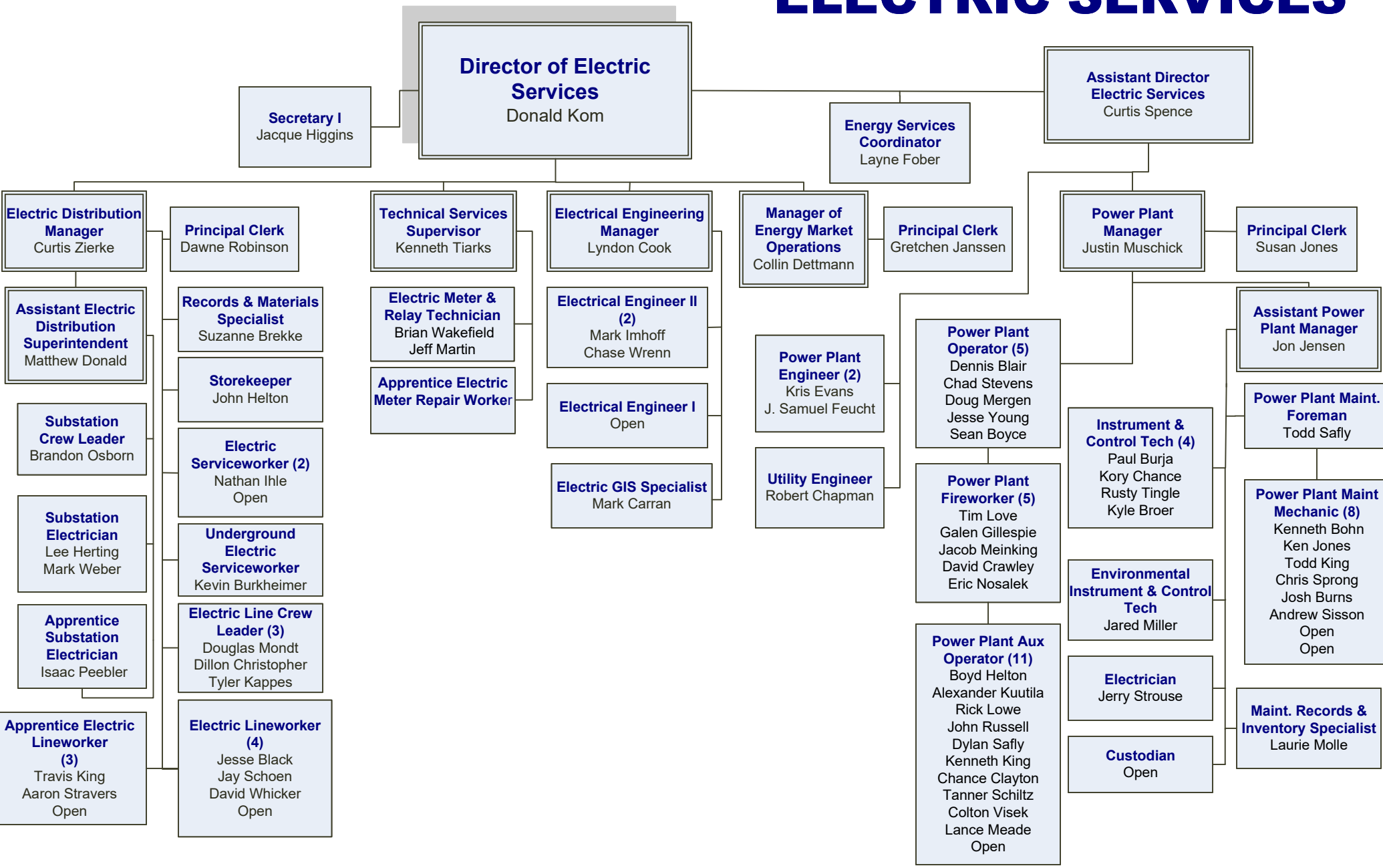
CITY MANAGER



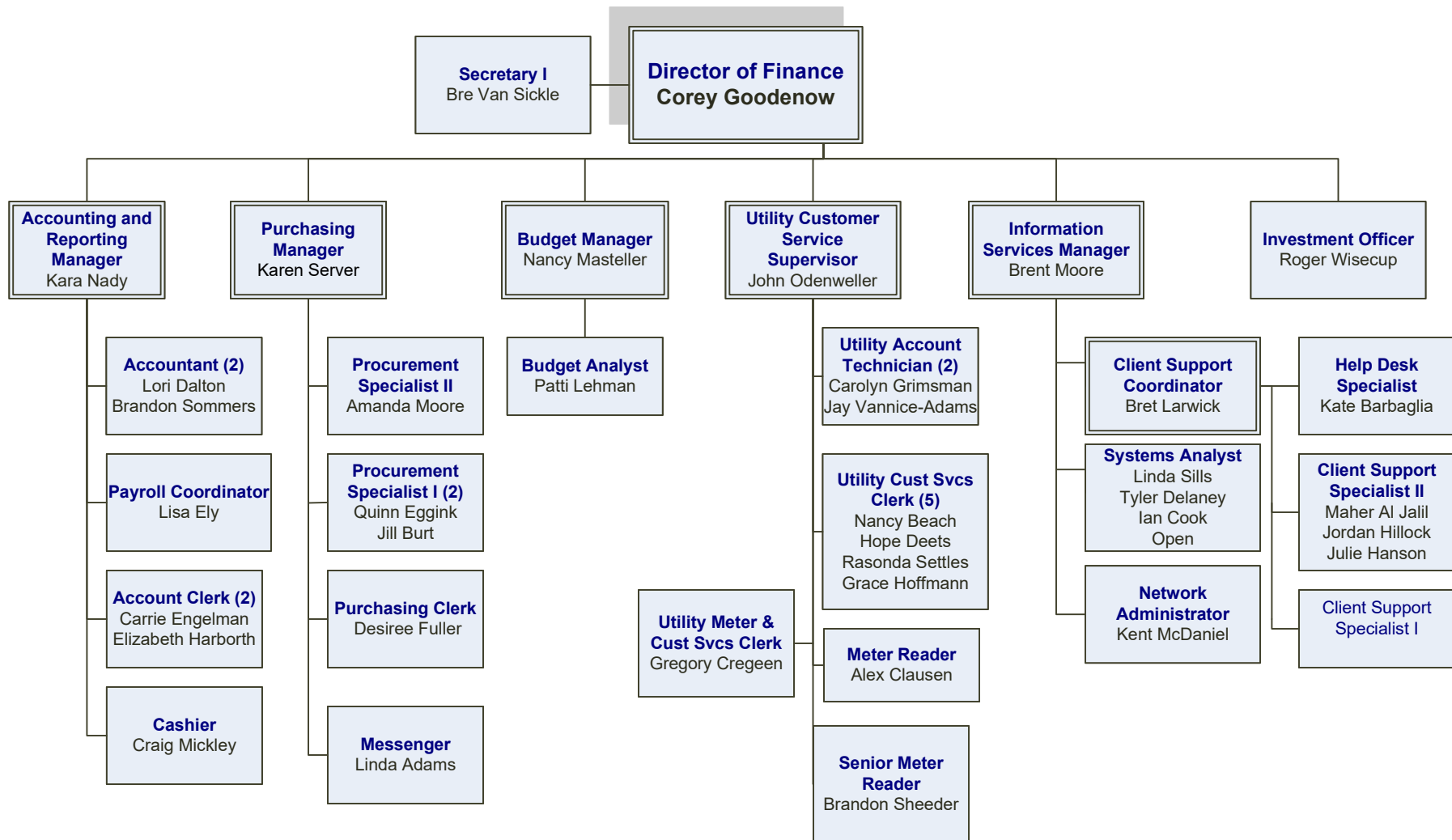


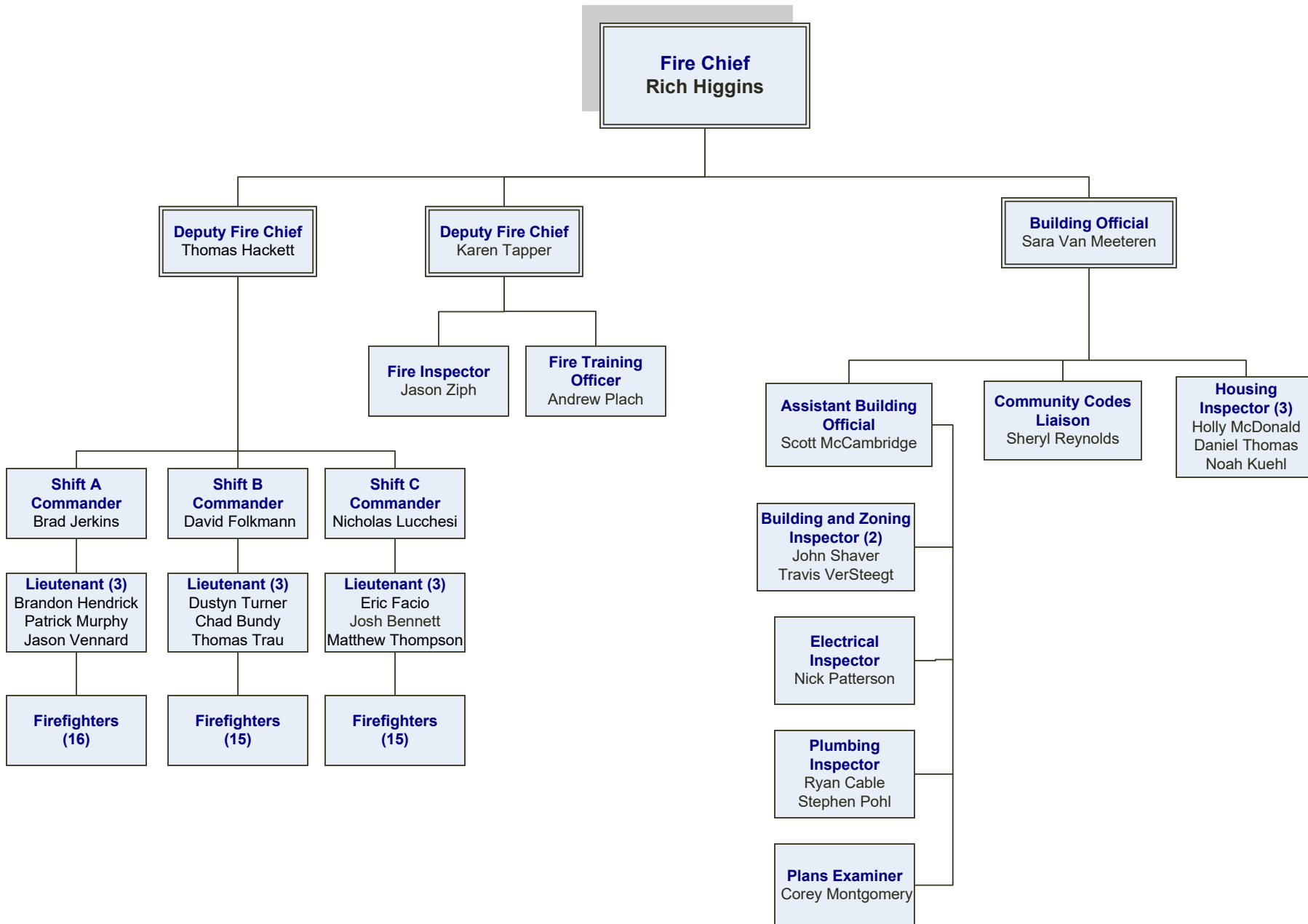
*DBE Liaison Officer

ELECTRIC SERVICES

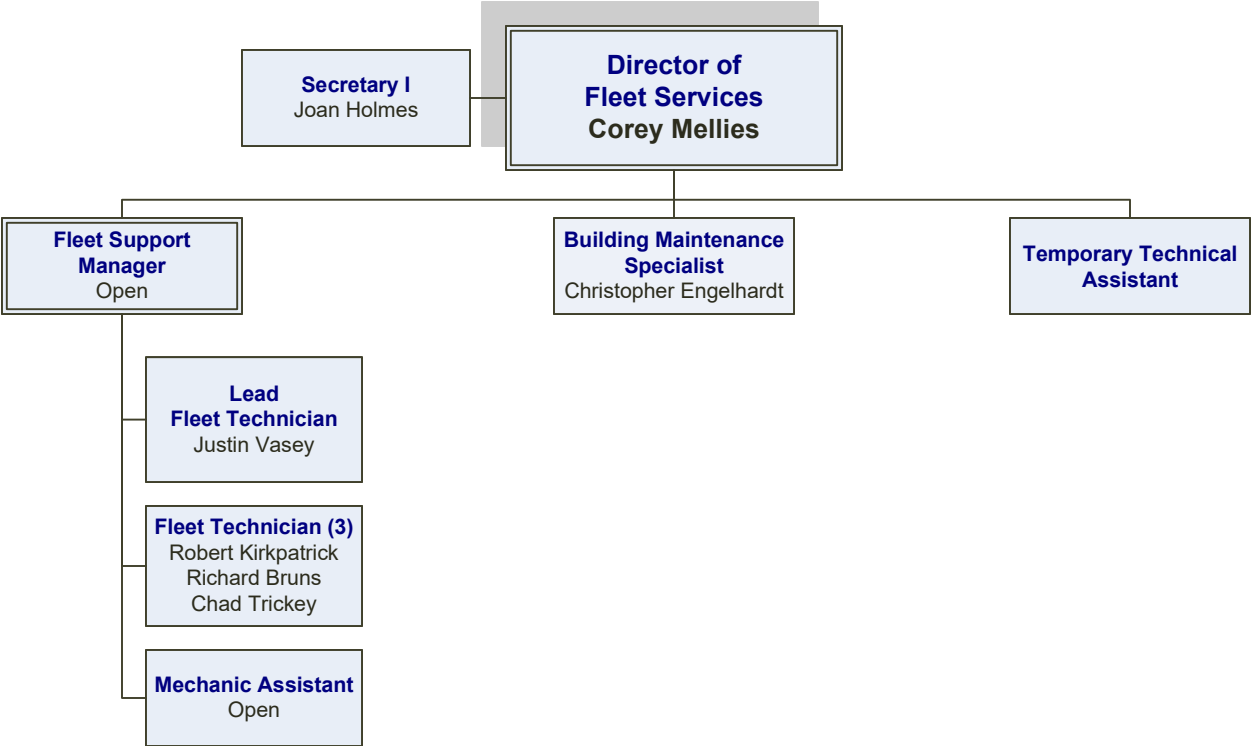


FINANCE





FLEET SERVICES



HUMAN RESOURCES

**Director of
Human Resources
Bethany Ballou**

Risk Manager
Bill Walton

**Health Promotion
Coordinator**
Kacie Schumann

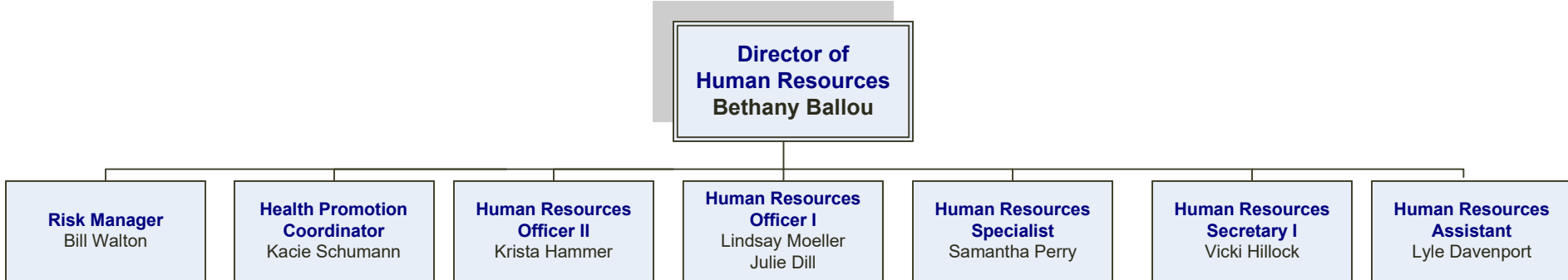
**Human Resources
Officer II**
Krista Hammer

**Human Resources
Officer I**
Lindsay Moeller
Julie Dill

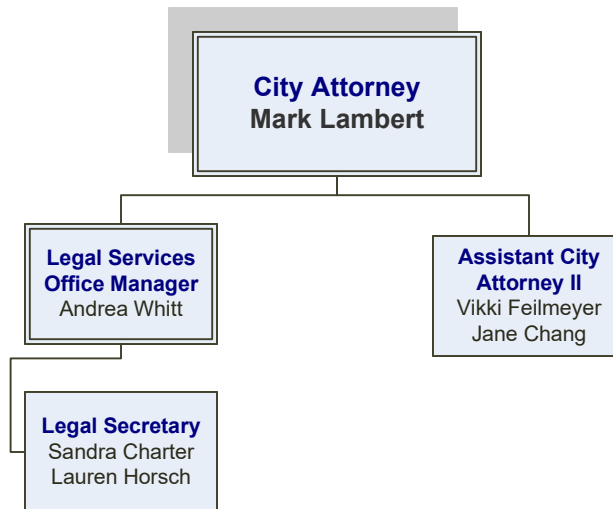
**Human Resources
Specialist**
Samantha Perry

**Human Resources
Secretary I**
Vicki Hillock

**Human Resources
Assistant**
Lyle Davenport



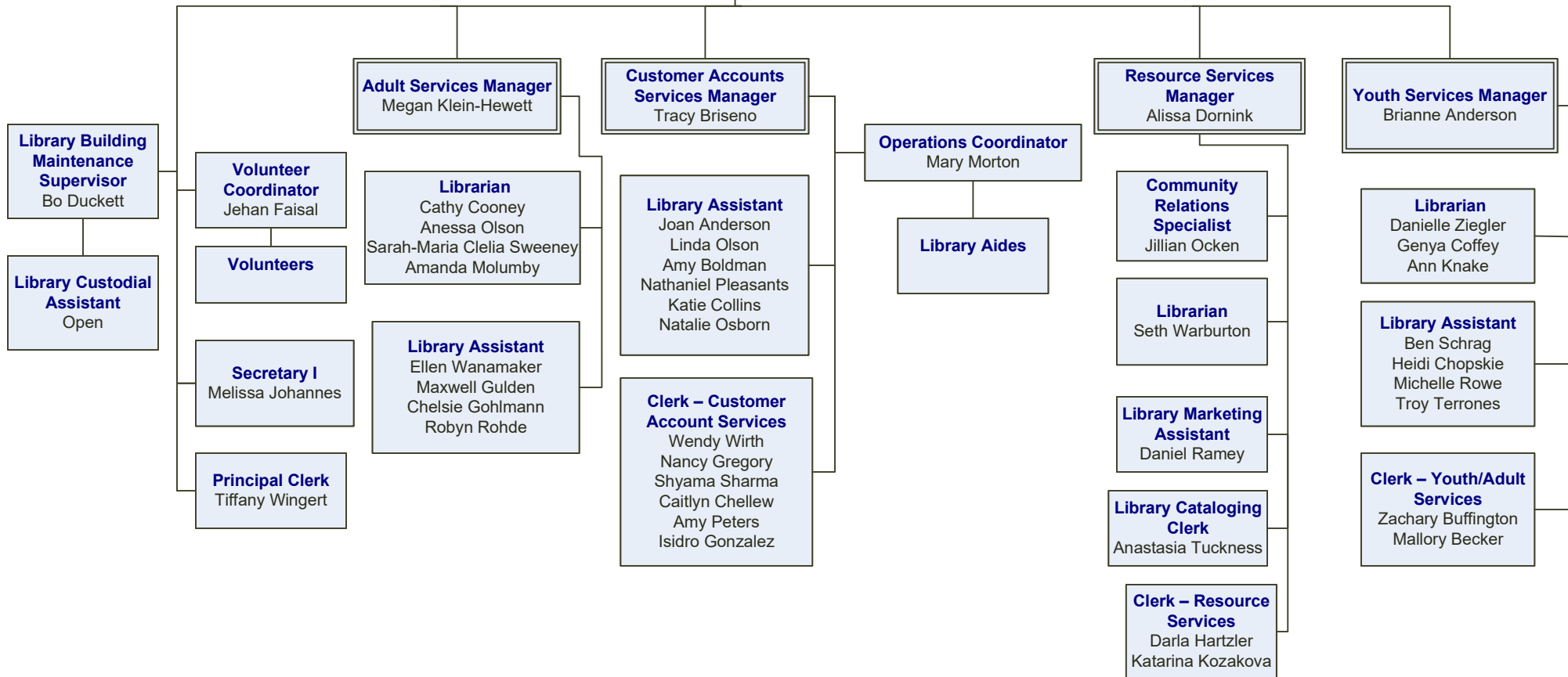
LEGAL



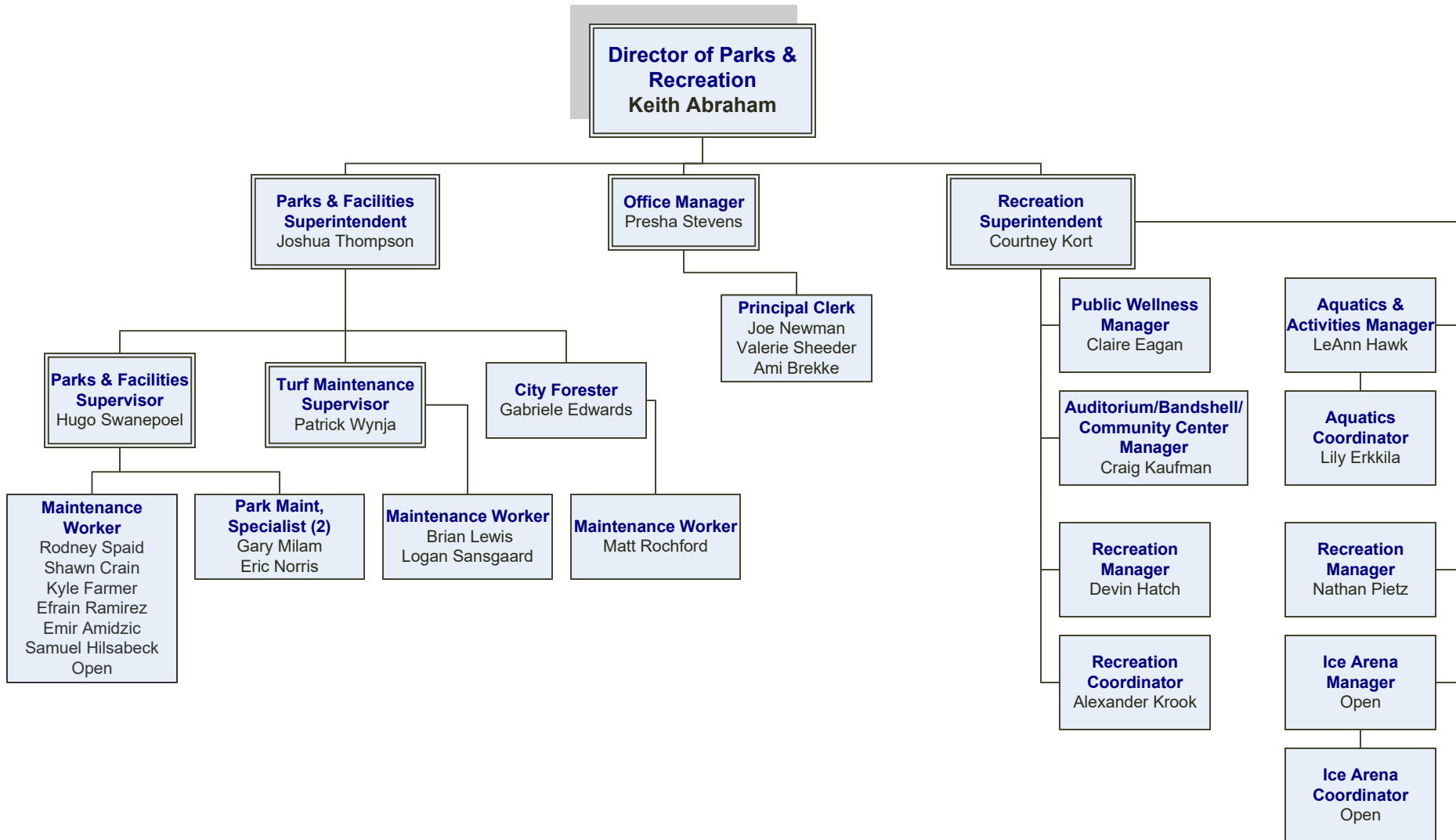
LIBRARY

BOARD OF TRUSTEES

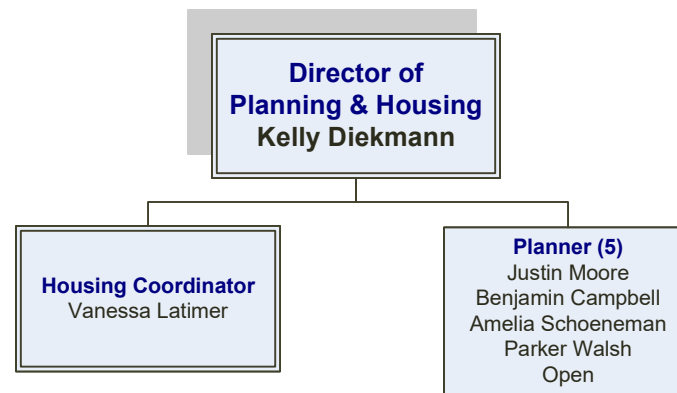
Library Director
Sheila Schofer



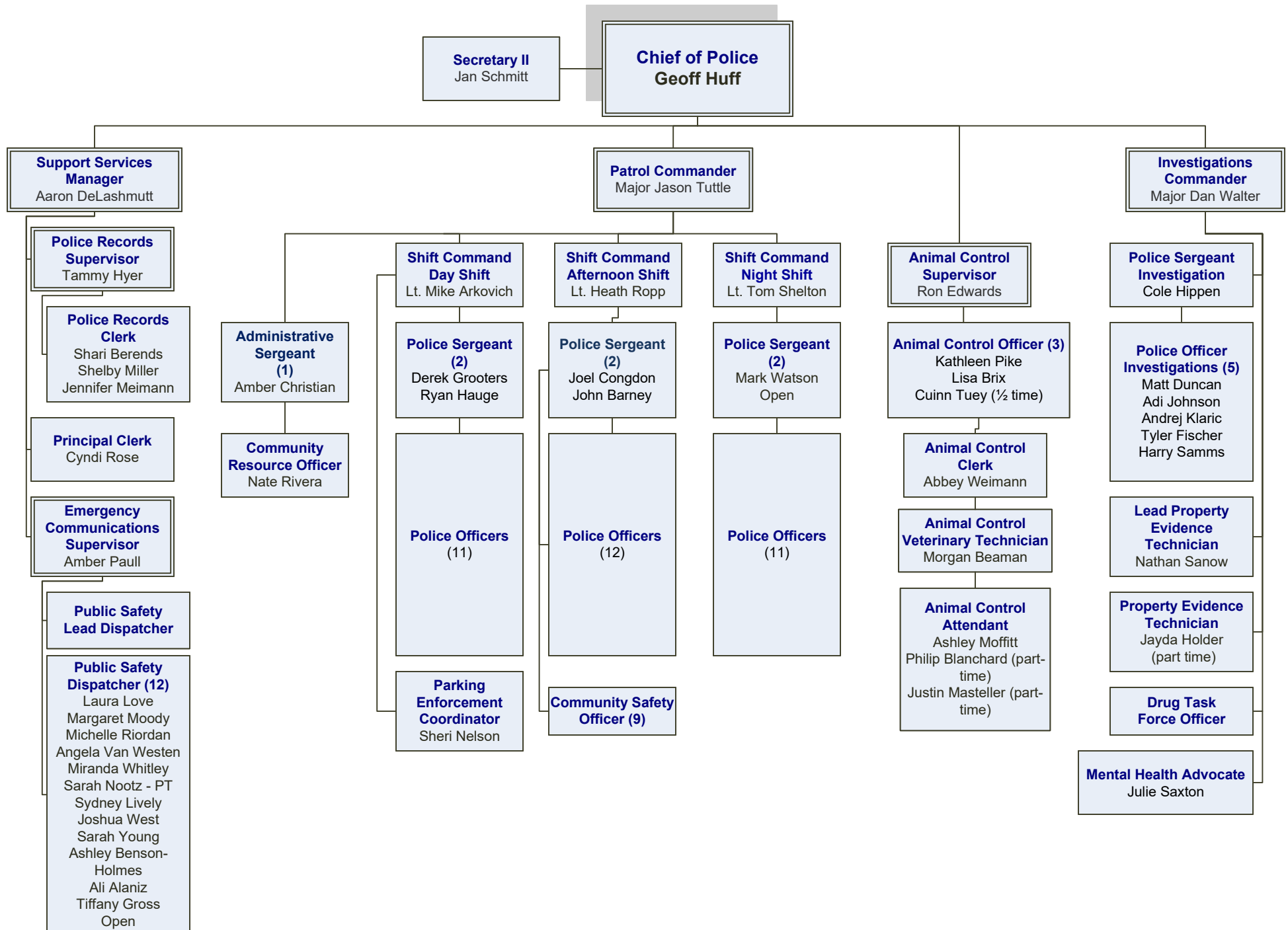
PARKS & RECREATION



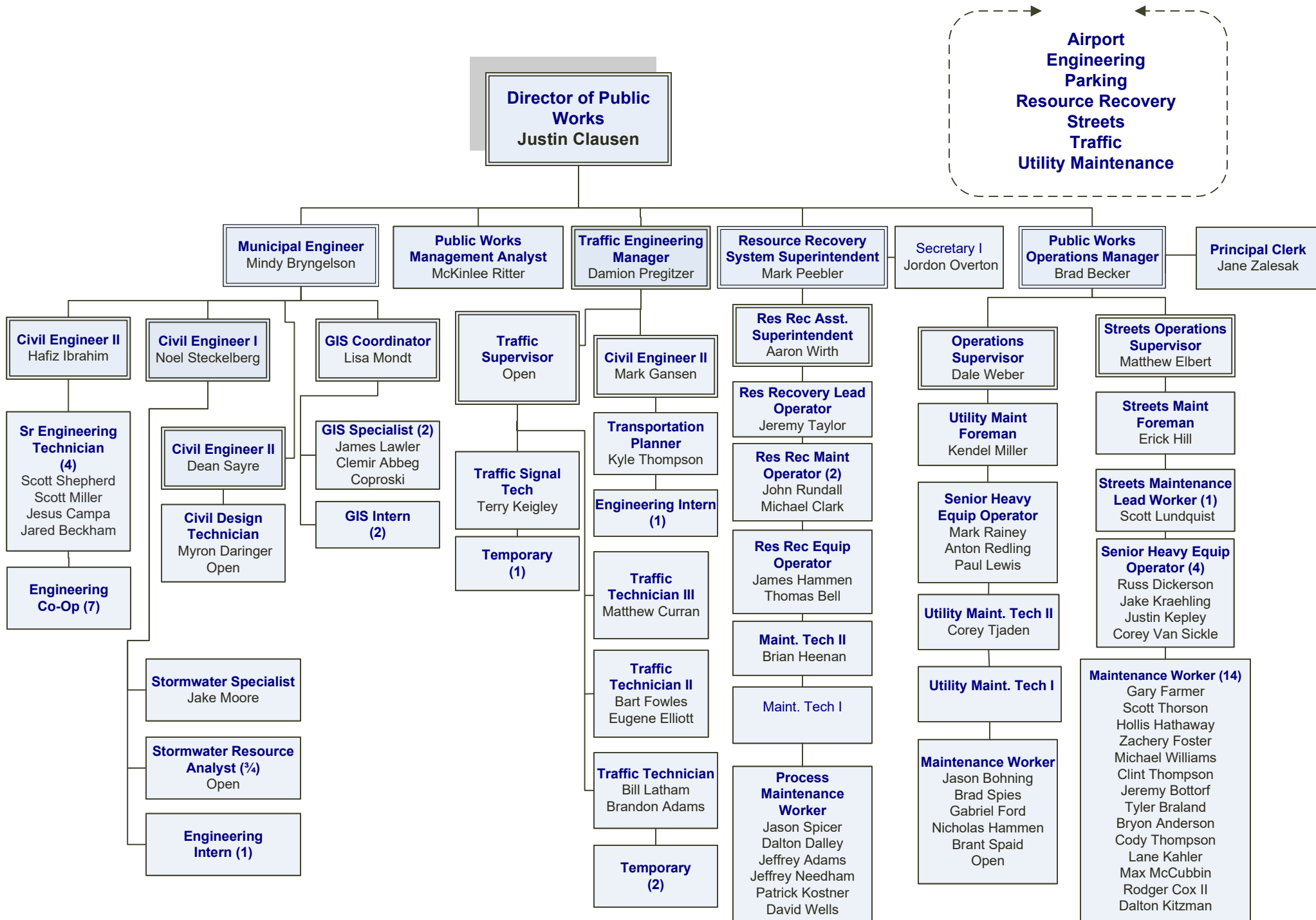
PLANNING & HOUSING



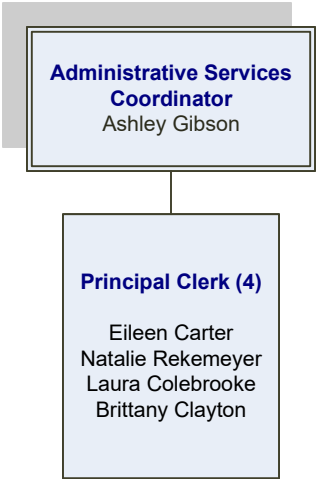
POLICE



PUBLIC WORKS



SHARED SUPPORT STAFF



WATER & POLLUTION CONTROL

