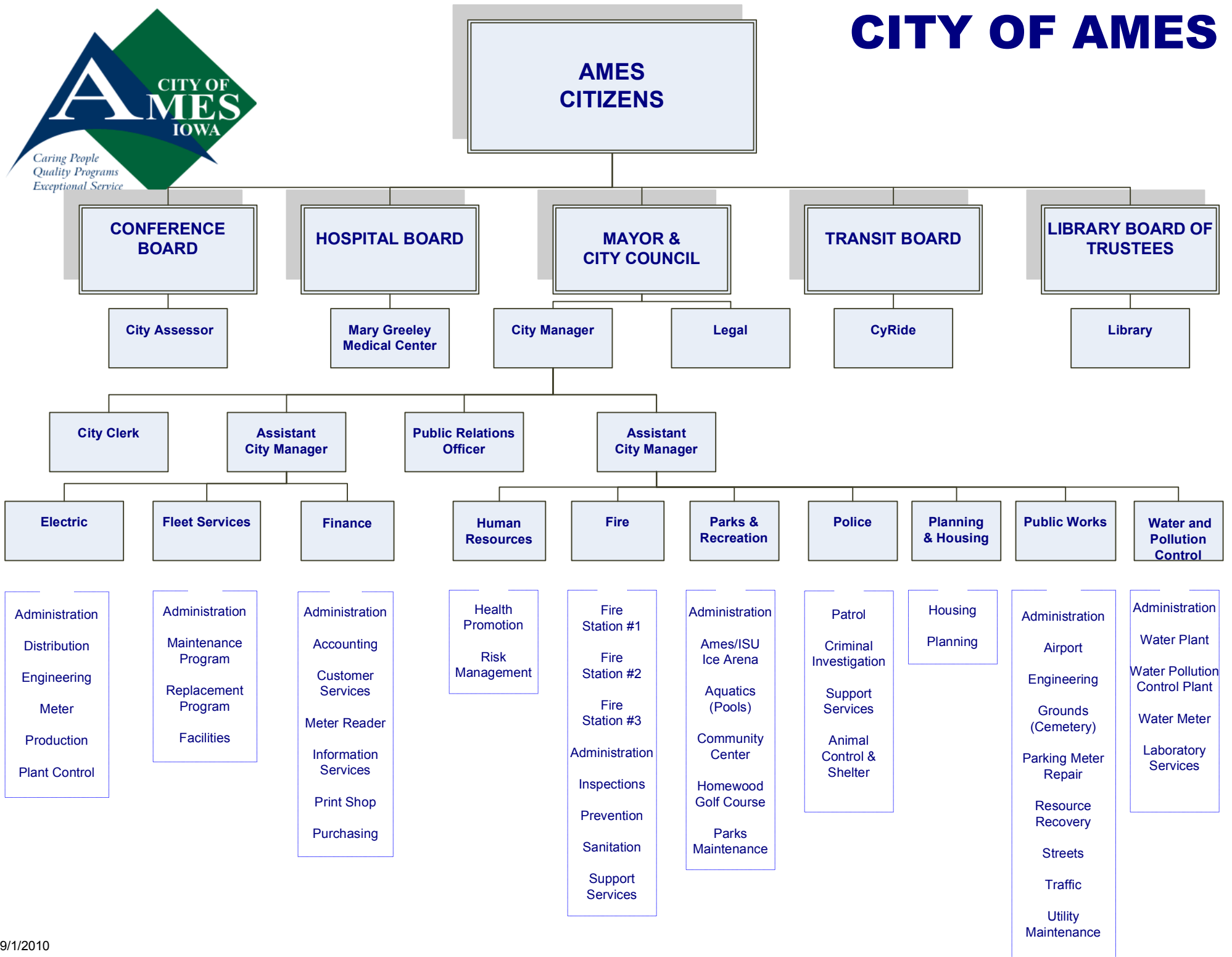


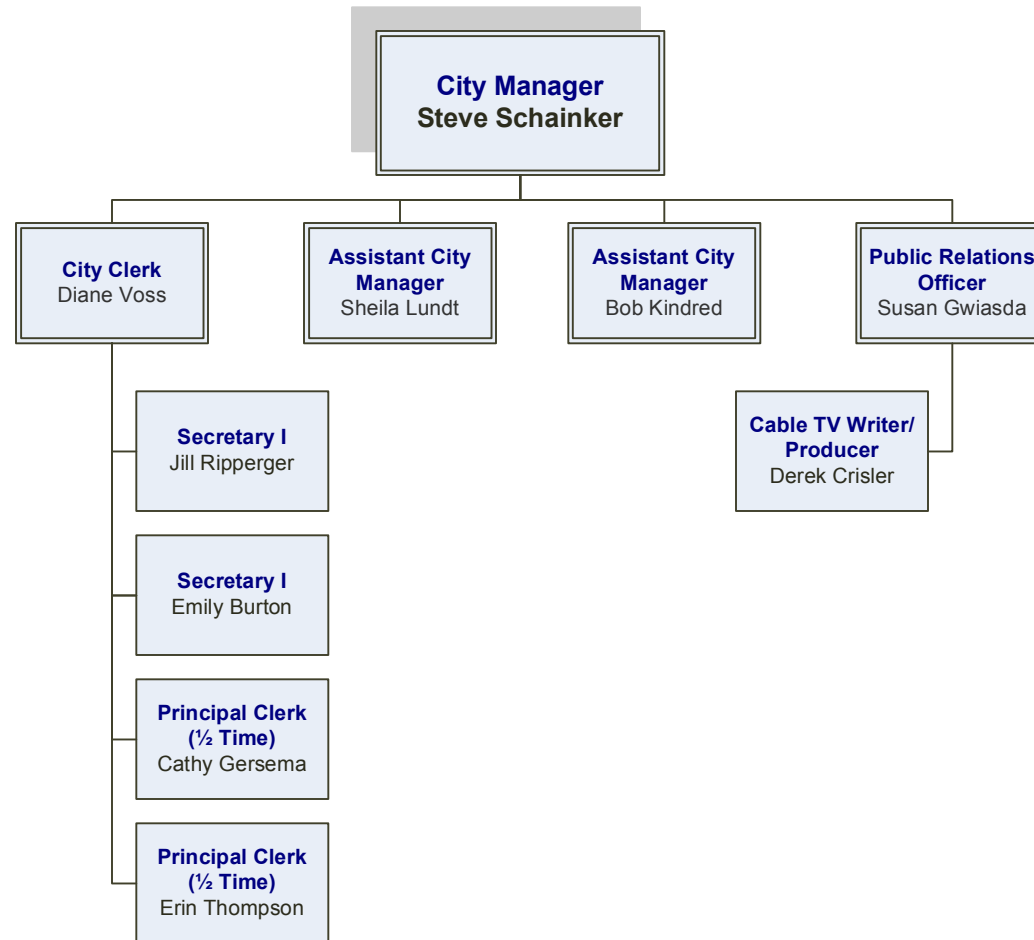


# CITY OF AMES



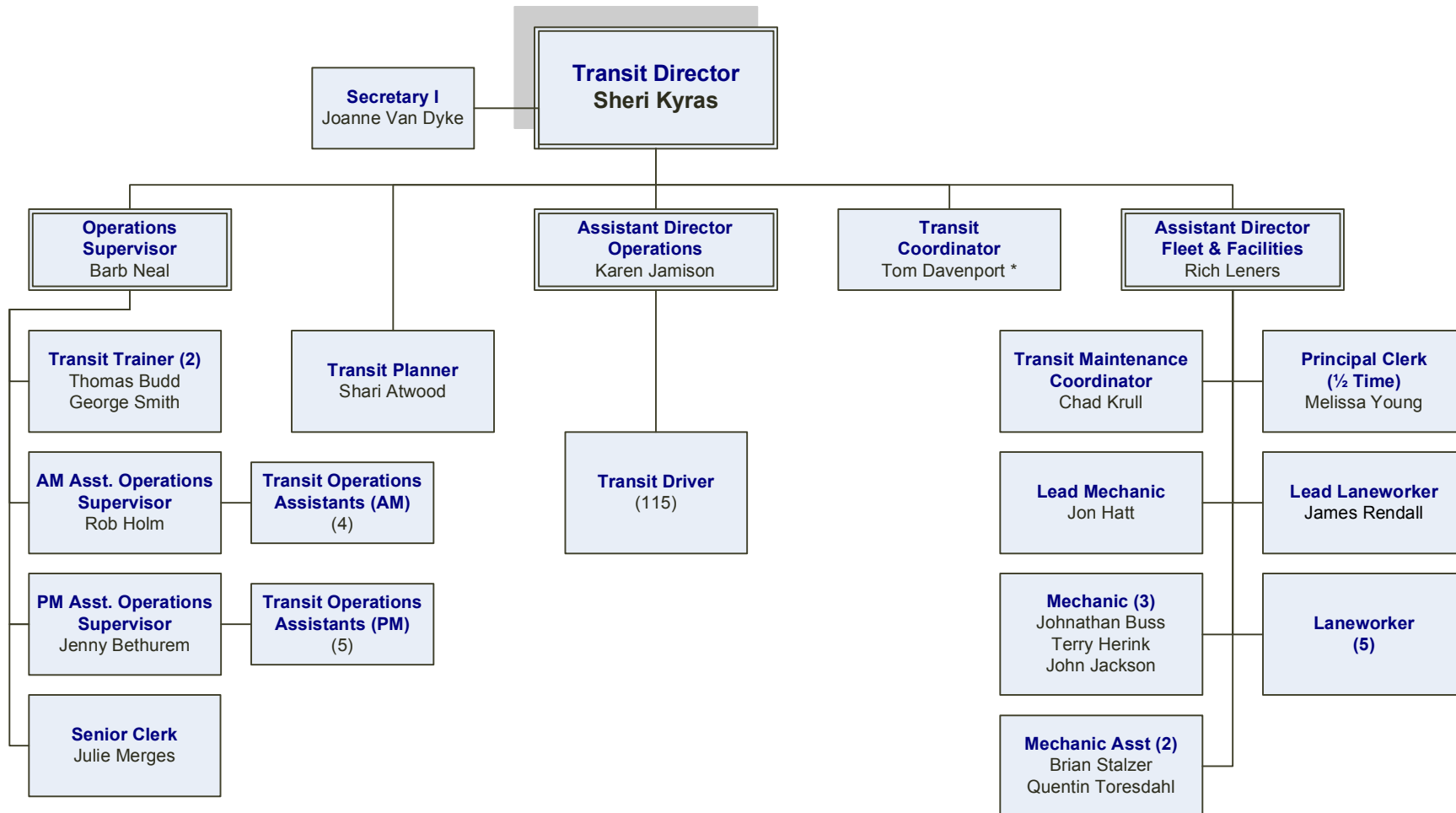


# CITY MANAGER





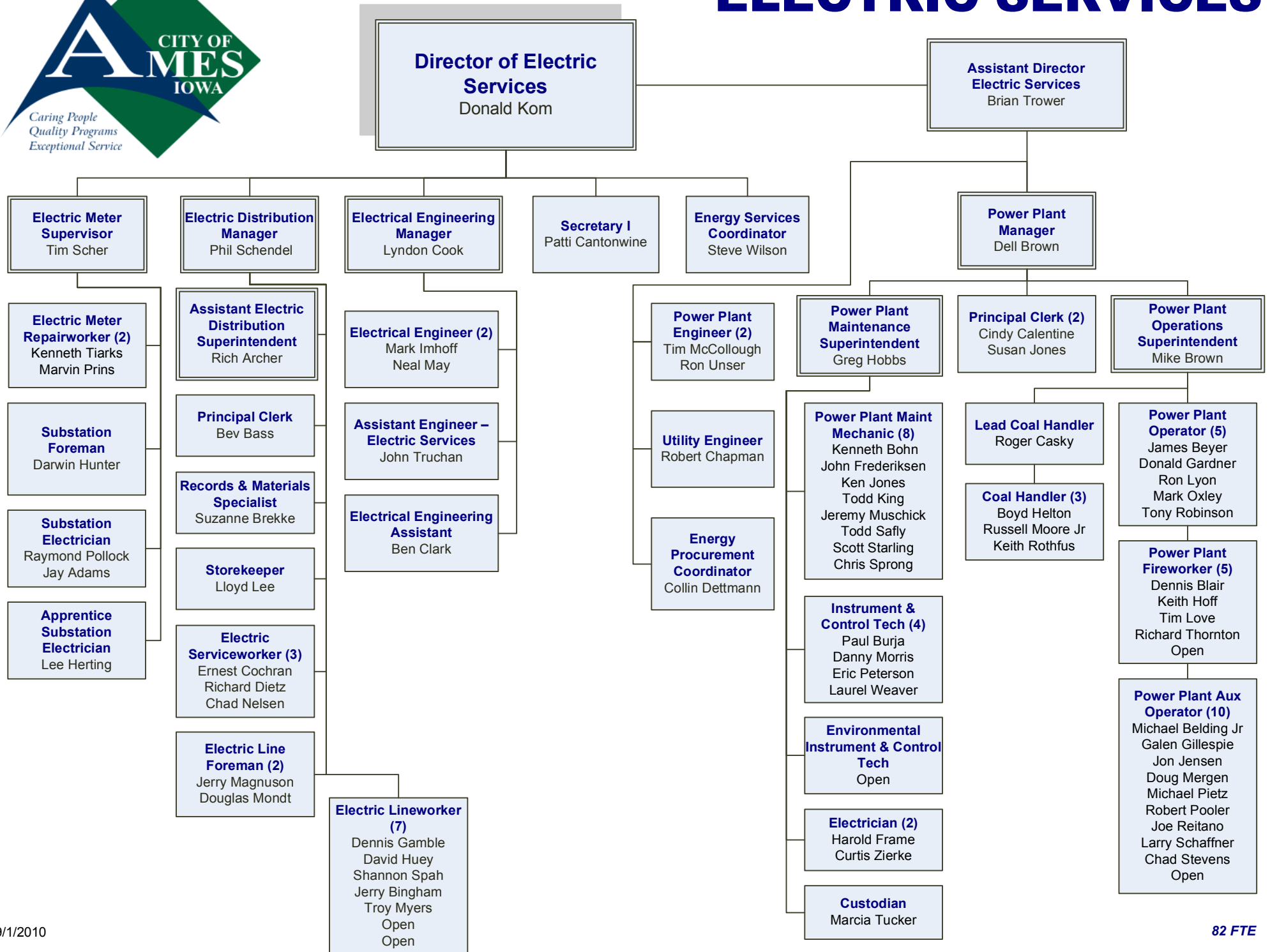
# CY RIDE



\*DBE Liaison Officer  
& EEO Officer

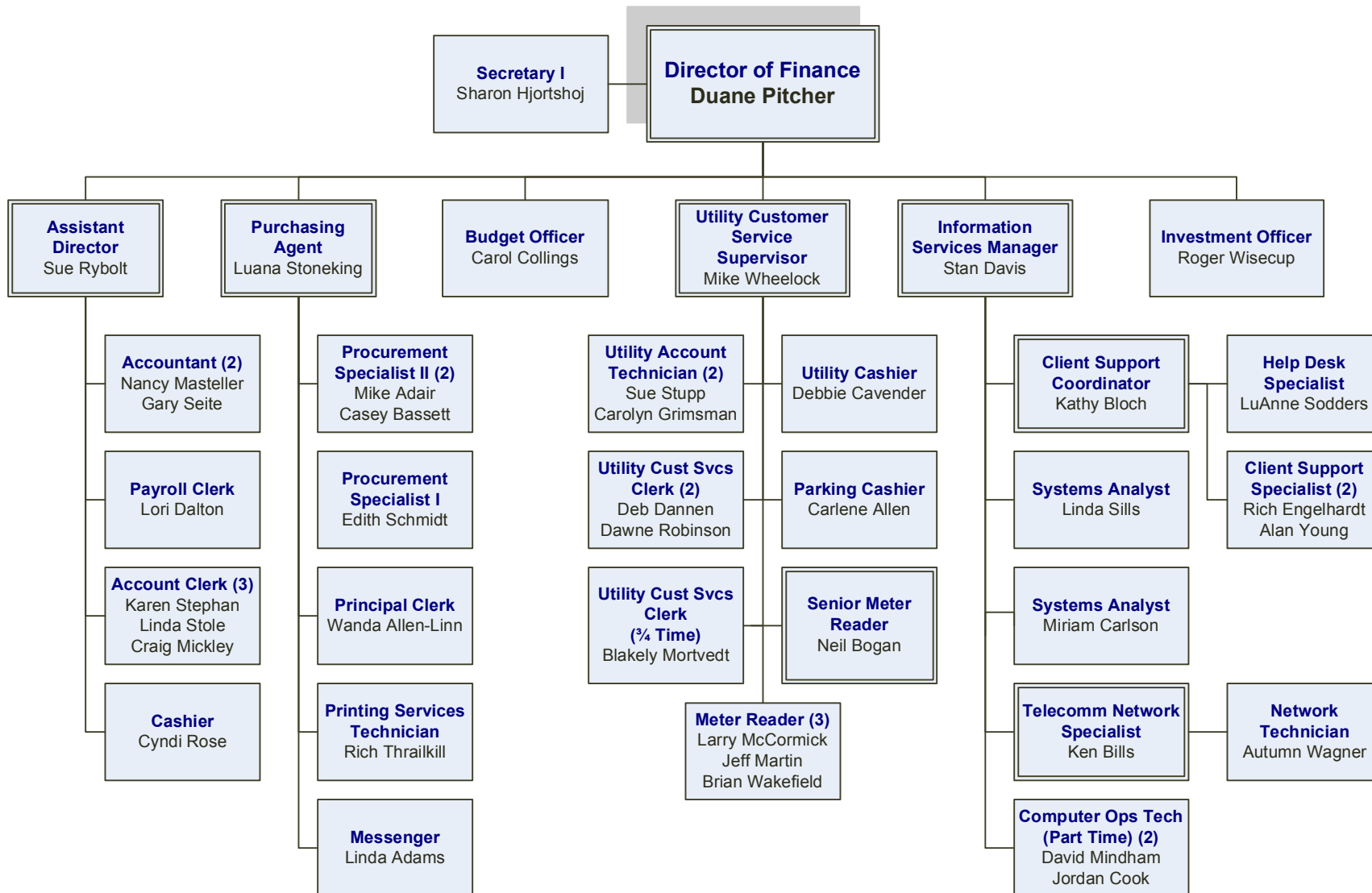


# ELECTRIC SERVICES



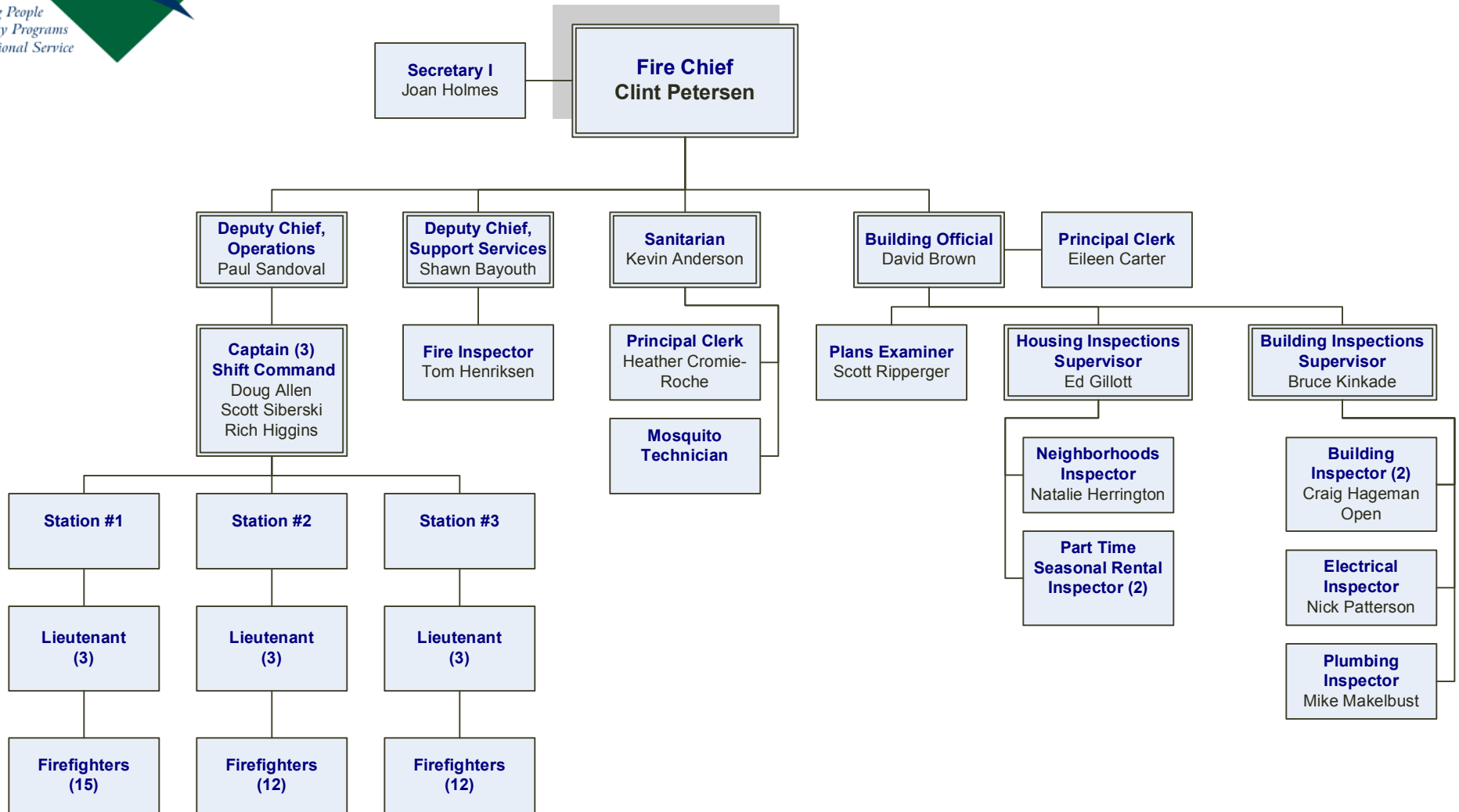


# FINANCE



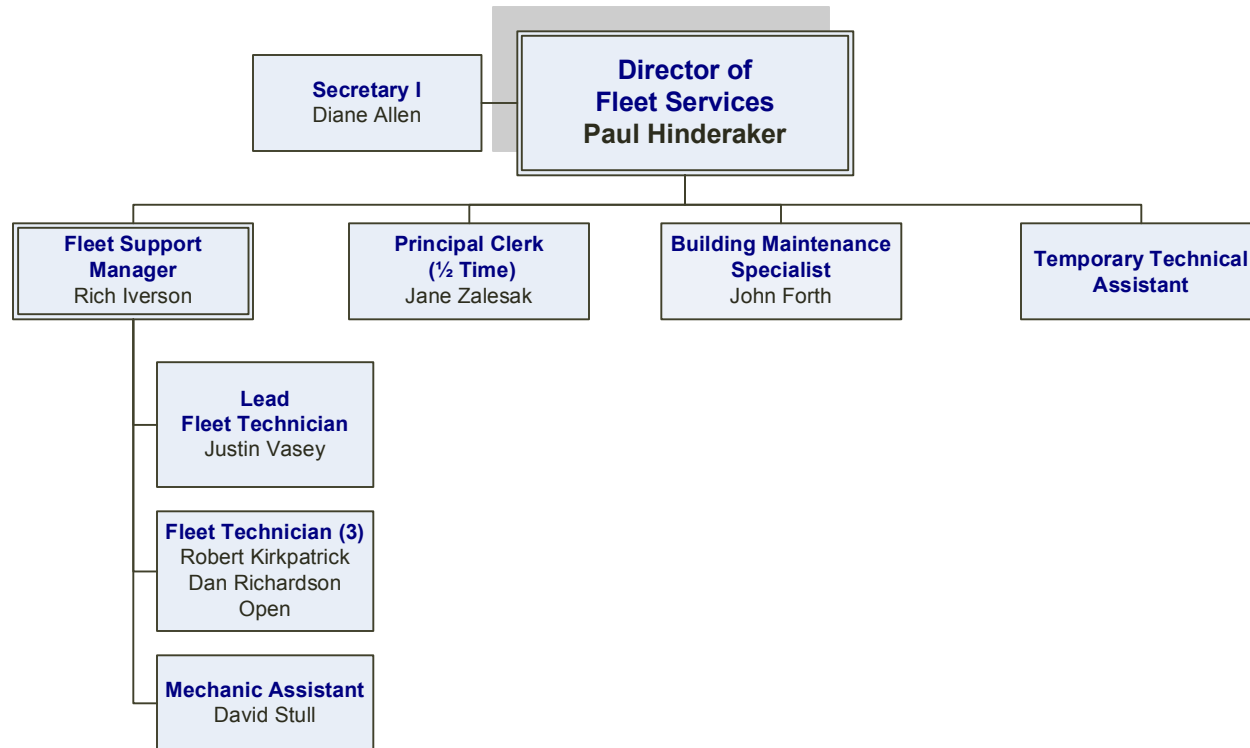


# FIRE



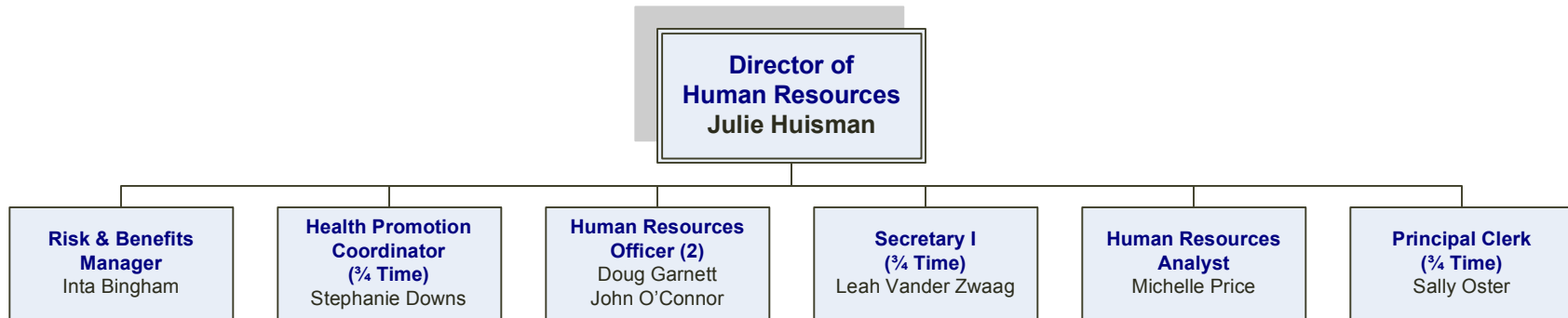


# FLEET SERVICES



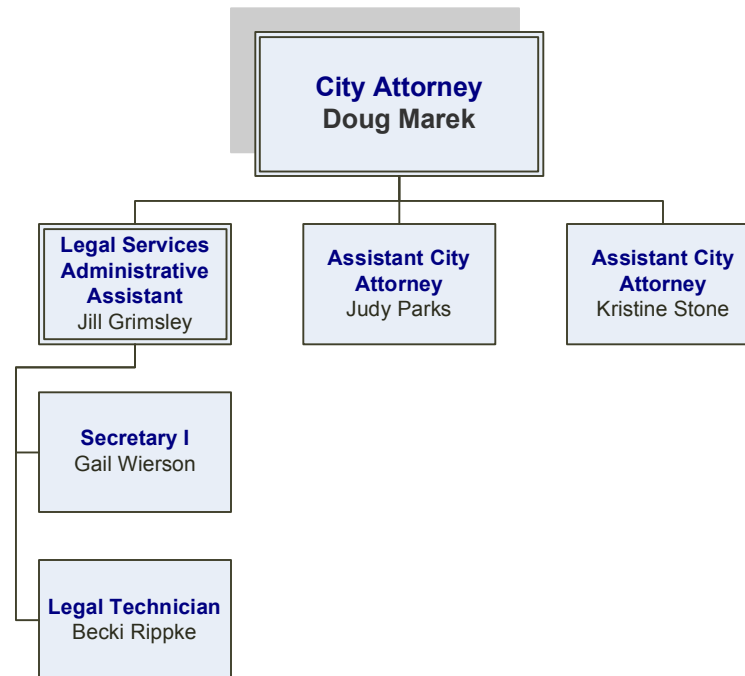


# HUMAN RESOURCES





# LEGAL

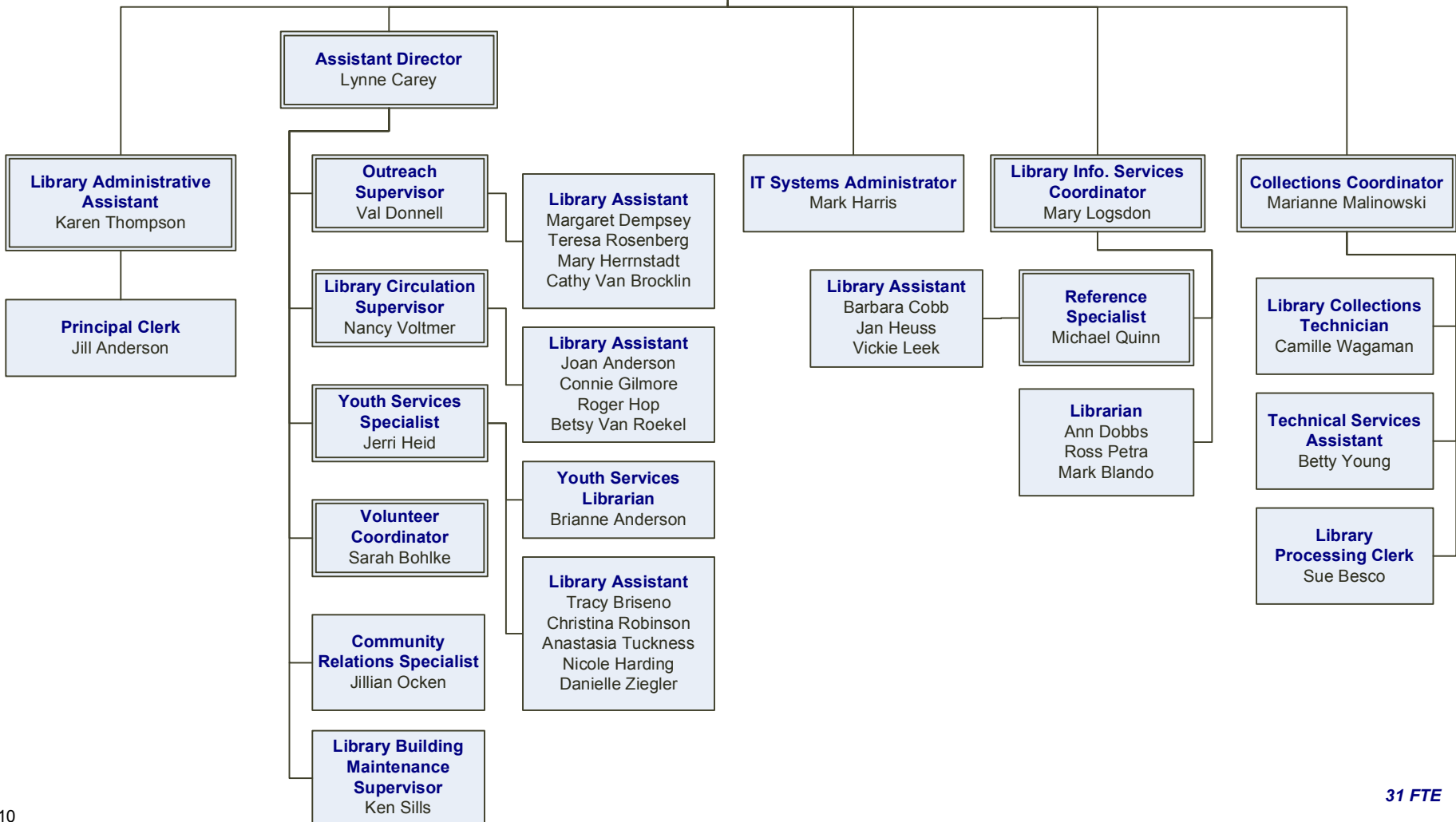




# LIBRARY

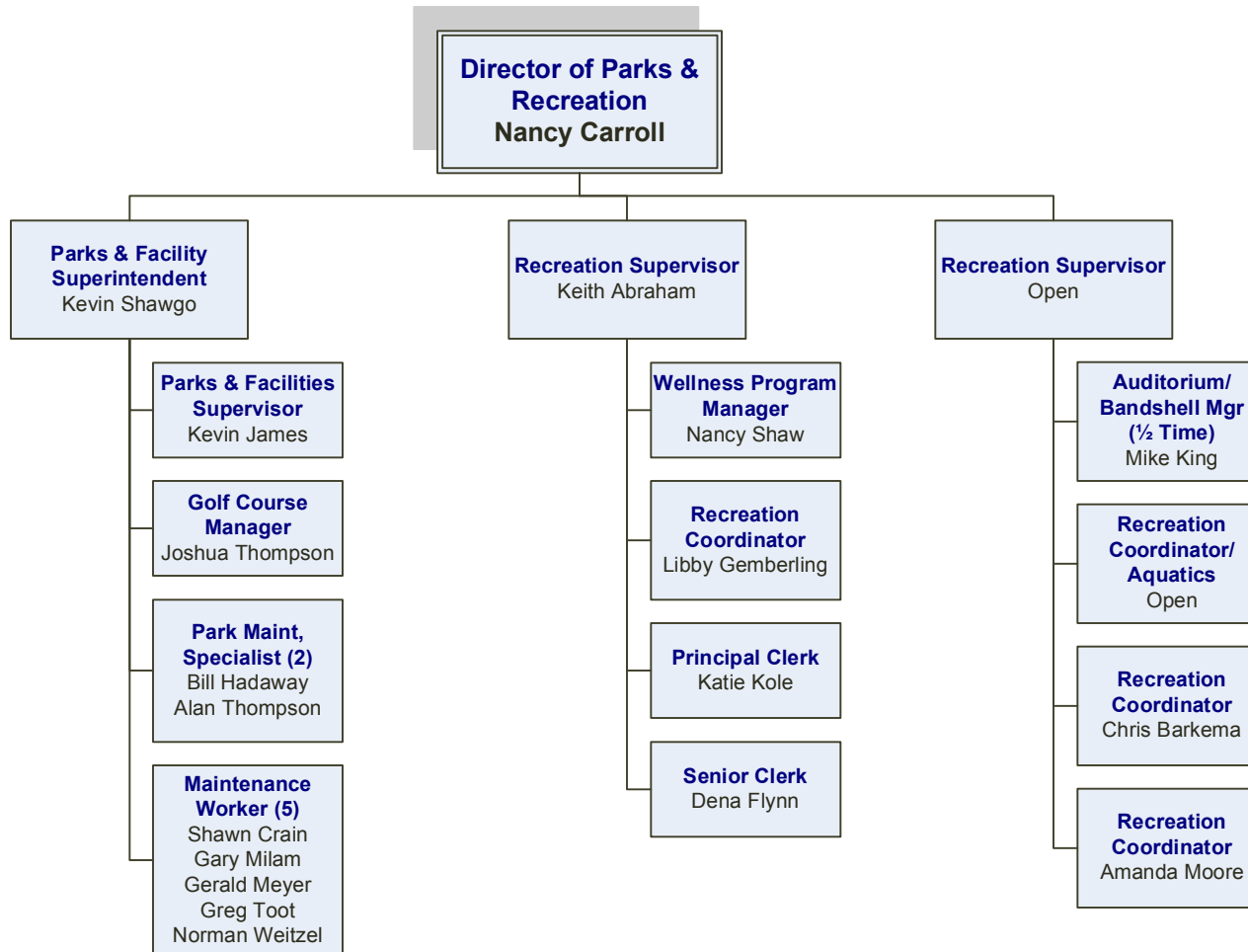
**BOARD OF TRUSTEES**

**Library Director  
Art Weeks**



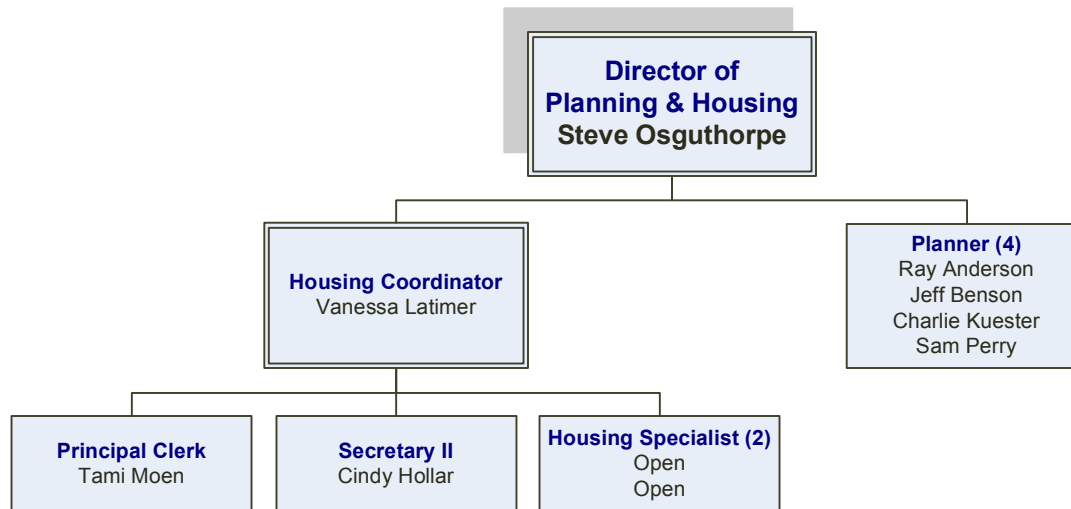


# PARKS & RECREATION



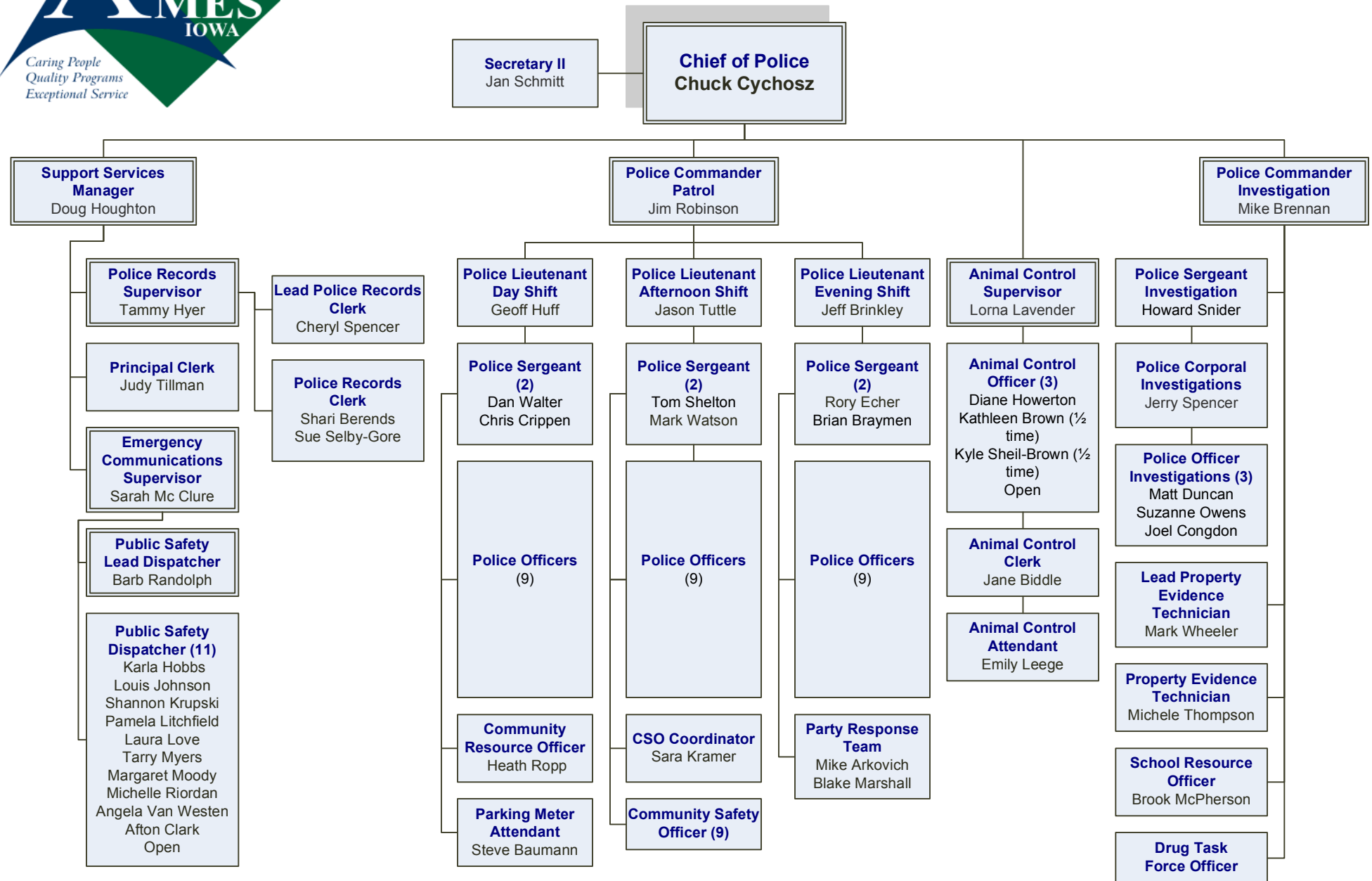


# PLANNING & HOUSING



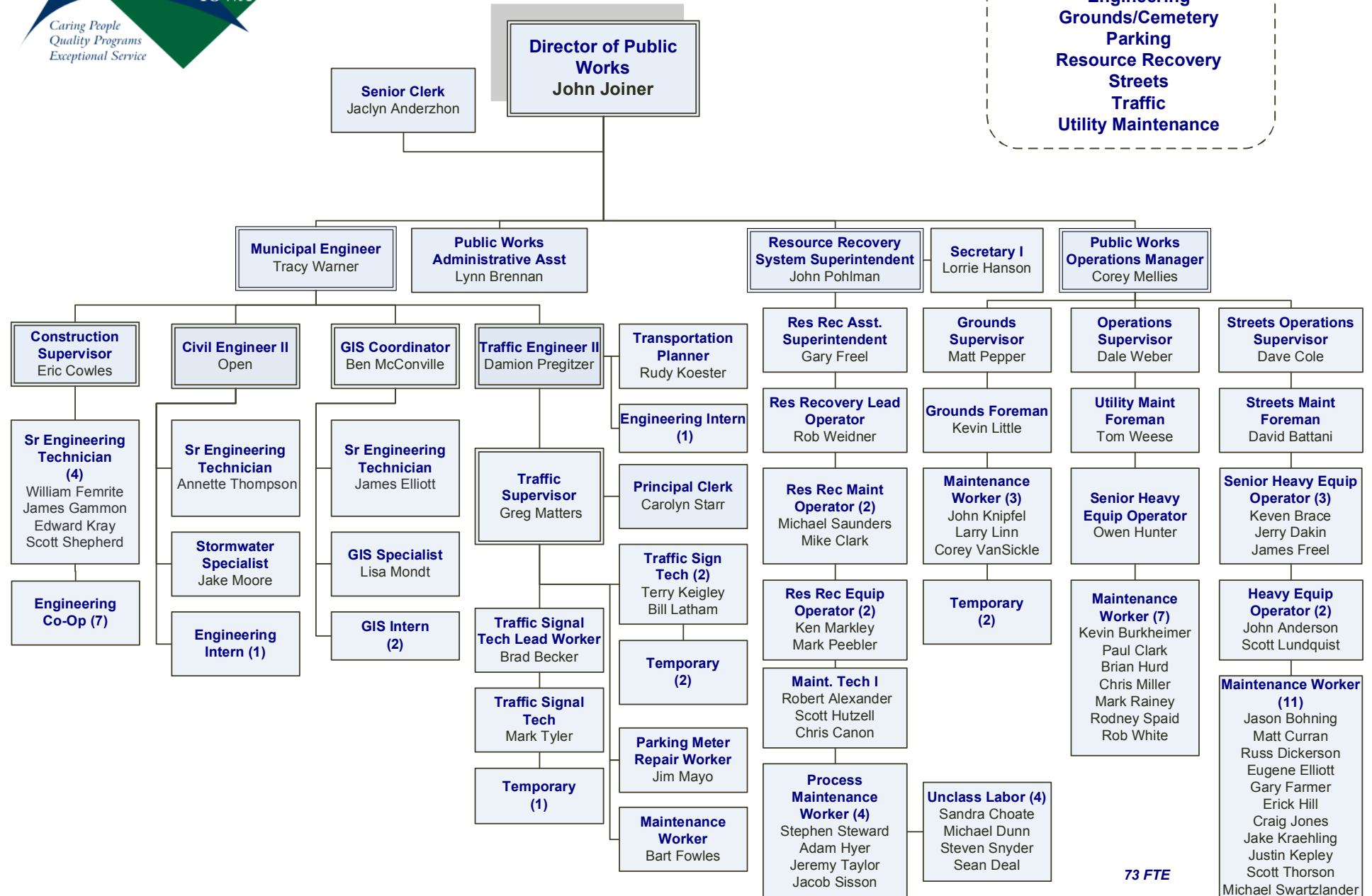


# POLICE





# PUBLIC WORKS



73 FTE



# WATER & POLLUTION CONTROL

