
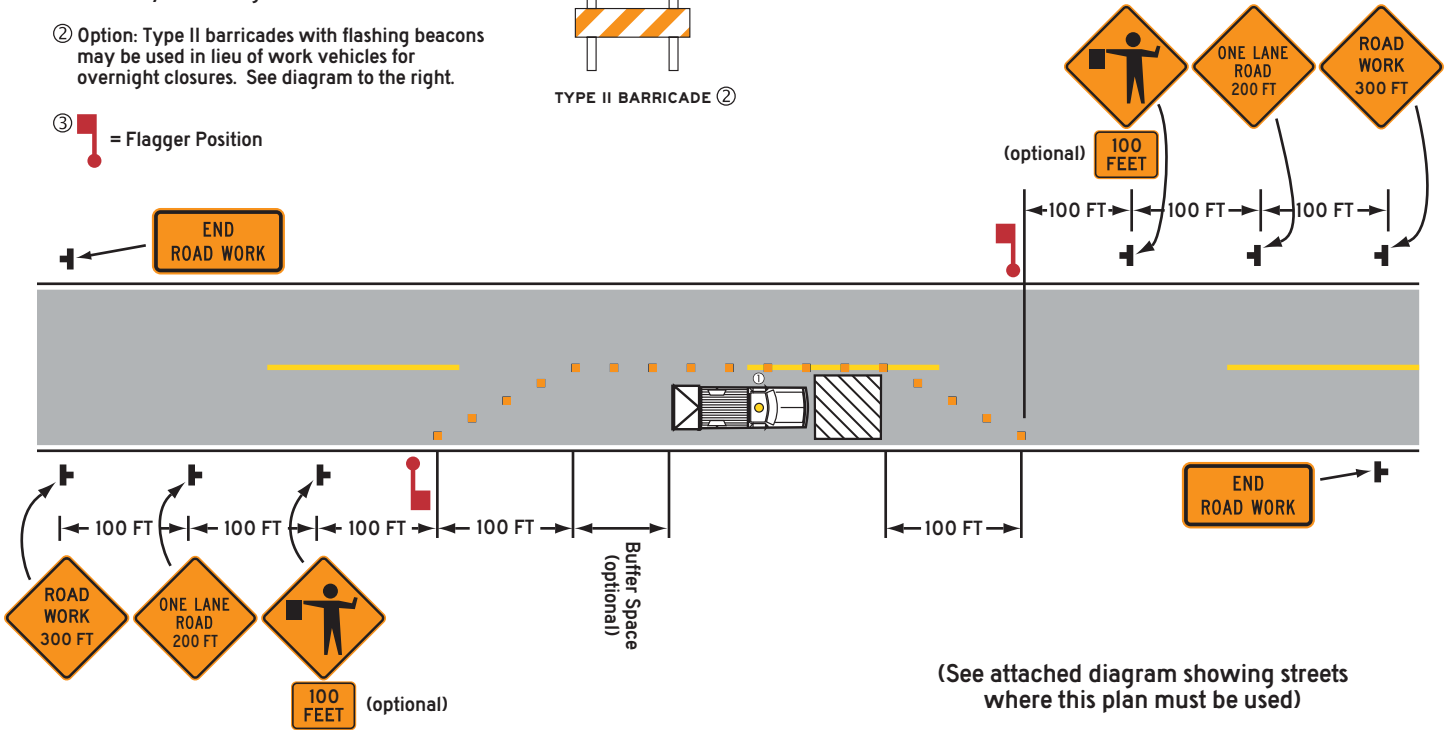
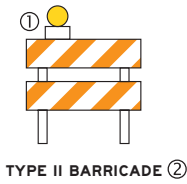


Plan A

Utility Work Zone on a Two-Lane Roadway with High Traffic Volumes (Flagger Controlled)

NOTES:

- ① Flashing or Steady Burn warning lights are necessary for overnight closures.
- ② Option: Type II barricades with flashing beacons may be used in lieu of work vehicles for overnight closures. See diagram to the right.
- ③  = Flagger Position



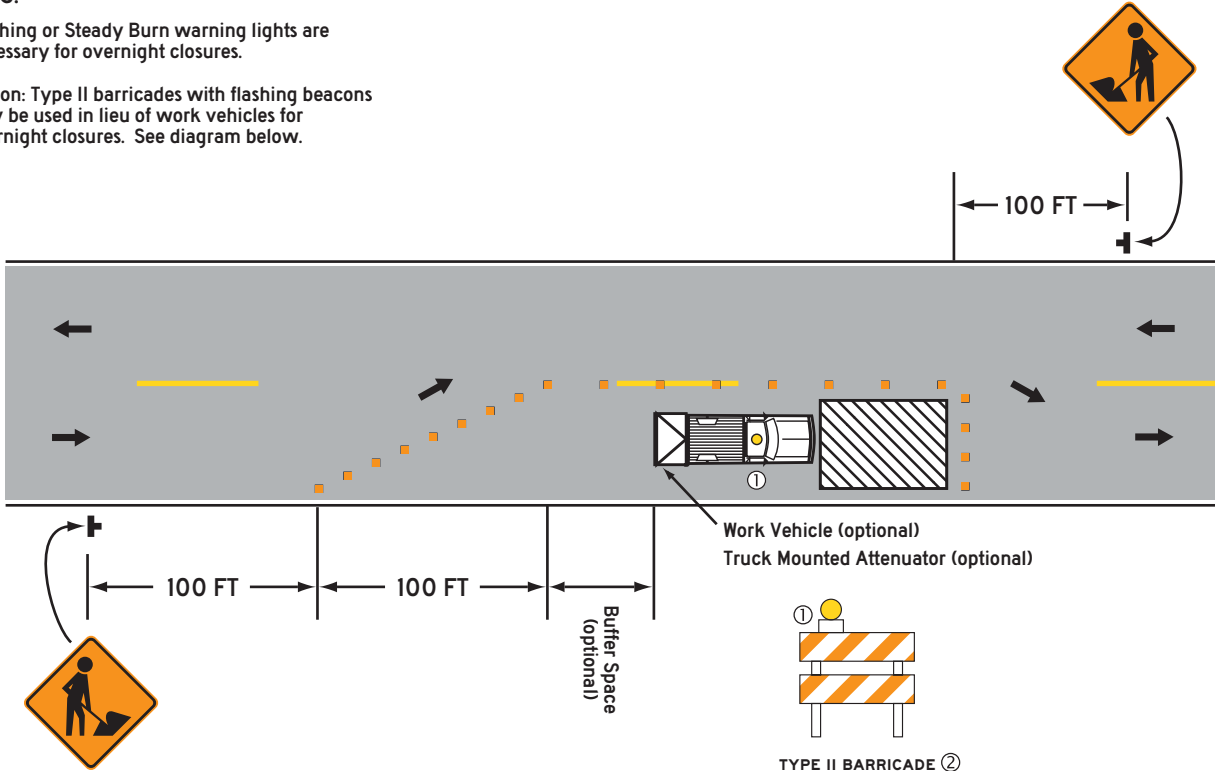
(See attached diagram showing streets where this plan must be used)

Plan B

Utility Work Zone on a Two-Lane Residential Street with Low Traffic Volumes (Self-Regulating)

NOTES:

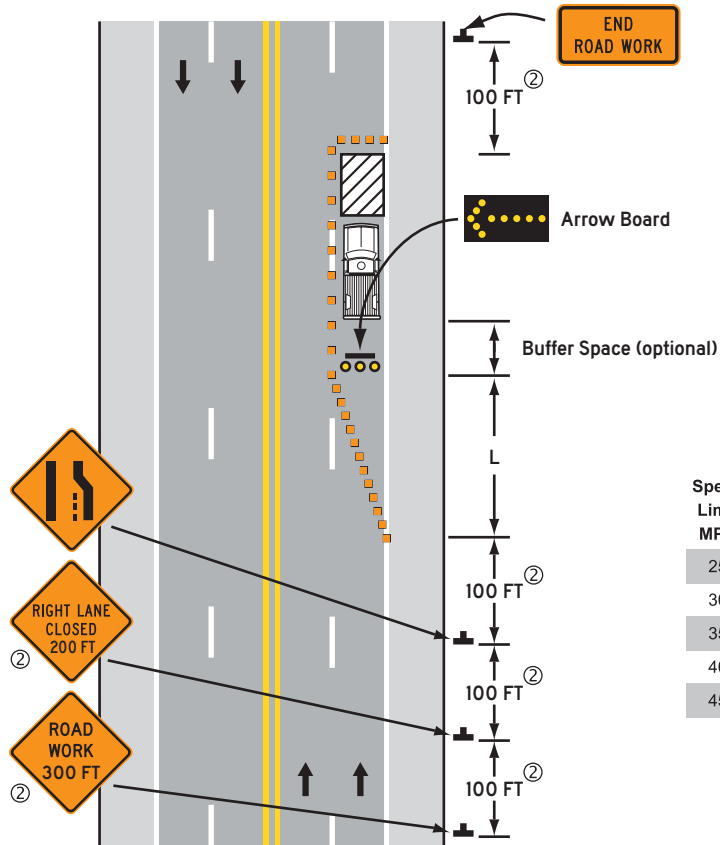
- ① Flashing or Steady Burn warning lights are necessary for overnight closures.
- ② Option: Type II barricades with flashing beacons may be used in lieu of work vehicles for overnight closures. See diagram below.



TYPE II BARRICADE ②

Plan C

Traffic Control for One-Lane Closure on Four-Lane Arterial Street



- NOTES:**
- ① Flashing or Steady Burn warning lights are necessary for overnight closures.
 - ② For streets with speeds 45 mph and over, sign spacing shall be 350 ft, signs must have correct legends
 - ③ Work area must be enclosed with barricades, fencing, or a combination of the two.
 - ④ Contact the Engineering Division at 239-5275 if additional lane closures are require.
 - ⑤ L = Length of Taper - Refer to table Below

Taper Lengths For Lane Closure^⑤

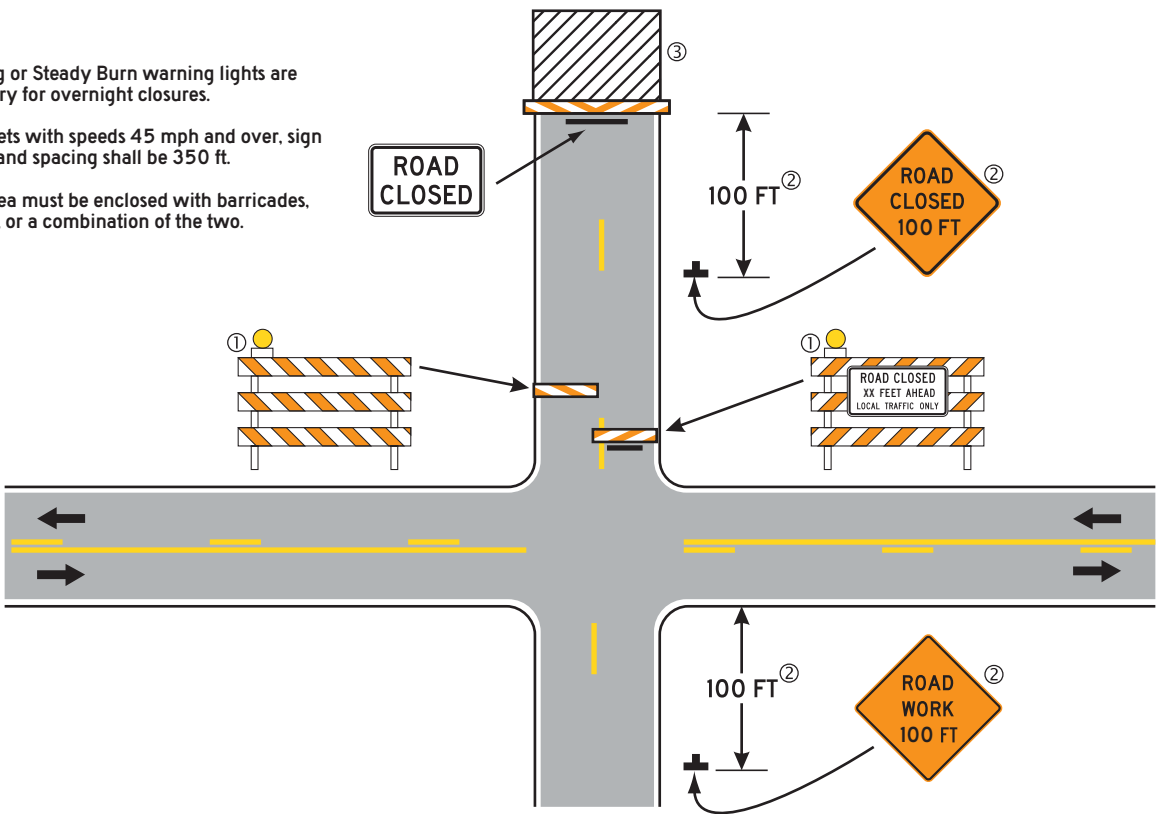
Speed Limit MPH	Taper Length	Number of Devices for Taper	Spacing of Devices for Taper
25	125	6	25
30	180	7	30
35	245	8	35
40	320	9	40
45	540	13	45

(See attached diagram showing streets where this plan must be used)

Plan D

Closing of Local Streets

- NOTES:**
- ① Flashing or Steady Burn warning lights are necessary for overnight closures.
 - ② For streets with speeds 45 mph and over, sign legend and spacing shall be 350 ft.
 - ③ Work area must be enclosed with barricades, fencing, or a combination of the two.

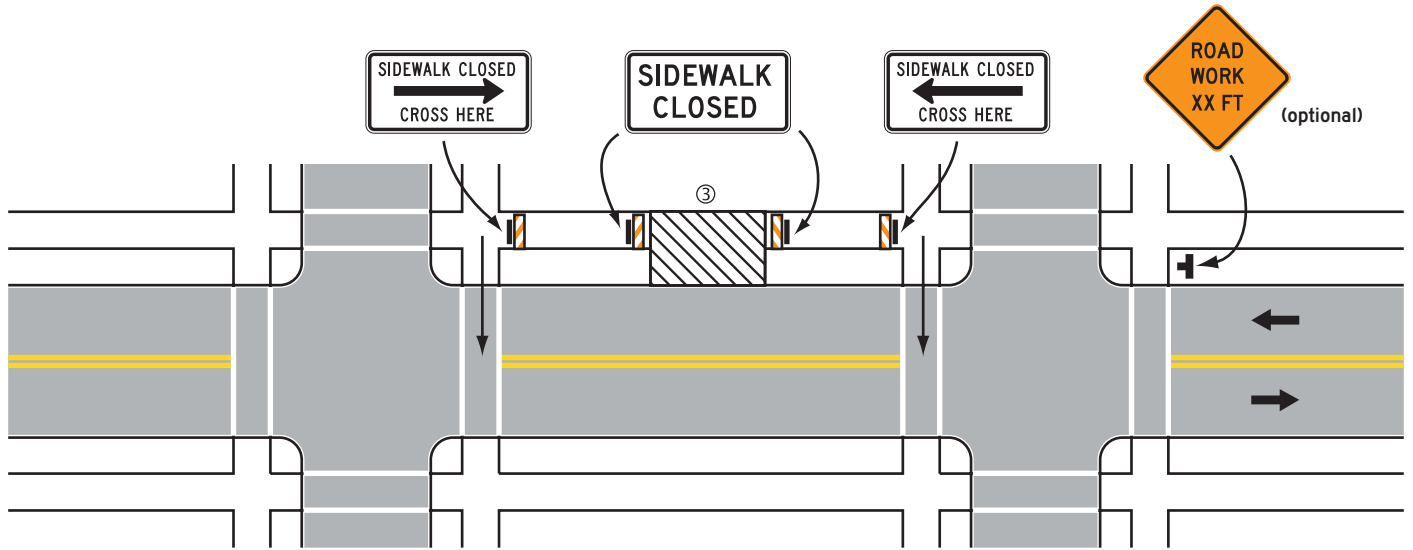
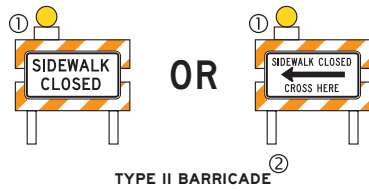


Plan E

Sidewalk Detour for work being done within the Right-of-Way

NOTES:

- ① Flashing or Steady Burn warning lights are necessary for overnight closures.
- ② Signs shall be mounted on Type II barricades as shown in the diagram to the right.
- ③ Work area must be enclosed with barricades, fencing, or a combination of the two.

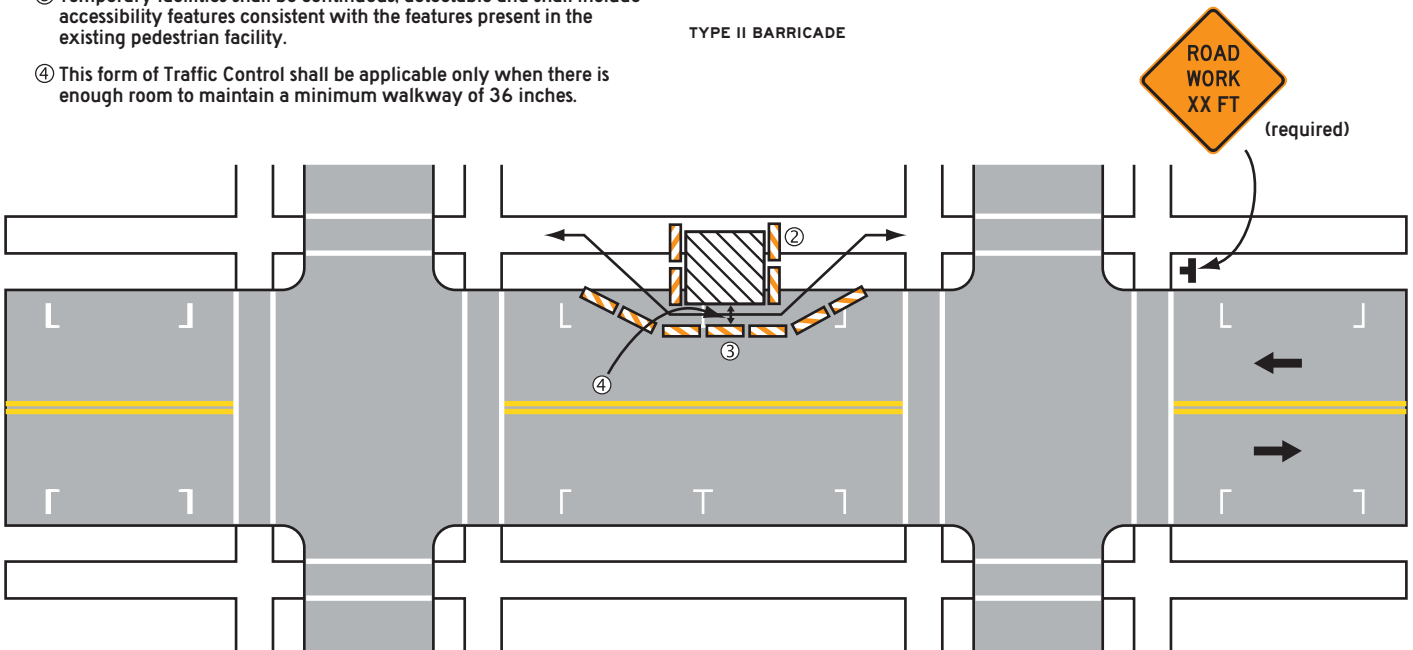


Plan F

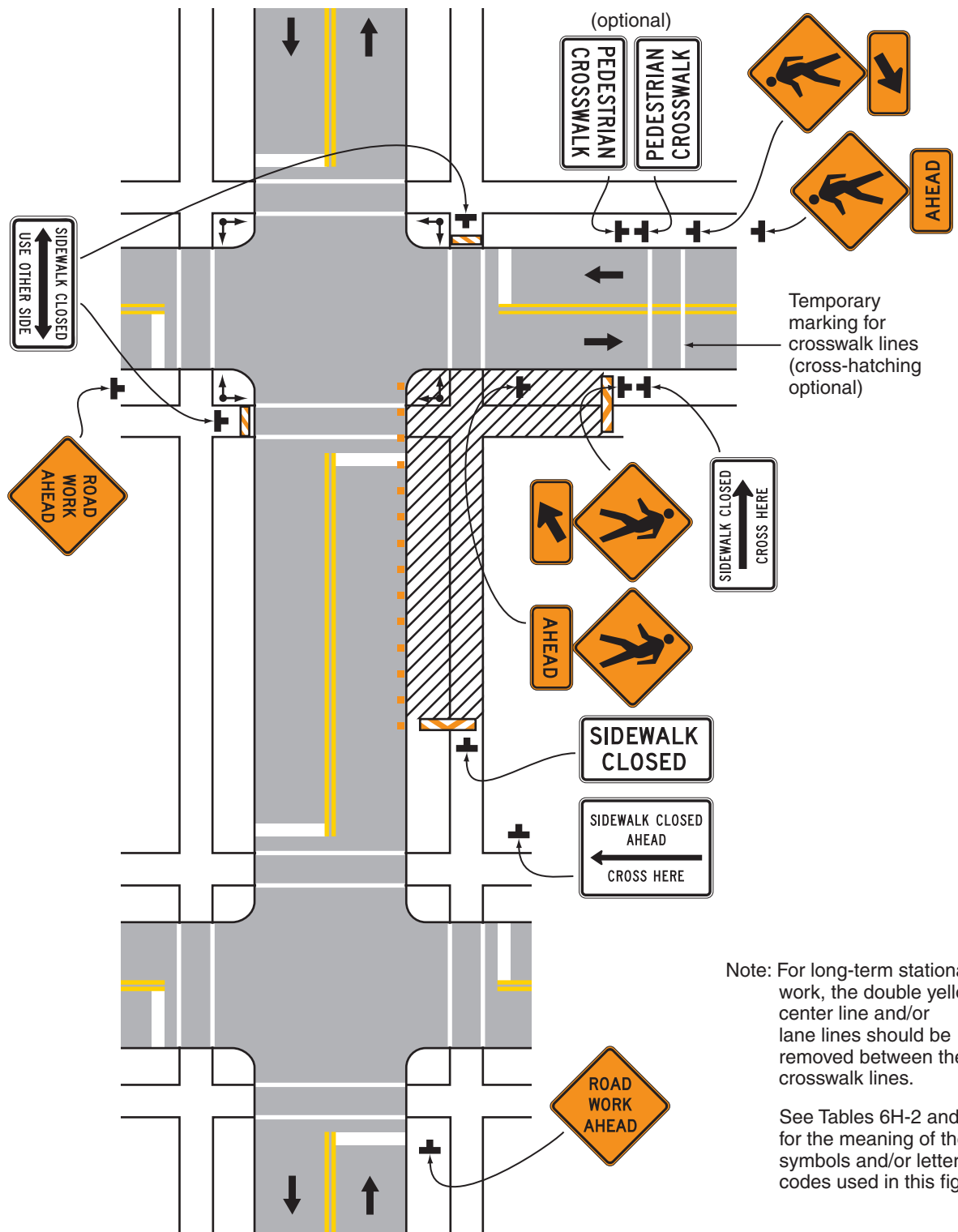
Sidewalk Diversion for work being done within the Right-of-Way

NOTES:

- ① Flashing or Steady Burn warning lights are necessary for overnight closures.
- ② Work area must be enclosed with barricades, fencing, or a combination of the two.
- ③ Temporary facilities shall be continuous, detectable and shall include accessibility features consistent with the features present in the existing pedestrian facility.
- ④ This form of Traffic Control shall be applicable only when there is enough room to maintain a minimum walkway of 36 inches.



MUTCD Figure 6H-29. Crosswalk Closures and Pedestrian Detours (TA-29)



Typical Application 29

Note: For long-term stationary work, the double yellow center line and/or lane lines should be removed between the crosswalk lines.

See Tables 6H-2 and 6H-3 for the meaning of the symbols and/or letter codes used in this figure.

City Streets w/ High Traffic Volumes

NOTE: Additional Traffic Control will be necessary when work is performed on these streets.
See Traffic Control plans for closures on two and four lane streets.

