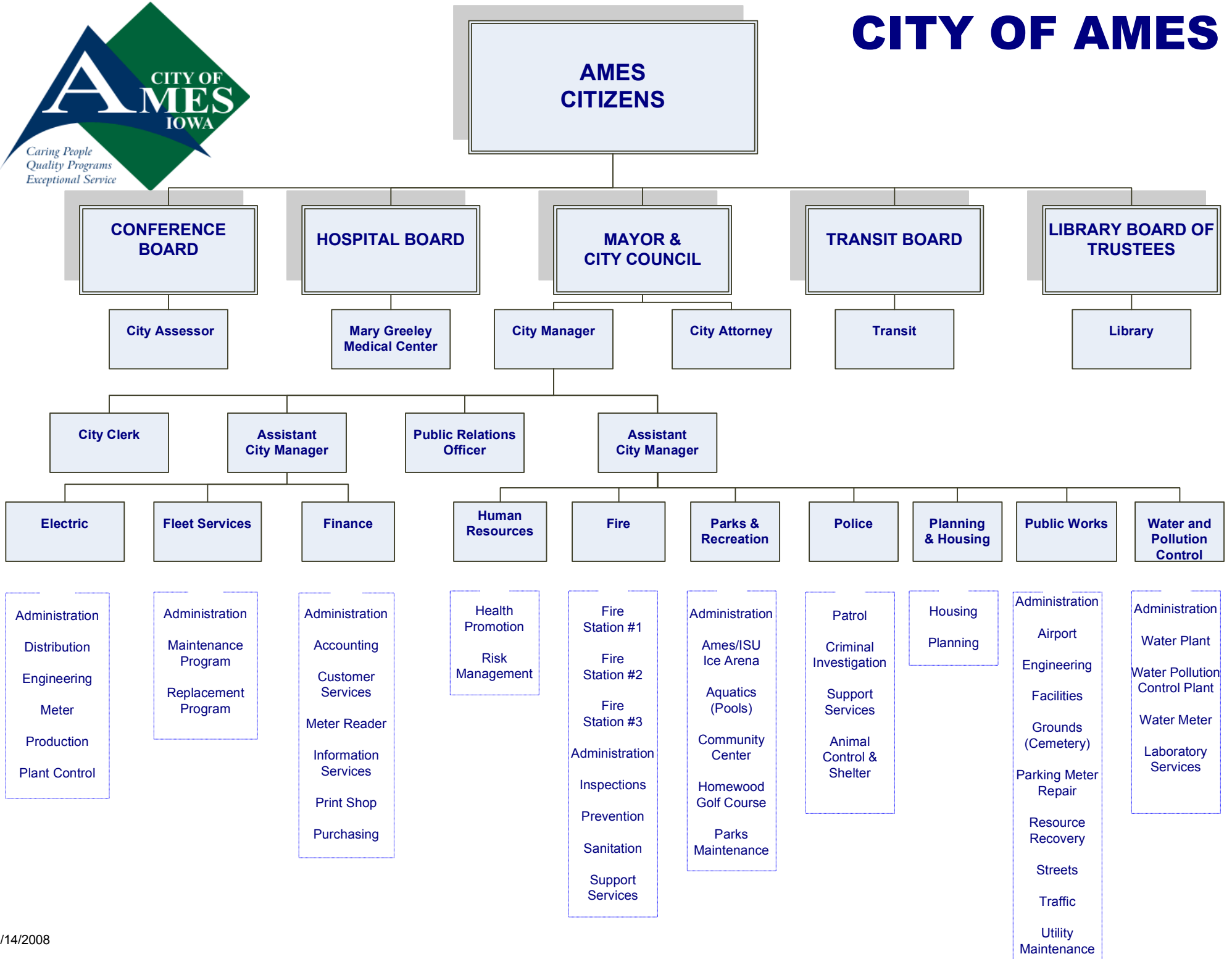


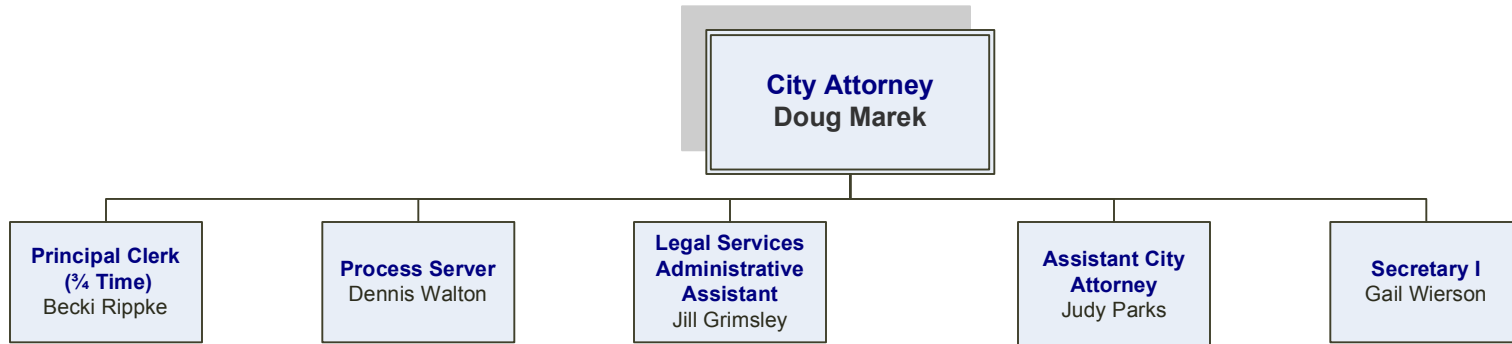


CITY OF AMES



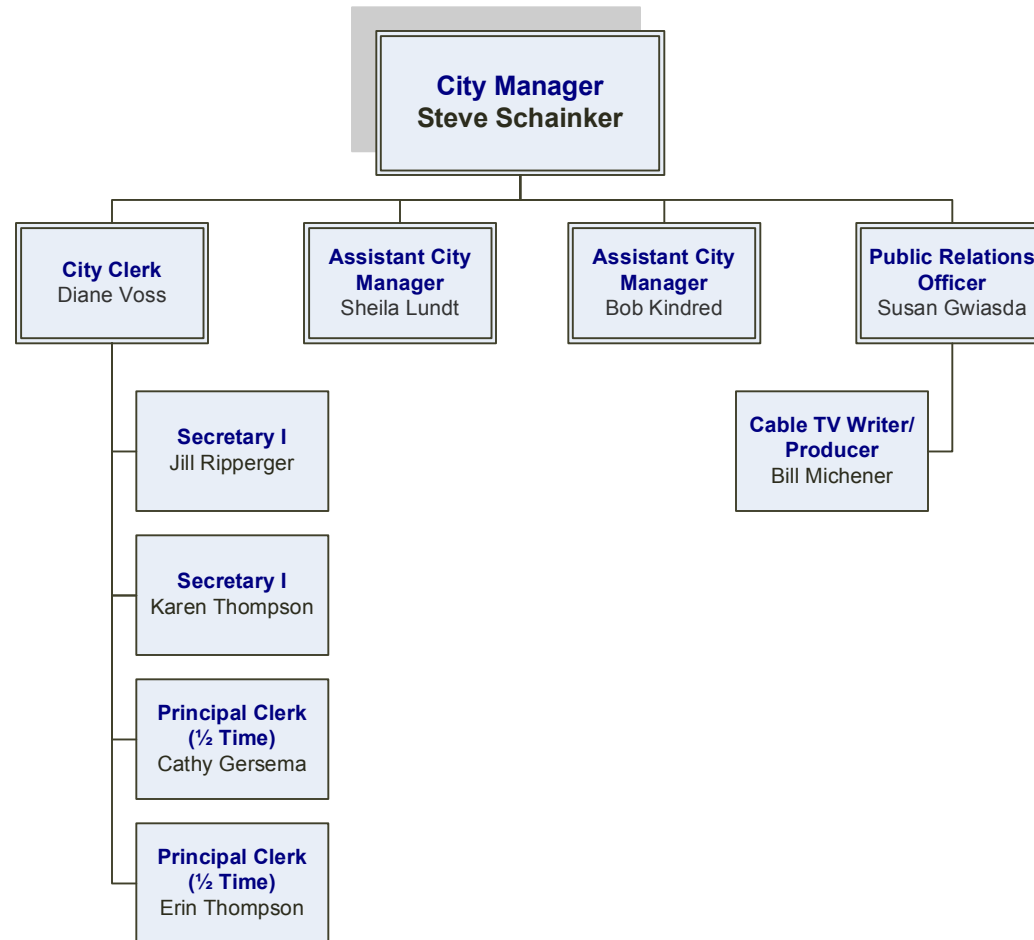


CITY ATTORNEY



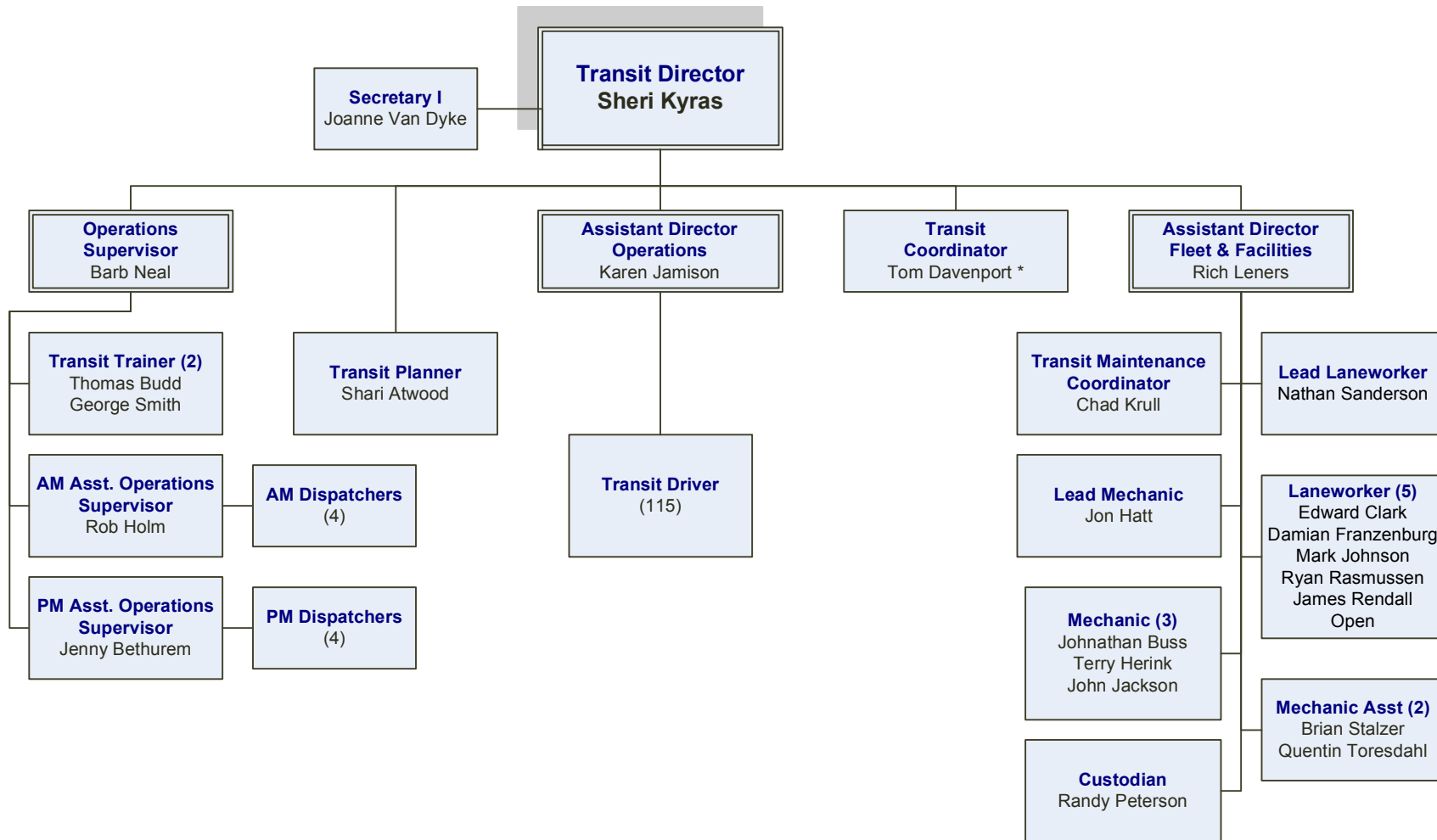


CITY MANAGER





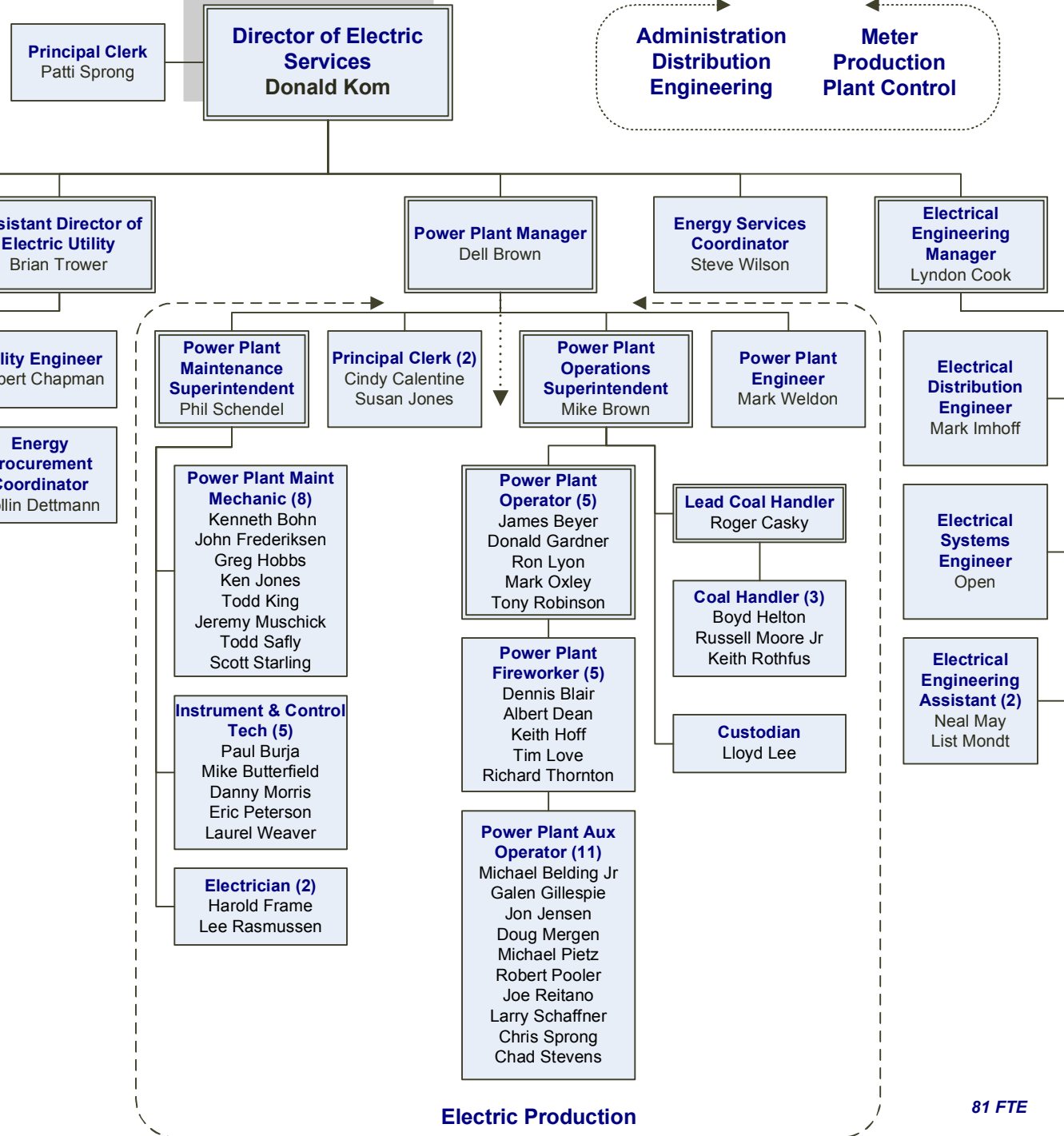
CY RIDE



*DBE Liaison Officer
& EEO Officer

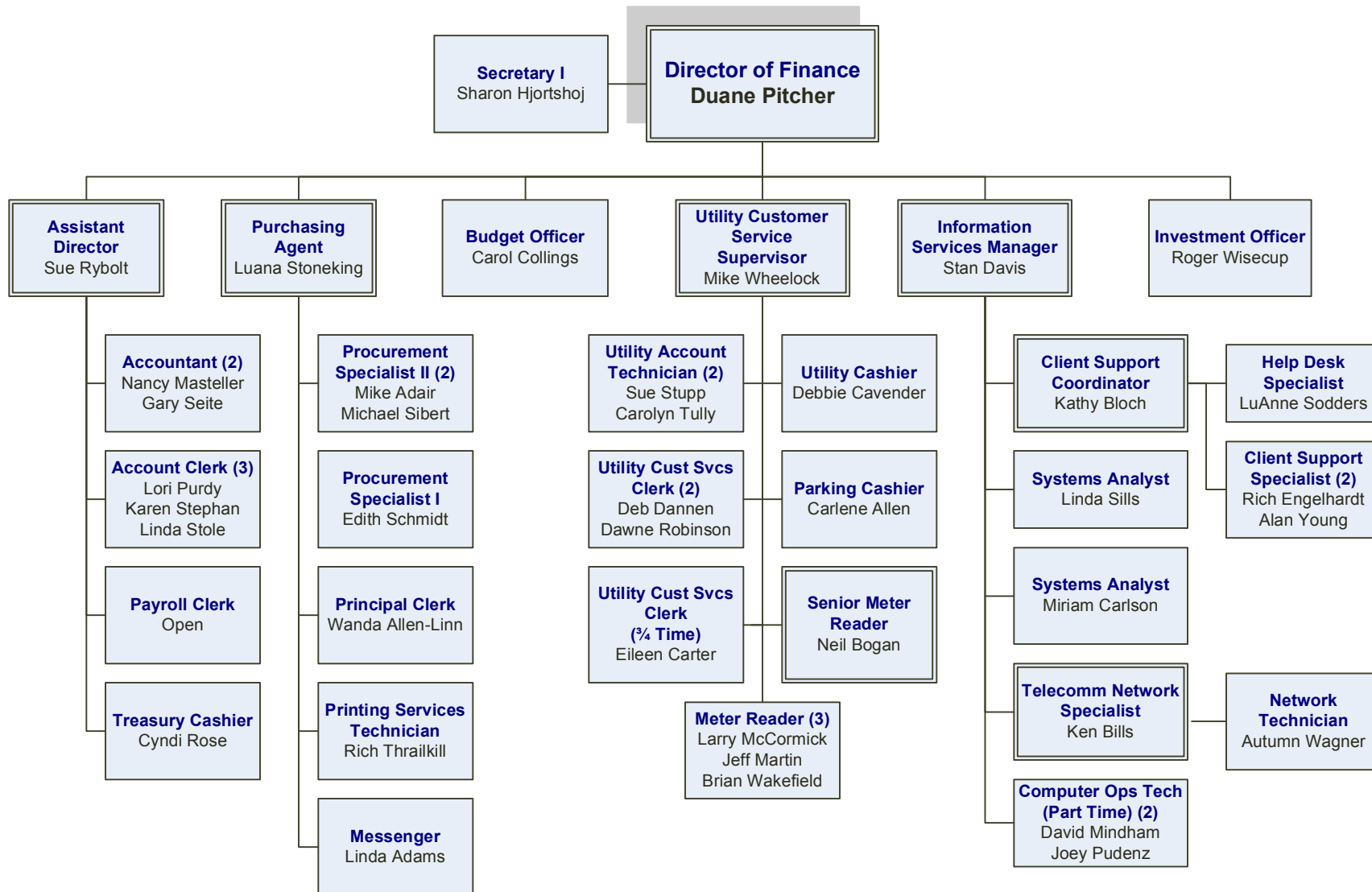


ELECTRIC SERVICES



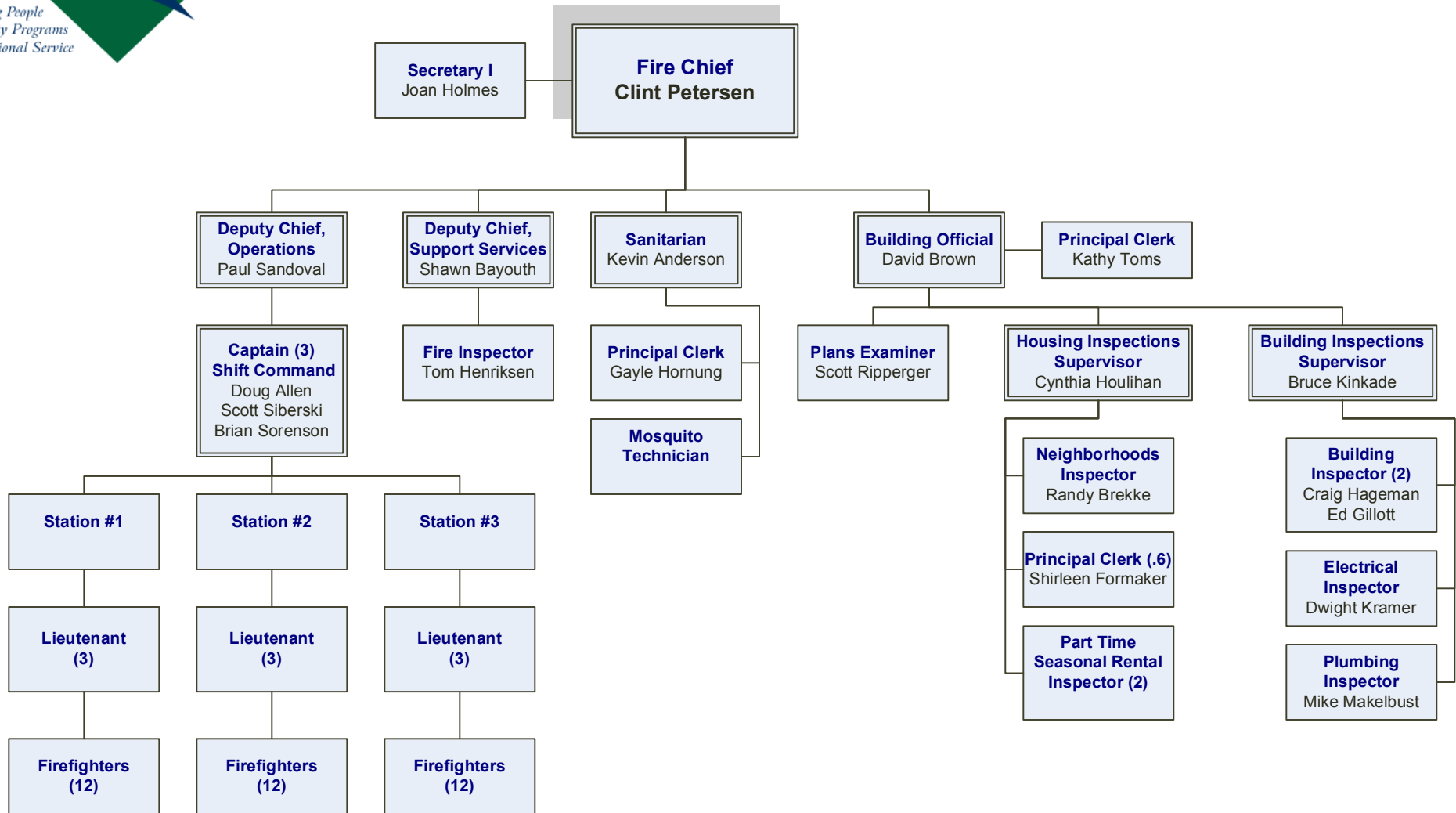


FINANCE



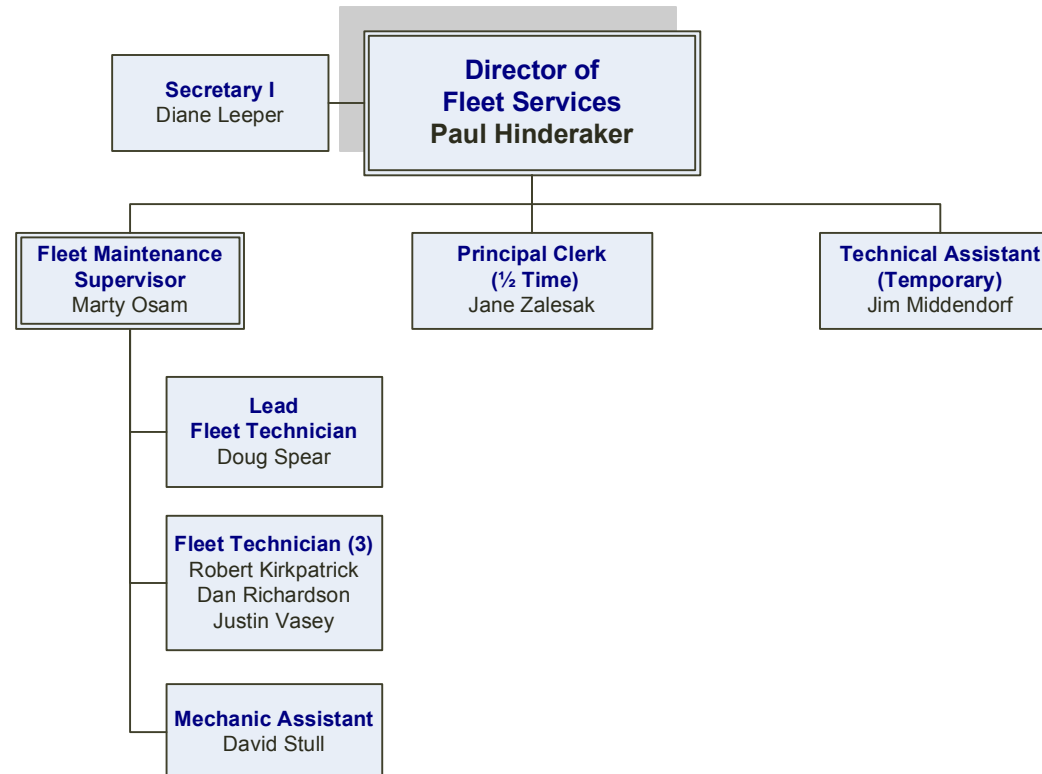


FIRE



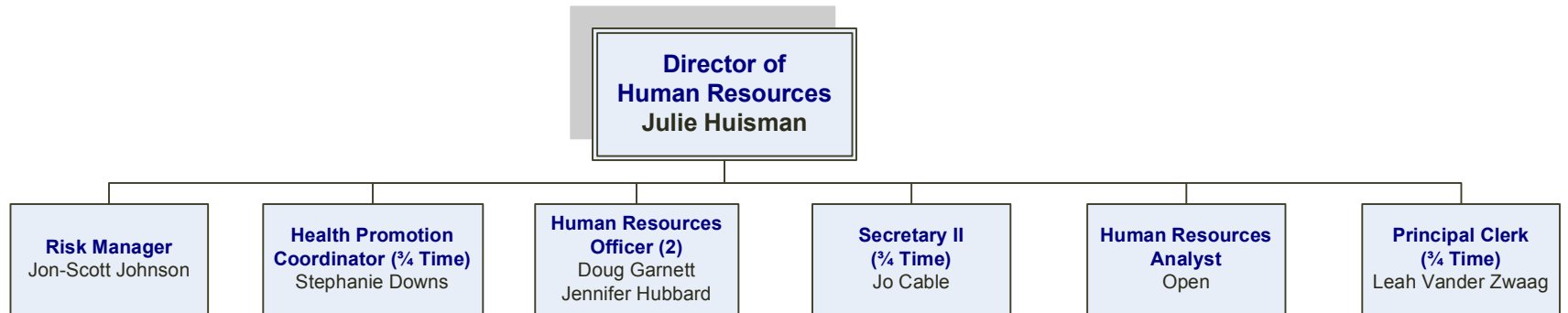


FLEET SERVICES





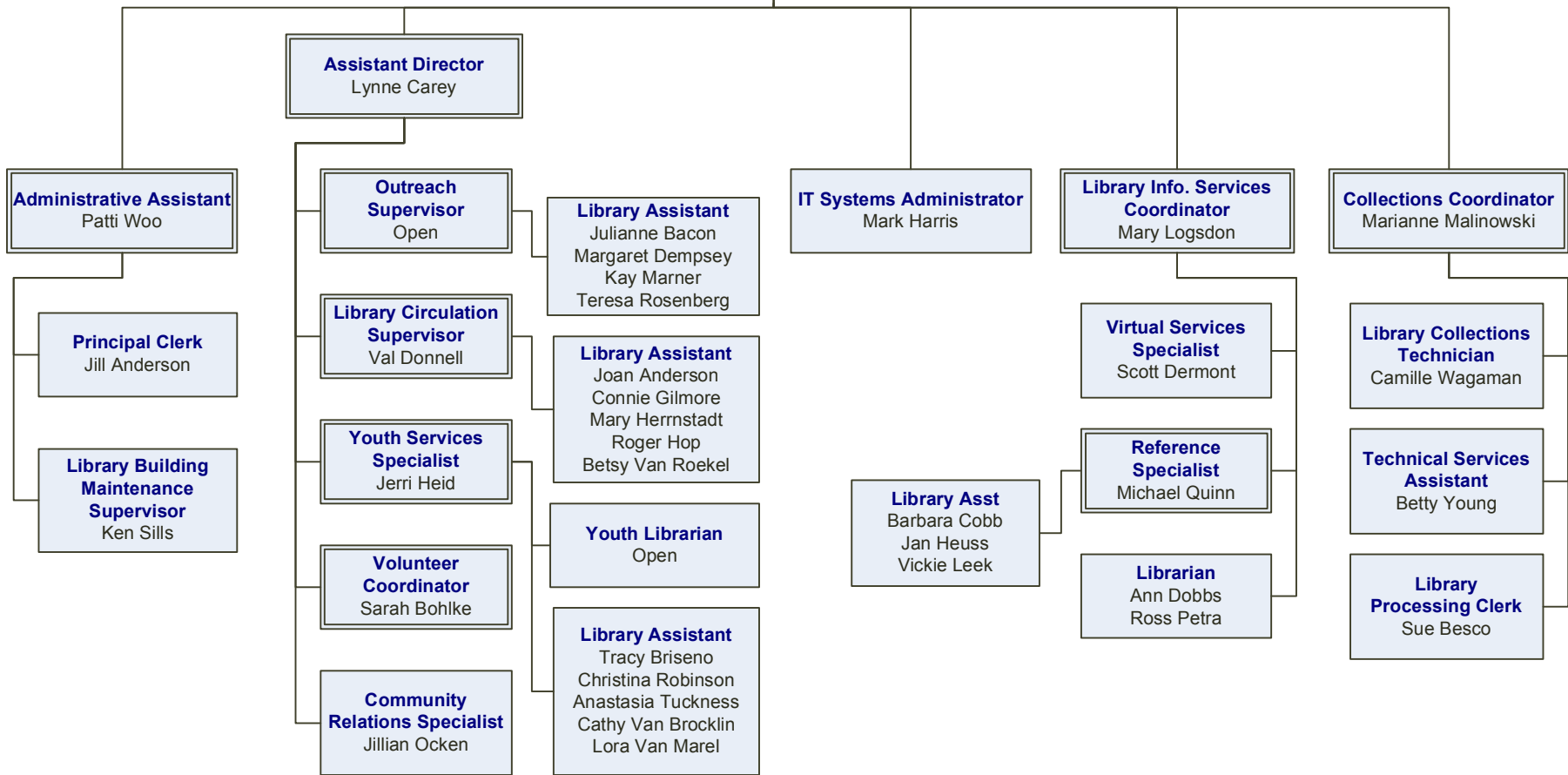
HUMAN RESOURCES





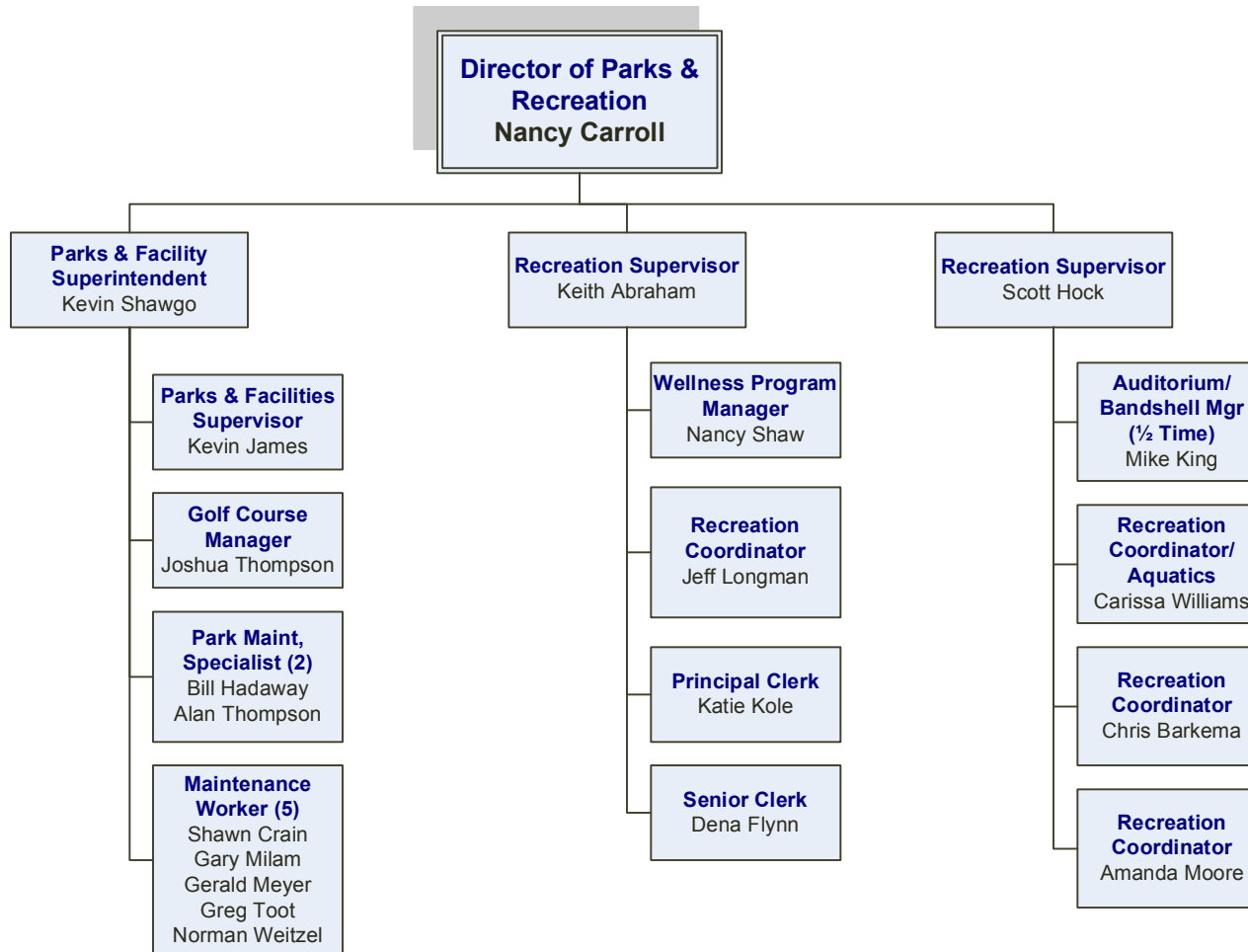
BOARD OF TRUSTEES

**Library Director
Art Weeks**



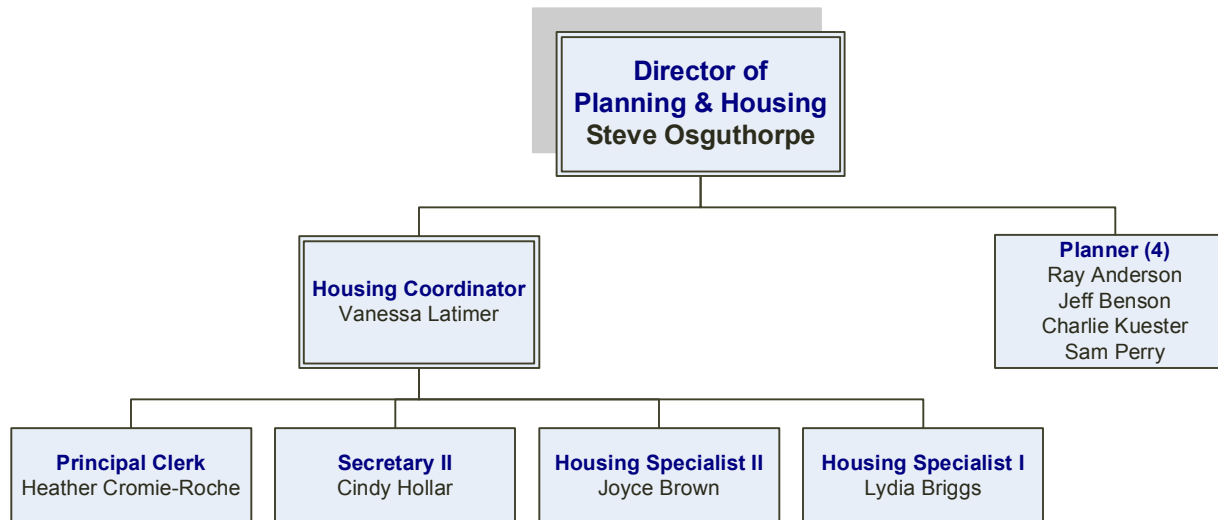


PARKS & RECREATION



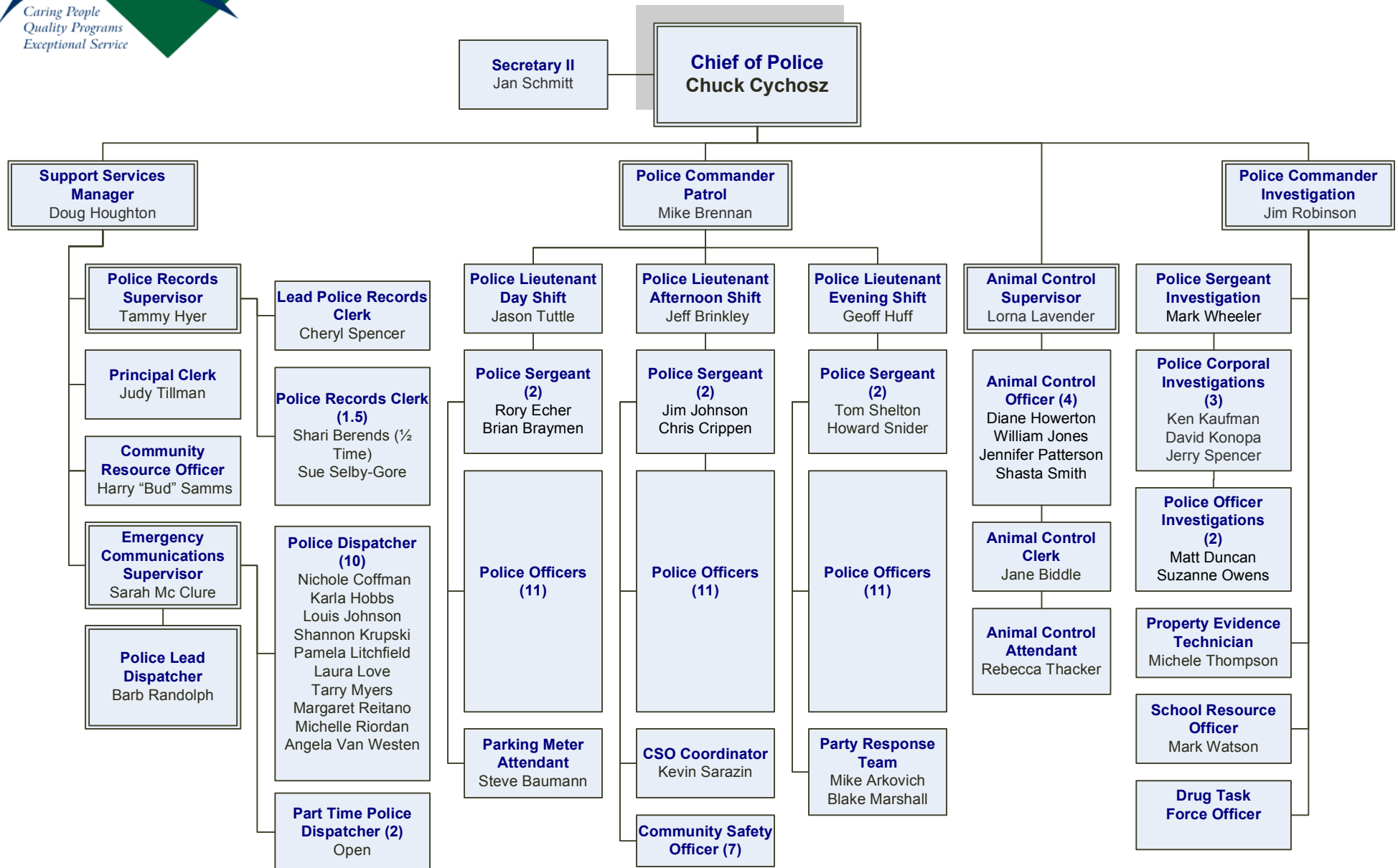


PLANNING & HOUSING



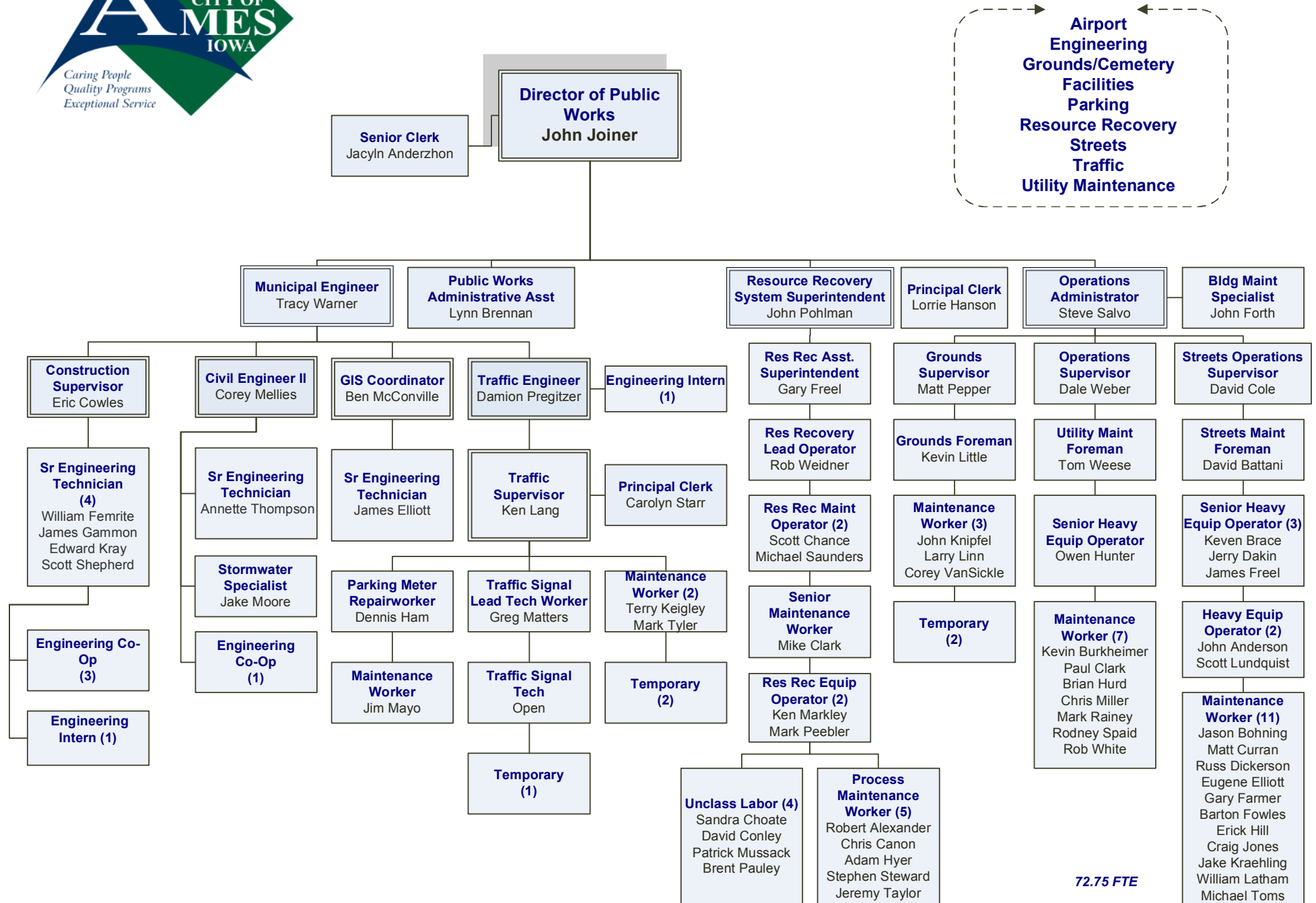


POLICE





PUBLIC WORKS



- Airport
- Engineering
- Grounds/Cemetery
- Facilities
- Parking
- Resource Recovery
- Streets
- Traffic
- Utility Maintenance

72.75 FTE



WATER & POLLUTION CONTROL

